

Product datasheet

Anti-Hck antibody [EP2415Y] ab75839

Recombinant RabMAb

[1 References](#) [1 Image](#)

Overview

| | |
|----------------------------|---|
| Product name | Anti-Hck antibody [EP2415Y] |
| Description | Rabbit monoclonal [EP2415Y] to Hck |
| Host species | Rabbit |
| Specificity | This protein is known to be similar in amino acid sequence to LCK (P06239), FYN (P06241), YES1 (P07947), SRC (P12931), and LYN (P07948). Therefore, cross-reactivity with these homologous proteins may be observed. We would be happy to provide immunogen alignment information upon request, please contact our Scientific Support for further information. |
| Tested applications | Suitable for: WB |
| Species reactivity | Reacts with: Human |
| Immunogen | Synthetic peptide. This information is proprietary to Abcam and/or its suppliers. |
| Positive control | WB: TF-1 and U-937 whole cell lysates. |
| General notes | <p>This product has switched from a hybridoma to recombinant production method on 13th September 2022.</p> <p>This product is a recombinant monoclonal antibody, which offers several advantages including:</p> <ul style="list-style-type: none">- High batch-to-batch consistency and reproducibility- Improved sensitivity and specificity- Long-term security of supply- Animal-free production <p>For more information see here.</p> <p>Our RabMAb[®] technology is a patented hybridoma-based technology for making rabbit monoclonal antibodies. For details on our patents, please refer to RabMAb[®] patents.</p> |

Properties

| | |
|-----------------------------|---|
| Form | Liquid |
| Storage instructions | Shipped at 4°C. Store at +4°C short term (1-2 weeks). Upon delivery aliquot. Store at -20°C long term. Avoid freeze / thaw cycle. |
| Storage buffer | pH: 7.20 Preservative: 0.01% Sodium azide Constituents: 59% PBS, 40% Glycerol (glycerin, glycerine), 0.05% BSA |

| | |
|---------------------|--------------------|
| Purity | Protein A purified |
| Clonality | Monoclonal |
| Clone number | EP2415Y |
| Isotype | IgG |

Applications

The Abpromise guarantee Our **Abpromise guarantee** covers the use of ab75839 in the following tested applications. The application notes include recommended starting dilutions; optimal dilutions/concentrations should be determined by the end user.

| Application | Abreviews | Notes |
|-------------|-----------|--|
| WB | | 1/20000. Predicted molecular weight: 59 kDa. |

Target

Function May serve as part of a signaling pathway coupling the Fc receptor to the activation of the respiratory burst. May also contribute to neutrophil migration and may regulate the degranulation process of neutrophils.

Tissue specificity Expressed predominantly in cells of the myeloid and B-lymphoid lineages.

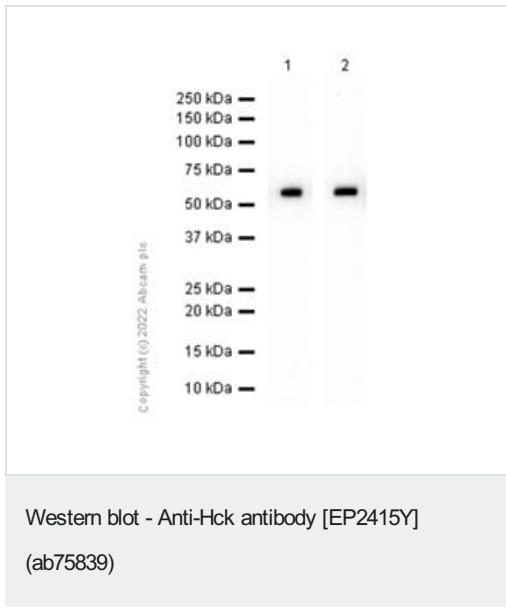
Sequence similarities Belongs to the protein kinase superfamily. Tyr protein kinase family. SRC subfamily. Contains 1 protein kinase domain. Contains 1 SH2 domain. Contains 1 SH3 domain.

Domain The SH3 domain mediates binding to HIV-1 Nef.

Cellular localization Membrane. Cytoplasm. At least half of this isoform is found in the cytoplasm, some of this fraction is myristoylated and Membrane. Membrane > caveola. 20% of this isoform is associated with caveolae, this association depends on palmitoylation of cyteine at position 3.

Form This protein is known to be similar in amino acid sequence to LCK (P06239), FYN (P06241), YES1 (P07947), SRC (P12931), and LYN (P07948). Therefore, cross-reactivity with these homologous proteins may be observed. We would be happy to provide immunogen alignment information upon request.

Images



All lanes : Anti-Hck antibody [EP2415Y] (ab75839) at 1/20000 dilution

Lane 1 : TF-1 (Human bone marrow erythroblast) whole cell lysate

Lane 2 : U-937 (Human histiocytic lymphoma monocyte) whole cell lysate

Lysates/proteins at 15 µg per lane.

Secondary

All lanes : Goat Anti-Rabbit IgG H&L (HRP) ([ab97051](#)) at 1/20000 dilution

Predicted band size: 59 kDa

Observed band size: 59 kDa

Blocking and diluting buffer and concentration: 5% NFD/MTBST.

Exposure time: 1 second (Lane 1); 3 seconds (Lane 2).

Please note: All products are "FOR RESEARCH USE ONLY. NOT FOR USE IN DIAGNOSTIC PROCEDURES"

Our Abpromise to you: Quality guaranteed and expert technical support

- Replacement or refund for products not performing as stated on the datasheet
- Valid for 12 months from date of delivery
- Response to your inquiry within 24 hours
- We provide support in Chinese, English, French, German, Japanese and Spanish
- Extensive multi-media technical resources to help you
- We investigate all quality concerns to ensure our products perform to the highest standards

If the product does not perform as described on this datasheet, we will offer a refund or replacement. For full details of the Abpromise, please visit <https://www.abcam.com/abpromise> or contact our technical team.

Terms and conditions

- Guarantee only valid for products bought direct from Abcam or one of our authorized distributors