



Product datasheet

Anti-HCV subtype 1b NS5B antibody [10D6] ab100895

★★★★★ [2 Abreviews](#) [2 References](#) [2 Images](#)

Overview

Product name	Anti-HCV subtype 1b NS5B antibody [10D6]
Description	Mouse monoclonal [10D6] to HCV subtype 1b NS5B
Host species	Mouse
Tested applications	Suitable for: WB, IP, ELISA
Species reactivity	Reacts with: Hepatitis C virus
Immunogen	Recombinant fragment: LSSKAVNHIRSVWKDLEDT , corresponding to amino acids 111-130 of HCV subtype 1b NS5B  Run BLAST with  Run BLAST with
Positive control	Huh7 cells harboring selectable subgenomic HCV RNA replicon
General notes	<p>The Life Science industry has been in the grips of a reproducibility crisis for a number of years. Abcam is leading the way in addressing this with our range of recombinant monoclonal antibodies and knockout edited cell lines for gold-standard validation. Please check that this product meets your needs before purchasing.</p> <p>If you have any questions, special requirements or concerns, please send us an inquiry and/or contact our Support team ahead of purchase. Recommended alternatives for this product can be found below, along with publications, customer reviews and Q&As</p>

Properties

Form	Liquid
Storage instructions	Shipped at 4°C. Upon delivery aliquot and store at -20°C. Avoid freeze / thaw cycles.
Storage buffer	pH: 7.40 Preservative: 0.1% Sodium azide Constituent: PBS
Purity	Protein G purified
Clonality	Monoclonal
Clone number	10D6
Isotype	IgG1

Applications

The Abpromise guarantee

Our **Abpromise guarantee** covers the use of ab100895 in the following tested applications.

The application notes include recommended starting dilutions; optimal dilutions/concentrations should be determined by the end user.

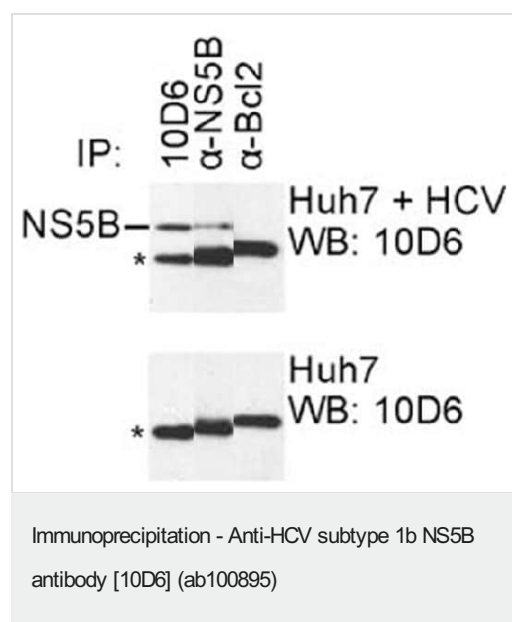
Application	Abreviews	Notes
WB	★★★★★ (2)	1/1000. Predicted molecular weight: 65 kDa.
IP		Use at an assay dependent dilution.
ELISA		1/1000.

Target

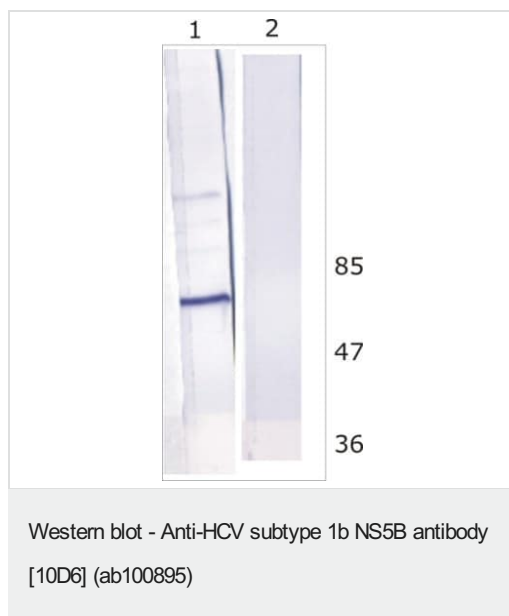
Cellular localization

Host cytoplasm, nucleus, mitochondrion, endoplasmatic reticulum; secreted.

Images



IP was carried out with ab100895 using the lysates of Huh7 cells harboring selectable subgenomic HCV RNA replicon (upper panel) or plain Huh7 cells (lower panel). NS5B polyclonal antibodies (-NS5B) and -Bcl2 mAb, directed against cellular protein, were used as positive and negative controls respectively. Asterisk indicates immunoglobulin heavy chain; protein blots were probed with ab100895.



All lanes : Anti-HCV subtype 1b NS5B antibody [10D6] (ab100895)

Lane 1 : Huh-7 transfected with HCV replicon

Lane 2 : Huh-7 nontransfected cells

Predicted band size: 65 kDa

Please note: All products are "FOR RESEARCH USE ONLY. NOT FOR USE IN DIAGNOSTIC PROCEDURES"

Our Abpromise to you: Quality guaranteed and expert technical support

- Replacement or refund for products not performing as stated on the datasheet
- Valid for 12 months from date of delivery
- Response to your inquiry within 24 hours
- We provide support in Chinese, English, French, German, Japanese and Spanish
- Extensive multi-media technical resources to help you
- We investigate all quality concerns to ensure our products perform to the highest standards

If the product does not perform as described on this datasheet, we will offer a refund or replacement. For full details of the Abpromise, please visit <https://www.abcam.com/abpromise> or contact our technical team.

Terms and conditions

- Guarantee only valid for products bought direct from Abcam or one of our authorized distributors