

Anti-Heme Oxygenase 1 antibody ab82585

[4 References](#) [1 Image](#)

Overview

Product name	Anti-Heme Oxygenase 1 antibody
Description	Rabbit polyclonal to Heme Oxygenase 1
Host species	Rabbit
Tested applications	Suitable for: WB
Species reactivity	Reacts with: Mouse, Rat, Dog, Human
Immunogen	Synthetic peptide from the N terminal of Human Heme Oxygenase 1
General notes	<p>The Life Science industry has been in the grips of a reproducibility crisis for a number of years. Abcam is leading the way in addressing this with our range of recombinant monoclonal antibodies and knockout edited cell lines for gold-standard validation. Please check that this product meets your needs before purchasing.</p> <p>If you have any questions, special requirements or concerns, please send us an inquiry and/or contact our Support team ahead of purchase. Recommended alternatives for this product can be found below, along with publications, customer reviews and Q&As</p>

Properties

Form	Liquid
Storage instructions	Shipped at 4°C. Upon delivery aliquot and store at -20°C. Avoid freeze / thaw cycles.
Storage buffer	Preservative: 0.09% Sodium azide Constituents: 50% Glycerol (glycerin, glycerine), PBS
Purity	Protein A purified
Clonality	Polyclonal
Isotype	IgG

Applications

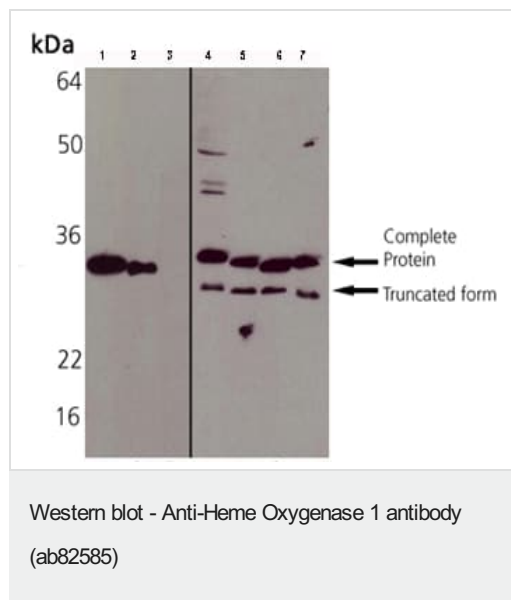
The Abpromise guarantee Our **Abpromise guarantee** covers the use of ab82585 in the following tested applications. The application notes include recommended starting dilutions; optimal dilutions/concentrations should be determined by the end user.

Application	Abreviews	Notes
WB		1/1000. Detects a band of approximately 33 kDa (predicted molecular weight: 33 kDa).

Target

Function	Heme oxygenase cleaves the heme ring at the alpha methene bridge to form biliverdin. Biliverdin is subsequently converted to bilirubin by biliverdin reductase. Under physiological conditions, the activity of heme oxygenase is highest in the spleen, where senescent erythrocytes are sequestered and destroyed.
Sequence similarities	Belongs to the heme oxygenase family.
Cellular localization	Microsome. Endoplasmic reticulum.

Images



All lanes : Anti-Heme Oxygenase 1 antibody (ab82585) at 1/1000 dilution

Lane 1 : Heme Oxygenase 1 Recombinant Rat Protein

Lane 2 : Heme Oxygenase 1 Recombinant Human Protein

Lane 3 : Heme Oxygenase 2 Recombinant Human Protein

Lane 4 : Dog Liver Microsome Extract

Lane 5 : Mouse Liver Microsome Extract

Lane 6 : Rat Liver Microsome Extract

Lane 7 : Human Liver Microsome Extract

Developed using the ECL technique.

Predicted band size: 33 kDa

Observed band size: 33 kDa

Please note: All products are "FOR RESEARCH USE ONLY. NOT FOR USE IN DIAGNOSTIC PROCEDURES"

Our Abpromise to you: Quality guaranteed and expert technical support

- Replacement or refund for products not performing as stated on the datasheet
- Valid for 12 months from date of delivery
- Response to your inquiry within 24 hours
- We provide support in Chinese, English, French, German, Japanese and Spanish
- Extensive multi-media technical resources to help you

- We investigate all quality concerns to ensure our products perform to the highest standards

If the product does not perform as described on this datasheet, we will offer a refund or replacement. For full details of the Abpromise, please visit <https://www.abcam.com/abpromise> or contact our technical team.

Terms and conditions

- Guarantee only valid for products bought direct from Abcam or one of our authorized distributors