


# Anti-Hemoglobin subunit beta antibody ab227552

3 Images

## Overview

<b>Product name</b>	Anti-Hemoglobin subunit beta antibody
<b>Description</b>	Rabbit polyclonal to Hemoglobin subunit beta
<b>Host species</b>	Rabbit
<b>Tested applications</b>	<b>Suitable for:</b> WB
<b>Species reactivity</b>	<b>Reacts with:</b> Mouse, Rat, Human <b>Predicted to work with:</b> Rhesus monkey 
<b>Immunogen</b>	Recombinant full length protein corresponding to Human Hemoglobin subunit beta. Database link: <a href="#">P68871</a>
<b>Positive control</b>	WB: Rat spleen extract; Human plasma extract; Untreated and Complete Freund's adjuvant treated mouse leukocyte extracts.
<b>General notes</b>	<p>The Life Science industry has been in the grips of a reproducibility crisis for a number of years. Abcam is leading the way in addressing this with our range of recombinant monoclonal antibodies and knockout edited cell lines for gold-standard validation. Please check that this product meets your needs before purchasing.</p> <p>If you have any questions, special requirements or concerns, please send us an inquiry and/or contact our Support team ahead of purchase. Recommended alternatives for this product can be found below, along with publications, customer reviews and Q&amp;As</p>

## Properties

<b>Form</b>	Liquid
<b>Storage instructions</b>	Shipped at 4°C. Store at +4°C short term (1-2 weeks). Upon delivery aliquot. Store at -20°C long term. Avoid freeze / thaw cycle.
<b>Storage buffer</b>	pH: 7.00 Preservative: 0.01% Thimerosal (merthiolate) Constituents: 78.99% PBS, 1% BSA, 20% Glycerol (glycerin, glycerine)
<b>Purity</b>	Immunogen affinity purified
<b>Clonality</b>	Polyclonal
<b>Isotype</b>	IgG

## Applications

### The Abpromise guarantee

Our **Abpromise guarantee** covers the use of ab227552 in the following tested applications.

The application notes include recommended starting dilutions; optimal dilutions/concentrations should be determined by the end user.

Application	Abreviews	Notes
WB		1/500 - 1/3000. Predicted molecular weight: 16 kDa.

## Target

### Function

Involved in oxygen transport from the lung to the various peripheral tissues.  
LVV-hemorphin-7 potentiates the activity of bradykinin, causing a decrease in blood pressure.  
Spinorphin: functions as an endogenous inhibitor of enkephalin-degrading enzymes such as DPP3, and as a selective antagonist of the P2RX3 receptor which is involved in pain signaling, these properties implicate it as a regulator of pain and inflammation.

### Tissue specificity

Red blood cells.

### Involvement in disease

Heinz body anemias  
Beta-thalassemia  
Sickle cell anemia  
Beta-thalassemia, dominant, inclusion body type

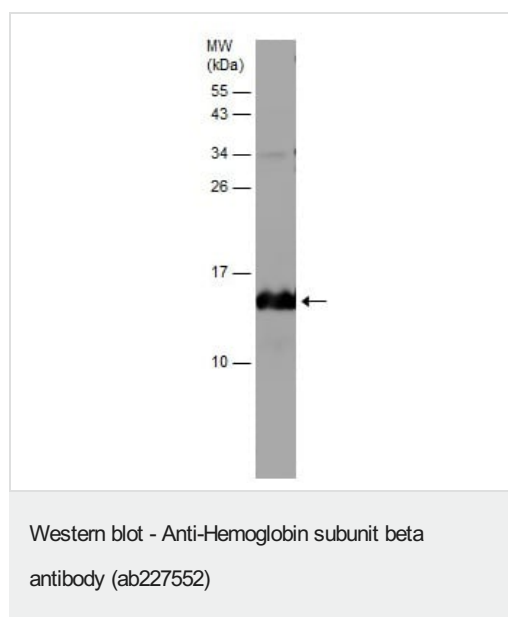
### Sequence similarities

Belongs to the globin family.

### Post-translational modifications

Glucose reacts non-enzymatically with the N-terminus of the beta chain to form a stable ketoamine linkage. This takes place slowly and continuously throughout the 120-day life span of the red blood cell. The rate of glycation is increased in patients with diabetes mellitus.  
S-nitrosylated; a nitric oxide group is first bound to Fe(2+) and then transferred to Cys-94 to allow capture of O(2).  
Acetylated on Lys-60, Lys-83 and Lys-145 upon aspirin exposure.

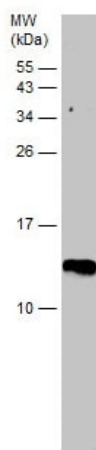
## Images



Anti-Hemoglobin subunit beta antibody (ab227552) at 1/500 dilution + Rat spleen extract at 50 µg

**Predicted band size:** 16 kDa

15% SDS-PAGE gel.

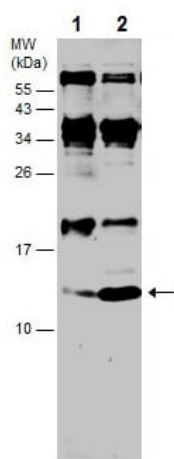


Western blot - Anti-Hemoglobin subunit beta antibody (ab227552)

Anti-Hemoglobin subunit beta antibody (ab227552) at 1/500 dilution + Human plasma extract at 30 µg

**Predicted band size:** 16 kDa

15% SDS-PAGE gel.



Western blot - Anti-Hemoglobin subunit beta antibody (ab227552)

**All lanes :** Anti-Hemoglobin subunit beta antibody (ab227552) at 1/500 dilution

**Lane 1 :** Untreated mouse leukocyte extract

**Lane 2 :** Complete Freund's adjuvant treated mouse leukocyte extract

Lysates/proteins at 30 µg per lane.

**Predicted band size:** 16 kDa

15% SDS-PAGE gel.

**Please note:** All products are "FOR RESEARCH USE ONLY. NOT FOR USE IN DIAGNOSTIC PROCEDURES"

### Our Abpromise to you: Quality guaranteed and expert technical support

- Replacement or refund for products not performing as stated on the datasheet
- Valid for 12 months from date of delivery
- Response to your inquiry within 24 hours
- We provide support in Chinese, English, French, German, Japanese and Spanish
- Extensive multi-media technical resources to help you
- We investigate all quality concerns to ensure our products perform to the highest standards

If the product does not perform as described on this datasheet, we will offer a refund or replacement. For full details of the Abpromise, please visit <https://www.abcam.com/abpromise> or contact our technical team.

## Terms and conditions

---

- Guarantee only valid for products bought direct from Abcam or one of our authorized distributors