

## Product datasheet

# Anti-Hemoglobin subunit beta/ba1 + Hemoglobin subunit delta antibody [EPR8322(B)] ab131225

Recombinant RabMAb

[1 References](#) [5 Images](#)

### Overview

<b>Product name</b>	Anti-Hemoglobin subunit beta/ba1 + Hemoglobin subunit delta antibody [EPR8322(B)]
<b>Description</b>	Rabbit monoclonal [EPR8322(B)] to Hemoglobin subunit beta/ba1 + Hemoglobin subunit delta
<b>Host species</b>	Rabbit
<b>Tested applications</b>	<b>Suitable for:</b> WB, IHC-P <b>Unsuitable for:</b> IP
<b>Species reactivity</b>	<b>Reacts with:</b> Human
<b>Immunogen</b>	Synthetic peptide within Human Hemoglobin subunit delta aa 1-100. The exact sequence is proprietary.
<b>Positive control</b>	Human fetal heart, fetal liver, and red blood cell (RBC) lysates; Human endometrium and spleen tissues.
<b>General notes</b>	<p>This product is a recombinant monoclonal antibody, which offers several advantages including:</p> <ul style="list-style-type: none"><li>- High batch-to-batch consistency and reproducibility</li><li>- Improved sensitivity and specificity</li><li>- Long-term security of supply</li><li>- Animal-free production</li></ul> <p>For more information <a href="#">see here</a>.</p> <p>Our RabMAb<sup>®</sup> technology is a patented hybridoma-based technology for making rabbit monoclonal antibodies. For details on our patents, please refer to <a href="#">RabMAb<sup>®</sup> patents</a>.</p> <p>Mouse, Rat: We have preliminary internal testing data to indicate this antibody may not react with these species. Please contact us for more information.</p>

### Properties

<b>Form</b>	Liquid
<b>Storage instructions</b>	Shipped at 4°C. Store at -20°C. Stable for 12 months at -20°C.
<b>Storage buffer</b>	pH: 7.20 Preservative: 0.01% Sodium azide Constituents: 9% PBS, 40% Glycerol (glycerin, glycerine), 0.05% BSA, 50% Tissue culture

	supernatant
<b>Purity</b>	Protein A purified
<b>Clonality</b>	Monoclonal
<b>Clone number</b>	EPR8322(B)
<b>Isotype</b>	IgG

## Applications

**The Abpromise guarantee** Our **Abpromise guarantee** covers the use of ab131225 in the following tested applications. The application notes include recommended starting dilutions; optimal dilutions/concentrations should be determined by the end user.

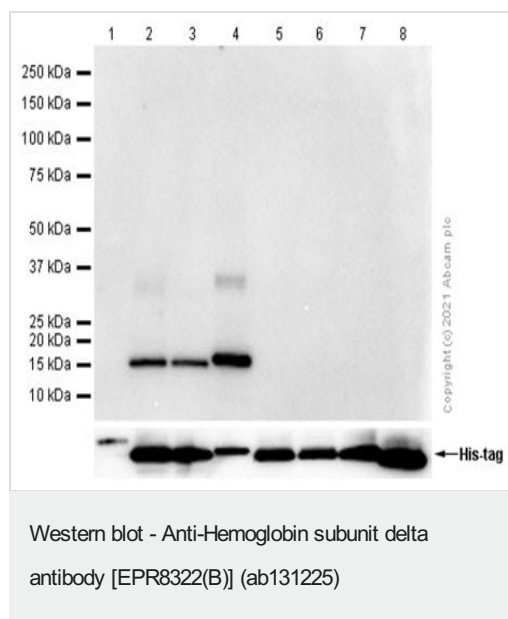
Application	Abreviews	Notes
<b>WB</b>		1/200 - 1/10000. Detects a band of approximately 16 kDa (predicted molecular weight: 16 kDa).
<b>IHC-P</b>		1/250 - 1/500. Perform heat mediated antigen retrieval with citrate buffer pH 6 before commencing with IHC staining protocol.

**Application notes** Is unsuitable for IP.

## Target

**Cellular localization** Hemoglobin subunit beta/ba1: Haemoglobin complex, red blood cells.

## Images



**All lanes** : Anti-Hemoglobin subunit beta/ba1 + Hemoglobin subunit delta antibody [EPR8322(B)] (ab131225) at 1/200 dilution

**Lane 1** : Recombinant Human Hemoglobin subunit alpha protein (denatured) (**ab131697**)

**Lane 2** : His-tagged human Hemoglobin subunit beta/ba1 (aa 3-147) recombinant protein

**Lane 3** : His-tagged human Hemoglobin subunit delta (aa 3-147) recombinant protein

**Lane 4** : His-tagged full length human Hemoglobin subunit delta recombinant protein

**Lane 5** : His-tagged human Hemoglobin subunit epsilon (aa 3-147) recombinant protein

**Lane 6** : His-tagged human Hemoglobin subunit gamma-2 (aa 2-147) recombinant protein

**Lane 7** : His-tagged human Hemoglobin subunit gamma-1 (aa 2-147) recombinant protein

**Lane 8** : Recombinant Human Hemoglobin subunit zeta protein  
([ab95347](#))

Lysates/proteins at 0.1 µg per lane.

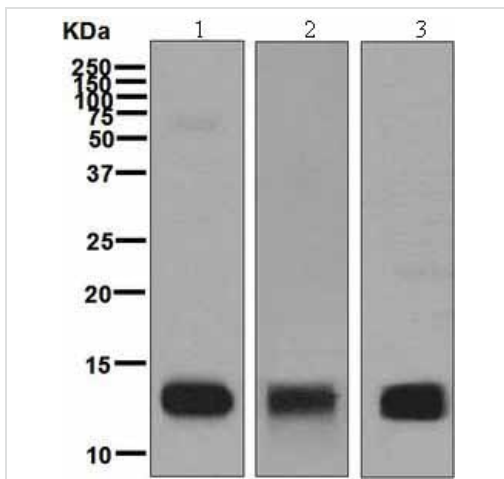
**Secondary**

**All lanes** : Goat Anti-Rabbit IgG H&L (HRP) ([ab97051](#)) at 1/20000 dilution (Goat Anti-Rabbit IgG, (H+L), Peroxidase conjugated)

**Predicted band size:** 16 kDa

Blocking/Diluting buffer and concentration: 5% NFDN/TBST

Exposure time: 100 seconds



Western blot - Anti-Hemoglobin subunit delta antibody [EPR8322(B)] ([ab131225](#))

**All lanes** : Anti-Hemoglobin subunit beta/ba1 + Hemoglobin subunit delta antibody [EPR8322(B)] ([ab131225](#)) at 1/1000 dilution

**Lane 1** : Human fetal heart tissue lysate

**Lane 2** : Human fetal liver tissue lysate

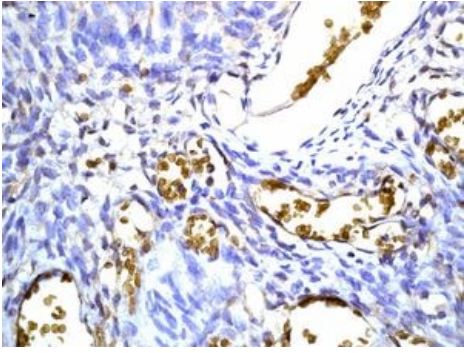
**Lane 3** : Human red blood cell (RBC) lysate

Lysates/proteins at 10 µg per lane.

**Secondary**

**All lanes** : Goat anti-Rabbit HRP at 1/2000 dilution

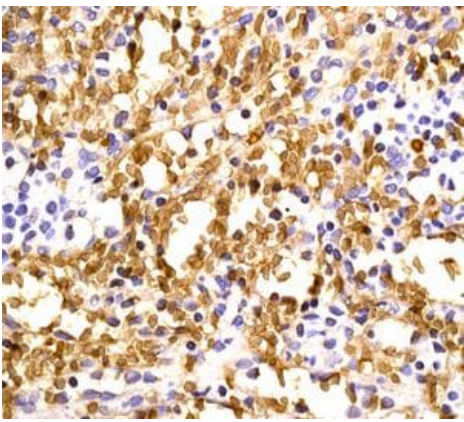
**Predicted band size:** 16 kDa



Immunohistochemistry (Formalin/PFA-fixed paraffin-embedded sections) - Anti-Hemoglobin subunit delta antibody [EPR8322(B)] (ab131225)

Immunohistochemical analysis of paraffin embedded Human endometrium tissue labelling Hemoglobin subunit delta with ab131225 at 1/250 dilution.

Perform heat mediated antigen retrieval with citrate buffer pH 6 before commencing with IHC staining protocol.



Immunohistochemistry (Formalin/PFA-fixed paraffin-embedded sections) - Anti-Hemoglobin subunit delta antibody [EPR8322(B)] (ab131225)

Immunohistochemical analysis of paraffin embedded Human spleen tissue labelling Hemoglobin subunit delta with ab131225 at 1/250 dilution.

Perform heat mediated antigen retrieval with citrate buffer pH 6 before commencing with IHC staining protocol.

### Why choose a recombinant antibody?



**Research with confidence**  
Consistent and reproducible results



**Long-term and scalable supply**  
Recombinant technology



**Success from the first experiment**  
Confirmed specificity



**Ethical standards compliant**  
Animal-free production

Anti-Hemoglobin subunit delta antibody [EPR8322(B)] (ab131225)

**Please note:** All products are "FOR RESEARCH USE ONLY. NOT FOR USE IN DIAGNOSTIC PROCEDURES"

## **Our Abpromise to you: Quality guaranteed and expert technical support**

---

- Replacement or refund for products not performing as stated on the datasheet
- Valid for 12 months from date of delivery
- Response to your inquiry within 24 hours
  
- We provide support in Chinese, English, French, German, Japanese and Spanish
- Extensive multi-media technical resources to help you
- We investigate all quality concerns to ensure our products perform to the highest standards

If the product does not perform as described on this datasheet, we will offer a refund or replacement. For full details of the Abpromise, please visit <https://www.abcam.com/abpromise> or contact our technical team.

## **Terms and conditions**

---

- Guarantee only valid for products bought direct from Abcam or one of our authorized distributors