

## Product datasheet

### Anti-Hemopexin antibody [EPR5609] ab133523

Recombinant RabMAb

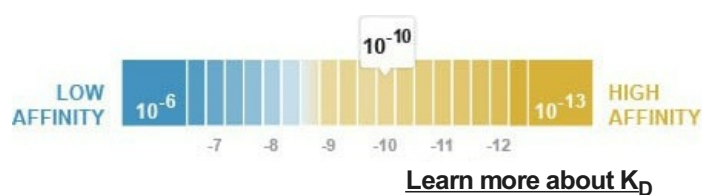
3 Images

#### Overview

Product name	Anti-Hemopexin antibody [EPR5609]
Description	Rabbit monoclonal [EPR5609] to Hemopexin
Host species	Rabbit
Tested applications	<b>Suitable for:</b> WB <b>Unsuitable for:</b> ICC/IF or IHC-P
Species reactivity	<b>Reacts with:</b> Human
Immunogen	Synthetic peptide. This information is proprietary to Abcam and/or its suppliers.
Positive control	Human plasma and placenta, fetal liver, and Human thyroid lysates.
General notes	<p>This product is a recombinant monoclonal antibody, which offers several advantages including:</p> <ul style="list-style-type: none"> <li>- High batch-to-batch consistency and reproducibility</li> <li>- Improved sensitivity and specificity</li> <li>- Long-term security of supply</li> <li>- Animal-free production</li> </ul> <p>For more information <a href="#">see here</a>.</p> <p>Our RabMAb<sup>®</sup> technology is a patented hybridoma-based technology for making rabbit monoclonal antibodies. For details on our patents, please refer to <a href="#">RabMAb<sup>®</sup> patents</a>.</p> <p>Mouse, Rat: We have preliminary internal testing data to indicate this antibody may not react with these species. Please contact us for more information.</p>

#### Properties

Form	Liquid
Storage instructions	Shipped at 4°C. Store at -20°C. Stable for 12 months at -20°C.
Dissociation constant (K <sub>D</sub> )	K <sub>D</sub> = 1.40 x 10 <sup>-10</sup> M



<b>Storage buffer</b>	pH: 7.2 Preservative: 0.05% Sodium azide Constituents: 40% Glycerol (glycerin, glycerine), 9.85% Tris glycine, 50% Tissue culture supernatant
<b>Purity</b>	Protein A purified
<b>Clonality</b>	Monoclonal
<b>Clone number</b>	EPR5609
<b>Isotype</b>	IgG

## Applications

**The Abpromise guarantee** Our **Abpromise guarantee** covers the use of ab133523 in the following tested applications. The application notes include recommended starting dilutions; optimal dilutions/concentrations should be determined by the end user.

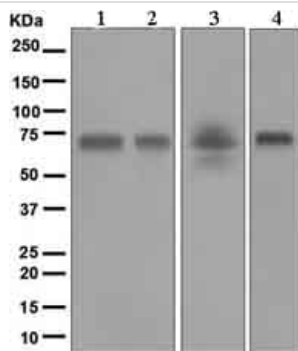
Application	Abreviews	Notes
<b>WB</b>		1/50000 - 1/200000. Detects a band of approximately 70-75 kDa (predicted molecular weight: 51 kDa).

**Application notes** Is unsuitable for ICC/IF or IHC-P.

## Target

<b>Function</b>	Binds heme and transports it to the liver for breakdown and iron recovery, after which the free hemopexin returns to the circulation.
<b>Tissue specificity</b>	Expressed by the liver and secreted in plasma.
<b>Sequence similarities</b>	Belongs to the hemopexin family. Contains 5 hemopexin-like domains.
<b>Post-translational modifications</b>	N- and O-glycosylated. O-glycosylated with core 1 or possibly core 8 glycans.
<b>Cellular localization</b>	Secreted.

## Images



Western blot - Anti-Hemopexin antibody [EPR5609]  
(ab133523)

**All lanes** : Anti-Hemopexin antibody [EPR5609] (ab133523) at  
1/50000 dilution

**Lane 1** : Human plasma lysate

**Lane 2** : Human placenta lysate

**Lane 3** : Human fetal liver lysate

**Lane 4** : Human thyroid lysate

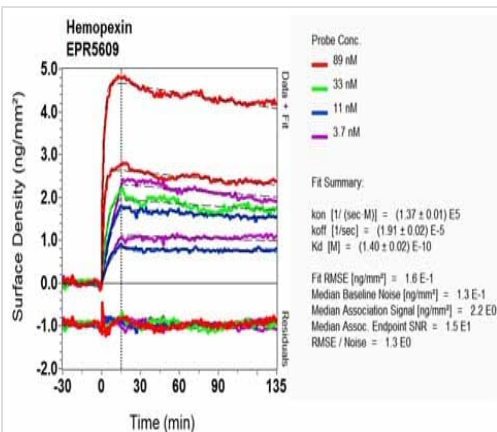
Lysates/proteins at 10 µg per lane.

## Secondary

**All lanes** : HRP labelled Goat anti Rabbit IgG at 1/2000 dilution

**Predicted band size:** 51 kDa

**Observed band size:** 70-75 kDa



O1-RD Scanning - Anti-Hemopexin antibody  
[EPR5609] (ab133523)

Equilibrium dissociation constant ( $K_D$ )

Learn more about  $K_D$

[Click here to learn more about  \$K\_D\$](#)

Why choose a  
recombinant antibody?



**Research with  
confidence**  
Consistent and  
reproducible results



**Long-term and  
scalable supply**  
Recombinant  
technology



**Success from the  
first experiment**  
Confirmed  
specificity



**Ethical standards  
compliant**  
Animal-free  
production

Anti-Hemopexin antibody [EPR5609] (ab133523)

**Please note:** All products are "FOR RESEARCH USE ONLY. NOT FOR USE IN DIAGNOSTIC PROCEDURES"

### **Our Abpromise to you: Quality guaranteed and expert technical support**

---

- Replacement or refund for products not performing as stated on the datasheet
- Valid for 12 months from date of delivery
- Response to your inquiry within 24 hours
  
- We provide support in Chinese, English, French, German, Japanese and Spanish
- Extensive multi-media technical resources to help you
- We investigate all quality concerns to ensure our products perform to the highest standards

If the product does not perform as described on this datasheet, we will offer a refund or replacement. For full details of the Abpromise, please visit <https://www.abcam.com/abpromise> or contact our technical team.

### **Terms and conditions**

---

- Guarantee only valid for products bought direct from Abcam or one of our authorized distributors