

Product datasheet

Anti-Hemopexin antibody [EPR5610] ab124935

Recombinant RabMAb

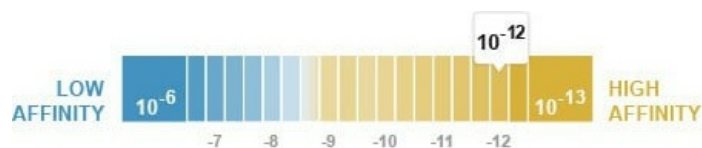
★★★★★ [2 Abreviews](#) [2 References](#) [7 Images](#)

Overview

Product name	Anti-Hemopexin antibody [EPR5610]
Description	Rabbit monoclonal [EPR5610] to Hemopexin
Host species	Rabbit
Tested applications	Suitable for: Flow Cyt (Intra), WB, IP, IHC-P, ICC/IF
Species reactivity	Reacts with: Human Does not react with: Mouse, Rat
Immunogen	Synthetic peptide within Human Hemopexin aa 400-500. The exact sequence is proprietary.
Positive control	WB: Human fetal liver and plasma lysates. IHC-P: Human liver tissue. Flow Cyt (intra): HepG2 cells. ICC: HepG2 cells.
General notes	<p>This product is a recombinant monoclonal antibody, which offers several advantages including:</p> <ul style="list-style-type: none"> - High batch-to-batch consistency and reproducibility - Improved sensitivity and specificity - Long-term security of supply - Animal-free production <p>For more information see here.</p> <p>Our RabMAb[®] technology is a patented hybridoma-based technology for making rabbit monoclonal antibodies. For details on our patents, please refer to RabMAb[®] patents.</p>

Properties

Form	Liquid
Storage instructions	Shipped at 4°C. Store at -20°C. Stable for 12 months at -20°C.
Dissociation constant (K_D)	K _D = 8.30 x 10 ⁻¹² M



[Learn more about K_D](#)

Storage buffer	pH: 7.2 Preservative: 0.05% Sodium azide
-----------------------	---

Constituents: 40% Glycerol (glycerin, glycerine), 9.85% Tris glycine, 50% Tissue culture supernatant

Purity	Tissue culture supernatant
Clonality	Monoclonal
Clone number	EPR5610
Isotype	IgG

Applications

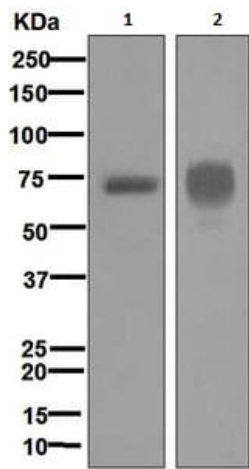
The Abpromise guarantee Our **Abpromise guarantee** covers the use of ab124935 in the following tested applications. The application notes include recommended starting dilutions; optimal dilutions/concentrations should be determined by the end user.

Application	Abreviews	Notes
Flow Cyt (Intra)		1/200.
WB	★★★★★ (1)	1/10000 - 1/50000. Detects a band of approximately 70-75 kDa (predicted molecular weight: 52 kDa).
IP		1/10 - 1/100.
IHC-P	★★★★★ (1)	1/250 - 1/500. Perform heat mediated antigen retrieval with citrate buffer pH 6 before commencing with IHC staining protocol.
ICC/IF		1/100 - 1/250.

Target

Function	Binds heme and transports it to the liver for breakdown and iron recovery, after which the free hemopexin returns to the circulation.
Tissue specificity	Expressed by the liver and secreted in plasma.
Sequence similarities	Belongs to the hemopexin family. Contains 5 hemopexin-like domains.
Post-translational modifications	N- and O-glycosylated. O-glycosylated with core 1 or possibly core 8 glycans.
Cellular localization	Secreted.

Images



Western blot - Anti-Hemopexin antibody [EPR5610] (ab124935)

All lanes : Anti-Hemopexin antibody [EPR5610] (ab124935) at 1/10000 dilution

Lane 1 : Fetal liver lysate

Lane 2 : Human plasma lysate

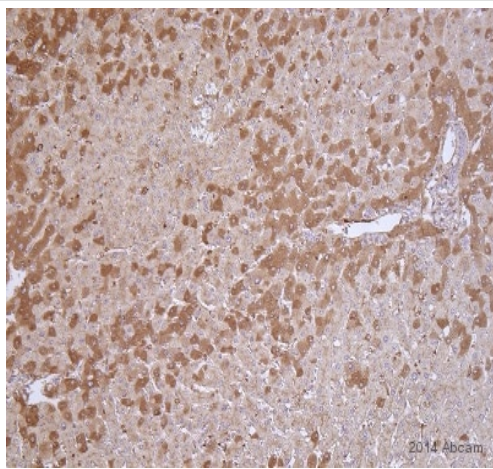
Lysates/proteins at 10 µg per lane.

Secondary

All lanes : HRP labelled Goat anti Rabbit IgG at 1/2000 dilution

Predicted band size: 52 kDa

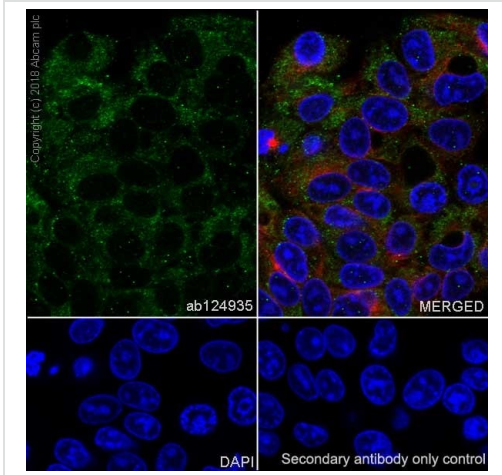
Observed band size: 70-75 kDa



Immunohistochemistry (Formalin/PFA-fixed paraffin-embedded sections) - Anti-Hemopexin antibody [EPR5610] (ab124935)

This image is courtesy of an Abreview submitted by Steffen Rickelt

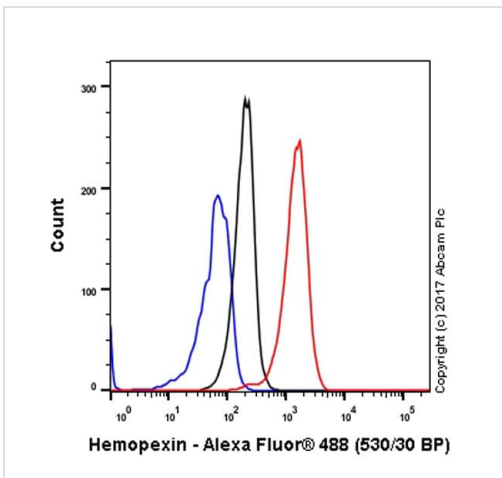
ab124935 staining Hemopexin in human liver tissue sections by Immunohistochemistry (IHC-P - paraformaldehyde-fixed, paraffin-embedded sections). Tissue was fixed with formaldehyde, permeabilized with 0.2% Triton X-100 in PBS and blocked with 5% milk for 30 minutes at room temperature; antigen retrieval was by heat mediation in Tris pH 9.0. Samples were incubated with primary antibody (1/200 in PBS) for 16 hours at 4°C. An undiluted Biotin-conjugated goat anti-rabbit IgG polyclonal was used as the secondary antibody.



Immunocytochemistry/ Immunofluorescence - Anti-Hemopexin antibody [EPR5610] (ab124935)

Immunocytochemistry analysis of HepG2 (human hepatocellular carcinoma epithelial cell) labeling Hemopexin with purified ab124935 at 1/200 dilution (10 µg/ml). Cells were fixed with 100% methanol. Goat anti rabbit IgG (Alexa Fluor® 488, **ab150077**) at 1/1000 (2 µg/ml) was used as the secondary antibody. **ab195889** Anti-alpha Tubulin antibody [DM1A] - Microtubule Marker (Alexa Fluor® 594) 1/200 (2.8 µg/ml) was used as counterstain. Nuclei were stained blue with DAPI.

Negative control: PBS instead of the primary antibody.



Flow Cytometry (Intracellular) - Anti-Hemopexin antibody [EPR5610] (ab124935)

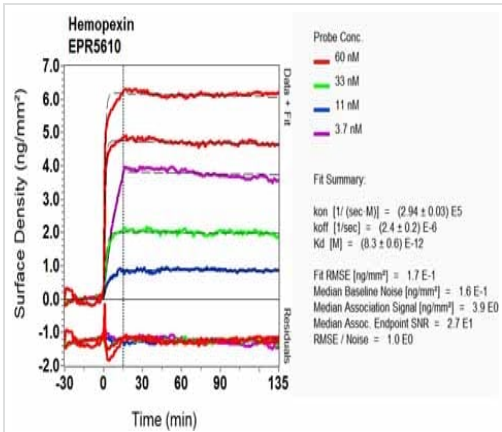
Intracellular Flow Cytometry analysis of HepG2 (Human hepatocellular carcinoma epithelial cell) cells labeling Hemopexin (red) with ab124935 at a 1/200 dilution. Cells were fixed with 4% paraformaldehyde and permeabilized with 90% methanol. A goat anti-rabbit IgG (Alexa Fluor® 488) (**ab150077**) was used as the secondary antibody at a 1/2000 dilution. Black - Rabbit monoclonal IgG (Black) (**ab172730**). Blue (unlabeled control) - Cell without incubation with primary antibody and secondary antibody (Blue).



ab124935, at 1/250 dilution, staining Hemopexin in paraffin-embedded Human liver tissue by Immunohistochemistry.

Perform heat mediated antigen retrieval with citrate buffer pH 6 before commencing with IHC staining protocol.

Immunohistochemistry (Formalin/PFA-fixed paraffin-embedded sections) - Anti-Hemopexin antibody [EPR5610] (ab124935)



Ox-LD Scanning - Anti-Hemopexin antibody [EPR5610] (ab124935)

Equilibrium dissociation constant (K_D)

Learn more about K_D

[Click here to learn more about \$K_D\$](#)

Why choose a recombinant antibody?

 Research with confidence Consistent and reproducible results	 Long-term and scalable supply Recombinant technology
 Success from the first experiment Confirmed specificity	 Ethical standards compliant Animal-free production

Anti-Hemopexin antibody [EPR5610] (ab124935)

Please note: All products are "FOR RESEARCH USE ONLY. NOT FOR USE IN DIAGNOSTIC PROCEDURES"

Our Abpromise to you: Quality guaranteed and expert technical support

- Replacement or refund for products not performing as stated on the datasheet

- Valid for 12 months from date of delivery
- Response to your inquiry within 24 hours

- We provide support in Chinese, English, French, German, Japanese and Spanish
- Extensive multi-media technical resources to help you
- We investigate all quality concerns to ensure our products perform to the highest standards

If the product does not perform as described on this datasheet, we will offer a refund or replacement. For full details of the Abpromise, please visit <https://www.abcam.com/abpromise> or contact our technical team.

Terms and conditions

- Guarantee only valid for products bought direct from Abcam or one of our authorized distributors