



Product datasheet

Anti-Heparanase 1 antibody ab232817

[2 References](#) [3 Images](#)

Overview

Product name	Anti-Heparanase 1 antibody
Description	Rabbit polyclonal to Heparanase 1
Host species	Rabbit
Tested applications	Suitable for: WB, IHC-P
Species reactivity	Reacts with: Human
Immunogen	Recombinant fragment (His-tag) corresponding to Human Heparanase 1 aa 1-150. (Expressed in E.coli). Database link: Q9Y251
	 Run BLAST with  Run BLAST with
Positive control	IHC-P: Human spleen tissue. WB: HeLa and HepG2 cell lysates; Recombinant human Heparanase 1 protein.
General notes	<p>The Life Science industry has been in the grips of a reproducibility crisis for a number of years. Abcam is leading the way in addressing this with our range of recombinant monoclonal antibodies and knockout edited cell lines for gold-standard validation. Please check that this product meets your needs before purchasing.</p> <p>If you have any questions, special requirements or concerns, please send us an inquiry and/or contact our Support team ahead of purchase. Recommended alternatives for this product can be found below, along with publications, customer reviews and Q&As</p>

Properties

Form	Liquid
Storage instructions	Shipped at 4°C. Store at +4°C short term (1-2 weeks). Upon delivery aliquot. Store at -20°C long term. Avoid freeze / thaw cycle.
Storage buffer	pH: 7.40 Preservative: 0.011% Proclin 300 Constituents: 55.77% Glycerol (glycerin, glycerine), 44.219% PBS
Purity	Immunogen affinity purified
Purification notes	ab232817 was purified by antigen-specific affinity chromatography followed by Protein A affinity chromatography.
Clonality	Polyclonal

Isotype

IgG

Applications

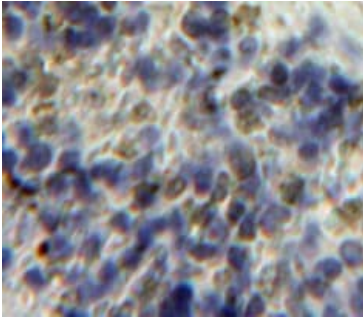
The Abpromise guarantee Our **Abpromise guarantee** covers the use of ab232817 in the following tested applications. The application notes include recommended starting dilutions; optimal dilutions/concentrations should be determined by the end user.

Application	Abreviews	Notes
WB		Use a concentration of 0.2 - 2 µg/ml. Predicted molecular weight: 61 kDa.
IHC-P		Use a concentration of 5 - 20 µg/ml.

Target

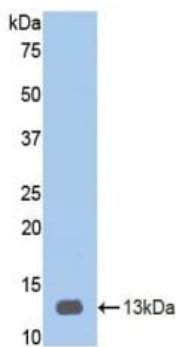
Function	Endoglycosidase which is a cell surface and extracellular matrix-degrading enzyme. Cleaves heparan sulfate proteoglycans (HSPGs) into heparan sulfate side chains and core proteoglycans. Also implicated in the extravasation of leukocytes and tumor cell lines. Due to its contribution to metastasis and angiogenesis, it is considered to be a potential target for anti-cancer therapies.
Tissue specificity	Highly expressed in placenta and spleen and weakly expressed in lymph node, thymus, peripheral blood leukocytes, bone marrow, endothelial cells, fetal liver and tumor tissues.
Sequence similarities	Belongs to the glycosyl hydrolase 79 family.
Post-translational modifications	Proteolytically processed. The cleavage of the 65 kDa form leads to the generation of a linker peptide, 8 kDa and 50 kDa product. The active form, the 8/50 kDa heterodimer, is resistant to degradation. Complete removal of the linker peptide appears to be a prerequisite to the complete activation of the enzyme. N-glycosylated. Glycosylation of the 50 kDa subunit appears to be essential for its solubility.
Cellular localization	Lysosome membrane. Secreted. Secreted, internalised and transferred to late endosomes/lysosomes as a proheparanase. In lysosomes, it is processed into the active form, the heparanase. The uptake or internalisation of proheparanase is mediated by HSPGs. Heparin appears to be a competitor and retain proheparanase in the extracellular medium.

Images



Immunohistochemistry (Formalin/PFA-fixed paraffin-embedded sections) - Anti-Heparanase 1 antibody (ab232817)

Formalin-fixed, paraffin-embedded human spleen tissue stained for Heparanase 1 using ab232817 at 20 µg/ml in immunohistochemical analysis. DAB staining.



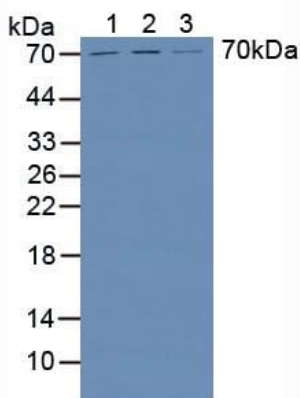
Western blot - Anti-Heparanase 1 antibody (ab232817)

Anti-Heparanase 1 antibody (ab232817) at 3 µg/ml + Recombinant human Heparanase 1 protein

Secondary

HRP-Linked Guinea pig Anti-Rabbit at 1/2000 dilution

Predicted band size: 61 kDa



Western blot - Anti-Heparanase 1 antibody (ab232817)

All lanes : Anti-Heparanase 1 antibody (ab232817) at 3 µg/ml

Lane 1 : HeLa (human epithelial cell line from cervix adenocarcinoma) cell lysate

Lane 2 : HepG2 (human liver hepatocellular carcinoma cell line) cell lysate

Lane 3 : Human liver lysate

Secondary

All lanes : HRP-Linked Guinea pig Anti-Rabbit at 1/2000 dilution

Predicted band size: 61 kDa

Our Abpromise to you: Quality guaranteed and expert technical support

- Replacement or refund for products not performing as stated on the datasheet
- Valid for 12 months from date of delivery
- Response to your inquiry within 24 hours

- We provide support in Chinese, English, French, German, Japanese and Spanish
- Extensive multi-media technical resources to help you
- We investigate all quality concerns to ensure our products perform to the highest standards

If the product does not perform as described on this datasheet, we will offer a refund or replacement. For full details of the Abpromise, please visit <https://www.abcam.com/abpromise> or contact our technical team.

Terms and conditions

- Guarantee only valid for products bought direct from Abcam or one of our authorized distributors