


Product datasheet

Anti-Hepcidin-25 antibody ab30760

★★★★★ [9 Abreviews](#) [35 References](#) [3 Images](#)

Overview

Product name	Anti-Hepcidin-25 antibody
Description	Rabbit polyclonal to Hepcidin-25
Host species	Rabbit
Specificity	From Jan 2024, QC testing of replenishment batches of this polyclonal changed. All tested and expected application and reactive species combinations are still covered by our Abcam product promise. However, we no longer test all species. For more information on a specific batch, please contact our Scientific Support who will be happy to help.
Tested applications	Suitable for: WB, IHC-P
Species reactivity	Reacts with: Rat, Human Predicted to work with: Mouse 
Immunogen	Synthetic peptide conjugated to KLH derived from within residues 50 to the C-terminus of Human Hepcidin-25. Read Abcam's proprietary immunogen policy (Peptide available as ab31875 .)
Positive control	WB: Recombinant Hepcidin protein. IHC-P: Human liver tissue.
General notes	<p>The Life Science industry has been in the grips of a reproducibility crisis for a number of years. Abcam is leading the way in addressing this with our range of recombinant monoclonal antibodies and knockout edited cell lines for gold-standard validation. Please check that this product meets your needs before purchasing.</p> <p>If you have any questions, special requirements or concerns, please send us an inquiry and/or contact our Support team ahead of purchase. Recommended alternatives for this product can be found below, along with publications, customer reviews and Q&As</p>

Properties

Form	Liquid
Storage instructions	Shipped at 4°C. Store at +4°C short term (1-2 weeks). Upon delivery aliquot. Store at -20°C or -80°C. Avoid freeze / thaw cycle.
Storage buffer	pH: 7.40 Preservative: 0.02% Sodium azide Constituent: PBS
Batches of this product that have a concentration < 1mg/ml may have BSA added as a stabilising	

agent. If you would like information about the formulation of a specific lot, please contact our scientific support team who will be happy to help.

Purity	Immunogen affinity purified
Clonality	Polyclonal
Isotype	IgG

Applications

The Abpromise guarantee Our **Abpromise guarantee** covers the use of ab30760 in the following tested applications.

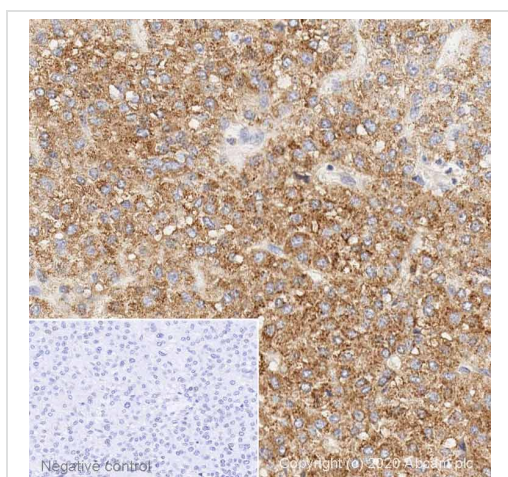
The application notes include recommended starting dilutions; optimal dilutions/concentrations should be determined by the end user.

Application	Abreviews	Notes
WB	★★★★★ (5)	1/10 - 1/100. Detects a band of approximately 32 kDa (predicted molecular weight: 3 kDa).
IHC-P	★★★★★ (1)	Use at an assay dependent concentration. Perform heat mediated antigen retrieval with citrate buffer pH 6 before commencing with IHC staining protocol.

Target

Function	<p>Liver-produced hormone that constitutes the main circulating regulator of iron absorption and distribution across tissues. Acts by promoting endocytosis and degradation of ferroportin, leading to the retention of iron in iron-exporting cells and decreased flow of iron into plasma. Controls the major flows of iron into plasma: absorption of dietary iron in the intestine, recycling of iron by macrophages, which phagocytose old erythrocytes and other cells, and mobilization of stored iron from hepatocytes (PubMed:22306005).</p> <p>Has strong antimicrobial activity against E.coli ML35P N.cinerea and weaker against S.epidermidis, S.aureus and group b streptococcus bacteria. Active against the fungus C.albicans. No activity against P.aeruginosa (PubMed:11113131, PubMed:11034317).</p>
Tissue specificity	Highest expression in liver and to a lesser extent in heart and brain. Low levels in lung, tonsils, salivary gland, trachea, prostate gland, adrenal gland and thyroid gland. Secreted into the urine.
Involvement in disease	Hemochromatosis 2B
Sequence similarities	Belongs to the hepcidin family.
Cellular localization	Secreted.
Form	Hepcidin produces a propeptide of 84 amino acids that undergoes enzymatic cleavage into mature peptides of 20, 22, and 25 amino acids. Active peptides are rich in cysteines that form intramolecular bonds and stabilize the beta-sheet structure

Images



Immunohistochemistry (Formalin/PFA-fixed paraffin-embedded sections) - Anti-Hepcidin-25 antibody (ab30760)

IHC image of Hepcidin-25 staining in Human normal liver formalin fixed paraffin embedded tissue section*, performed on a Leica Bond™ system using the standard protocol F. The section was pre-treated using heat mediated antigen retrieval with sodium citrate buffer (pH6, epitope retrieval solution 1) for 20 mins. The section was then incubated with ab30760, 5µg/ml, for 15 mins at room temperature and detected using an HRP conjugated compact polymer system. DAB was used as the chromogen. The section was then counterstained with haematoxylin and mounted with DPX.

For other IHC staining systems (automated and non-automated) customers should optimize variable parameters such as antigen retrieval conditions, primary antibody concentration and antibody incubation times.

**Tissue obtained from the Human Research Tissue Bank, supported by the NIHR Cambridge Biomedical Research Centre*



Western blot - Anti-Hepcidin-25 antibody (ab30760)

Anti-Hepcidin-25 antibody (ab30760) at 1 µg/ml + HAMP Human Full-length Recombinant Protein (Tagged) at 0.1 µg

Secondary

Goat polyclonal to Rabbit IgG - H&L - Pre-Adsorbed (HRP) at 1/3000 dilution

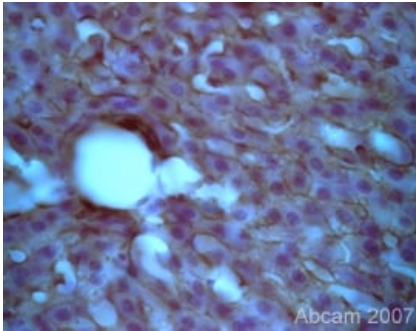
Performed under reducing conditions.

Predicted band size: 3 kDa

Observed band size: 32 kDa

Exposure time: 3 minutes

ab30760 was tested against Human HAMP Full-length Recombinant Protein (Tagged) predicted to run at 32kDa.



Hepcidin-25 expression in rat liver cells using Rabbit polyclonal to Hepcidin-25 (ab30760). Immunohistochemistry was performed on PFA fixed cells, ab30760 was used at 1/1000 incubated overnight at RT. Haemotoxylin is used as a nuclear counterstain in this image.

Immunohistochemistry (Formalin/PFA-fixed paraffin-embedded sections) - Anti-Hepcidin-25 antibody (ab30760)

This image is courtesy of Ruma Raha-Chowdhury (Cambridge University)

Please note: All products are "FOR RESEARCH USE ONLY. NOT FOR USE IN DIAGNOSTIC PROCEDURES"

Our Abpromise to you: Quality guaranteed and expert technical support

- Replacement or refund for products not performing as stated on the datasheet
- Valid for 12 months from date of delivery
- Response to your inquiry within 24 hours
- We provide support in Chinese, English, French, German, Japanese and Spanish
- Extensive multi-media technical resources to help you
- We investigate all quality concerns to ensure our products perform to the highest standards

If the product does not perform as described on this datasheet, we will offer a refund or replacement. For full details of the Abpromise, please visit <https://www.abcam.com/abpromise> or contact our technical team.

Terms and conditions

- Guarantee only valid for products bought direct from Abcam or one of our authorized distributors