


Anti-HERC2 antibody ab85832

[6 References](#) [2 Images](#)

Overview

Product name	Anti-HERC2 antibody
Description	Rabbit polyclonal to HERC2
Host species	Rabbit
Tested applications	Suitable for: WB, IP
Species reactivity	Reacts with: Human Predicted to work with: Mouse, Rabbit, Horse, Chicken, Guinea pig, Cow, Dog, Turkey, Pig, Chimpanzee, Zebrafish, Rhesus monkey, Gorilla, Xenopus tropicalis 
Immunogen	Synthetic peptide corresponding to Human HERC2 aa 4750-4850. Database link: O95714
Positive control	Whole cell lysate from HeLa cells.
General notes	<p>The Life Science industry has been in the grips of a reproducibility crisis for a number of years. Abcam is leading the way in addressing this with our range of recombinant monoclonal antibodies and knockout edited cell lines for gold-standard validation. Please check that this product meets your needs before purchasing.</p> <p>If you have any questions, special requirements or concerns, please send us an inquiry and/or contact our Support team ahead of purchase. Recommended alternatives for this product can be found below, along with publications, customer reviews and Q&As</p>

Properties

Form	Liquid
Storage instructions	Shipped at 4°C. Upon delivery aliquot and store at -20°C. Avoid freeze / thaw cycles.
Storage buffer	pH: 7 Preservative: 0.09% Sodium azide Constituent: Tris citrate/phosphate
Purity	Immunogen affinity purified
Clonality	Polyclonal
Isotype	IgG

Applications

The Abpromise guarantee

Our **Abpromise guarantee** covers the use of ab85832 in the following tested applications.

The application notes include recommended starting dilutions; optimal dilutions/concentrations should be determined by the end user.

Application	Abreviews	Notes
WB		1/2000 - 1/10000. Predicted molecular weight: 527 kDa.
IP		Use at 2-5 µg/mg of lysate.

Target**Function**

E3 ubiquitin-protein ligase that regulates ubiquitin-dependent retention of repair proteins on damaged chromosomes. Recruited to sites of DNA damage in response to ionizing radiation (IR) and facilitates the assembly of UBE2N and RNF8 promoting DNA damage-induced formation of 'Lys-63'-linked ubiquitin chains. Acts as a mediator of binding specificity between UBE2N and RNF8. Involved in the maintenance of RNF168 levels. E3 ubiquitin-protein ligase that promotes the ubiquitination and proteasomal degradation of XPA which influences the circadian oscillation of DNA excision repair activity.

Pathway

Protein modification; protein ubiquitination.

Involvement in disease

Mental retardation, autosomal recessive 38

Sequence similarities

Contains 1 cytochrome b5 heme-binding domain.
Contains 1 DOC domain.
Contains 1 HECT (E6AP-type E3 ubiquitin-protein ligase) domain.
Contains 1 MIB/HERC2 domain.
Contains 21 RCC1 repeats.
Contains 1 ZZ-type zinc finger.

Domain

The ZZ-type zinc finger mediates binding to SUMO1, and at low level SUMO2.
The RCC1 repeats are grouped into three seven-bladed beta-propeller regions.

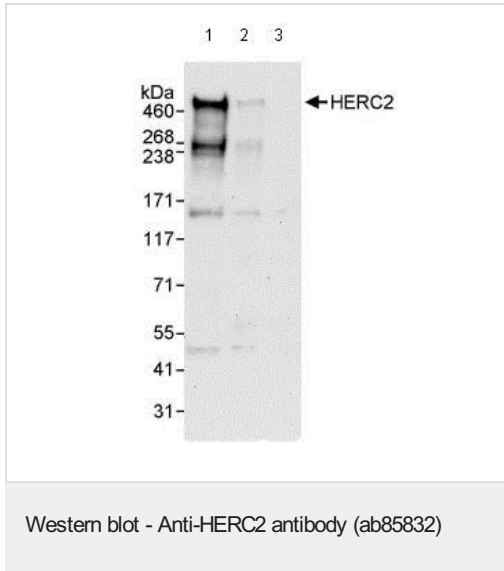
Post-translational modifications

Phosphorylation at Thr-4827 is required for interaction with RNF8.
Sumoylated with SUMO1 by PIAS4 in response to double-strand breaks (DSBs), promoting the interaction with RNF8.

Cellular localization

Cytoplasm. Cytoplasm, cytoskeleton, microtubule organizing center, centrosome, centriole.
Nucleus. Recruited to sites of DNA damage in response to ionizing radiation (IR) via its interaction with RNF8. May loose association with centrosomes during mitosis.

Images



All lanes : Anti-HERC2 antibody (ab85832) at 0.1 µg/ml

Lane 1 : Whole cell lysate from HeLa cells at 50 µg

Lane 2 : Whole cell lysate from HeLa cells at 15 µg

Lane 3 : Whole cell lysate from HeLa cells at 5 µg

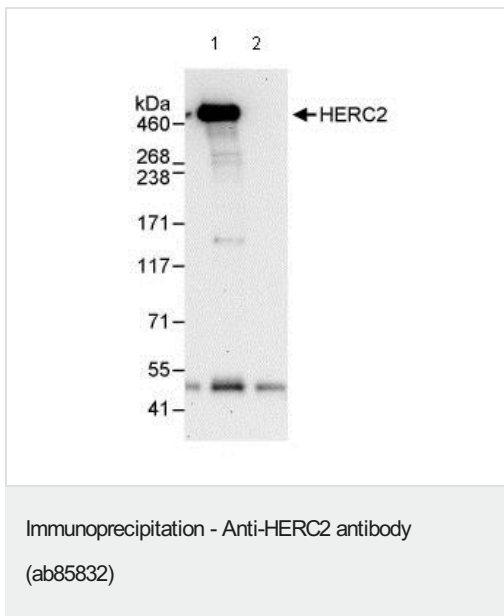
Developed using the ECL technique.

Predicted band size: 527 kDa

Observed band size: 527 kDa

Additional bands at: 160 kDa, 260 kDa, 50 kDa. We are unsure as to the identity of these extra bands.

Exposure time: 2 minutes



Immunoprecipitation/ Western Blot

For IP:

Lane 1: ab85832 at 3µg/mg whole cell lysate.

Lane 2: Control IgG.

ab85832 at 1µg/ml for WB

Whole cell lysate from HeLa cells at 1mg for IP, 20% of IP loaded.

Chemiluminescence with an exposure time of 30 seconds.

Please note: All products are "FOR RESEARCH USE ONLY. NOT FOR USE IN DIAGNOSTIC PROCEDURES"

Our Abpromise to you: Quality guaranteed and expert technical support

- Replacement or refund for products not performing as stated on the datasheet

- Valid for 12 months from date of delivery
- Response to your inquiry within 24 hours

- We provide support in Chinese, English, French, German, Japanese and Spanish
- Extensive multi-media technical resources to help you
- We investigate all quality concerns to ensure our products perform to the highest standards

If the product does not perform as described on this datasheet, we will offer a refund or replacement. For full details of the Abpromise, please visit <https://www.abcam.com/abpromise> or contact our technical team.

Terms and conditions

- Guarantee only valid for products bought direct from Abcam or one of our authorized distributors