


## Product datasheet

### Anti-HERPUD1 antibody [EPR9649] ab150424

Recombinant RabMAb

[8 References](#) [4 Images](#)

#### Overview

<b>Product name</b>	Anti-HERPUD1 antibody [EPR9649]
<b>Description</b>	Rabbit monoclonal [EPR9649] to HERPUD1
<b>Host species</b>	Rabbit
<b>Tested applications</b>	<b>Suitable for:</b> WB, ICC/IF, Flow Cyt (Intra) <b>Unsuitable for:</b> IHC-P or IP
<b>Species reactivity</b>	<b>Reacts with:</b> Human <b>Predicted to work with:</b> Mouse, Rat 
<b>Immunogen</b>	Synthetic peptide within Human HERPUD1 aa 300-400 (internal sequence). The exact sequence is proprietary.
<b>Positive control</b>	BxPC-3, HepG2, SH-SY5Y and 293T cell lysates; BxPC-3 and HepG2 cells.
<b>General notes</b>	<p>This product is a recombinant monoclonal antibody, which offers several advantages including:</p> <ul style="list-style-type: none"> <li>- High batch-to-batch consistency and reproducibility</li> <li>- Improved sensitivity and specificity</li> <li>- Long-term security of supply</li> <li>- Animal-free production</li> </ul> <p>For more information <a href="#">see here</a>.</p> <p>Our RabMAb<sup>®</sup> technology is a patented hybridoma-based technology for making rabbit monoclonal antibodies. For details on our patents, please refer to <a href="#">RabMAb<sup>®</sup> patents</a>.</p>

#### Properties

<b>Form</b>	Liquid
<b>Storage instructions</b>	Shipped at 4°C. Store at -20°C.
<b>Storage buffer</b>	pH: 7.2 Preservative: 0.01% Sodium azide Constituents: 9% PBS, 40% Glycerol (glycerin, glycerine), 0.05% BSA, 50% Tissue culture supernatant
<b>Purity</b>	Protein A purified
<b>Clonality</b>	Monoclonal

Clone number	EPR9649
Isotype	IgG

## Applications

**The Abpromise guarantee** Our **Abpromise guarantee** covers the use of ab150424 in the following tested applications. The application notes include recommended starting dilutions; optimal dilutions/concentrations should be determined by the end user.

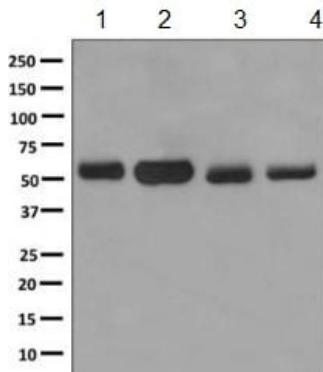
Application	Abreviews	Notes
WB		1/1000 - 1/10000. Predicted molecular weight: 44 kDa.
ICC/IF		1/100 - 1/250.
Flow Cyt (Intra)		1/10 - 1/100. <b>ab172730</b> - Rabbit monoclonal IgG, is suitable for use as an isotype control with this antibody.

**Application notes** Is unsuitable for IHC-P or IP.

## Target

<b>Function</b>	Component of the endoplasmic reticulum quality control (ERQC) system also called ER-associated degradation (ERAD) involved in ubiquitin-dependent degradation of misfolded endoplasmic reticulum proteins. Could enhance presenilin-mediated beta-amyloid protein 40 generation.
<b>Tissue specificity</b>	Widely expressed; in the brain, expression seems to be restricted to neurons and vascular smooth muscle cells. Present in activated microglia in senile plaques in the brain of patients with Alzheimer disease.
<b>Sequence similarities</b>	Contains 1 ubiquitin-like domain.
<b>Cellular localization</b>	Endoplasmic reticulum membrane.

## Images



Western blot - Anti-HERPUD1 antibody [EPR9649] (ab150424)

**All lanes :** Anti-HERPUD1 antibody [EPR9649] (ab150424) at 1/1000 dilution

**Lane 1 :** BxPC-3 cell lysate

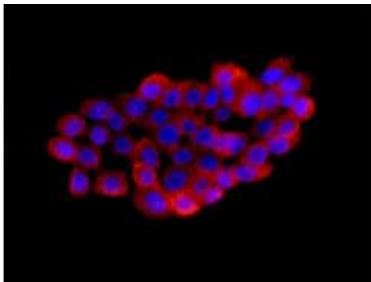
**Lane 2 :** HepG2 cell lysate

**Lane 3 :** SH-SY5Y cell lysate

**Lane 4 :** 293T (Human embryonic kidney epithelial cell) cell lysate

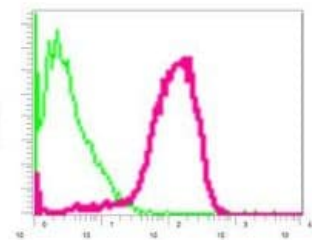
Lysates/proteins at 10 µg per lane.

**Predicted band size:** 44 kDa



Immunocytochemistry/ Immunofluorescence - Anti-HERPUD1 antibody [EPR9649] (ab150424)

Immunofluorescent analysis of BxPC-3 cells labelling HERPUD1 with ab150424 at 1/100 dilution.



Flow Cytometry (Intracellular) - Anti-HERPUD1 antibody [EPR9649] (ab150424)

Intracellular flow cytometric analysis of permeabilized HepG2 cells labelling HERPUD1 with ab150424 at 1/10 dilution (red) or a rabbit IgG (negative).

### Why choose a recombinant antibody?



**Research with confidence**  
Consistent and reproducible results



**Long-term and scalable supply**  
Recombinant technology



**Success from the first experiment**  
Confirmed specificity



**Ethical standards compliant**  
Animal-free production

Anti-HERPUD1 antibody [EPR9649] (ab150424)

**Please note:** All products are "FOR RESEARCH USE ONLY. NOT FOR USE IN DIAGNOSTIC PROCEDURES"

### Our Abpromise to you: Quality guaranteed and expert technical support

---

- Replacement or refund for products not performing as stated on the datasheet
- Valid for 12 months from date of delivery
- Response to your inquiry within 24 hours
- We provide support in Chinese, English, French, German, Japanese and Spanish
- Extensive multi-media technical resources to help you
- We investigate all quality concerns to ensure our products perform to the highest standards

If the product does not perform as described on this datasheet, we will offer a refund or replacement. For full details of the Abpromise, please visit <https://www.abcam.com/abpromise> or contact our technical team.

### Terms and conditions

---

- Guarantee only valid for products bought direct from Abcam or one of our authorized distributors