




Product datasheet

Anti-Hex antibody [OTI3E6] ab117864

★★★★★ [1 Abreviews](#) [3 Images](#)

Overview

Product name	Anti-Hex antibody [OTI3E6]
Description	Mouse monoclonal [OTI3E6] to Hex
Host species	Mouse
Tested applications	Suitable for: WB, ICC/IF
Species reactivity	Reacts with: Human Predicted to work with: Mouse 
Immunogen	Recombinant fragment corresponding to Human Hex aa 100 to the C-terminus. Produced in E.coli (NP_002720). Database link: Q03014 <div>  Run BLAST with  Run BLAST with </div>
Positive control	WB: HEK-293T cells lysate transfected with pCMV6-ENTRY Hex cDNA; HepG2 and HT-29 cell lysates. ICC/IF: HT-29 cells
General notes	Clone OTI3E6 (formerly 3E6). The Life Science industry has been in the grips of a reproducibility crisis for a number of years. Abcam is leading the way in addressing this with our range of recombinant monoclonal antibodies and knockout edited cell lines for gold-standard validation. Please check that this product meets your needs before purchasing. If you have any questions, special requirements or concerns, please send us an inquiry and/or contact our Support team ahead of purchase. Recommended alternatives for this product can be found below, along with publications, customer reviews and Q&As

Properties

Form	Liquid
Storage instructions	Shipped at 4°C. Store at +4°C short term (1-2 weeks). Upon delivery aliquot. Store at -20°C. Avoid freeze / thaw cycle.
Storage buffer	pH: 7.30 Preservative: 0.02% Sodium azide Constituents: PBS, 1% BSA, 50% Glycerol
Purity	Affinity purified
Purification notes	Purified from cell culture supernatant by affinity chromatography.

Clonality	Monoclonal
Clone number	OTI3E6
Isotype	IgG2b

Applications

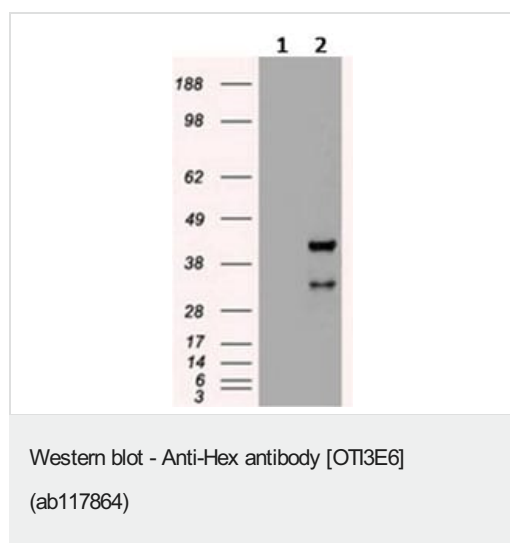
The Abpromise guarantee Our **Abpromise guarantee** covers the use of ab117864 in the following tested applications. The application notes include recommended starting dilutions; optimal dilutions/concentrations should be determined by the end user.

Application	Abreviews	Notes
WB		1/1000. Predicted molecular weight: 30 kDa.
ICC/IF	★★★★★ (1)	1/100.

Target

Function	Recognizes the DNA sequence 5'-ATTAA-3'. Transcriptional repressor. May play a role in hematopoietic differentiation. Establishes anterior identity at two levels; acts early to enhance canonical WNT-signaling by repressing expression of TLE4, and acts later to inhibit NODAL-signaling by directly targeting NODAL.
Tissue specificity	Liver and promyelocytic leukemia cell line HL60.
Sequence similarities	Contains 1 homeobox DNA-binding domain.
Developmental stage	Expressed during hematopoiesis.
Cellular localization	Nucleus.

Images



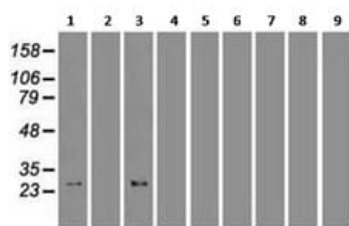
All lanes : Anti-Hex antibody [OTI3E6] (ab117864) at 1/1000 dilution

Lane 1 : HEK-293T (human epithelial cell line from embryonic kidney transformed with large T antigen) cell lysate transfected with pCMV6-ENTRY control

Lane 2 : HEK-293T cells lysate transfected with pCMV6-ENTRY Hex cDNA

Lysates/proteins at 5 µg per lane.

Predicted band size: 30 kDa



Western blot - Anti-Hex antibody [OTI3E6]
(ab117864)

All lanes : Anti-Hex antibody [OTI3E6] (ab117864) at 1/1000 dilution

Lane 1 : HepG2 (human liver hepatocellular carcinoma cell line) cell extract

Lane 2 : HeLa (human epithelial cell line from cervix adenocarcinoma) cell extract

Lane 3 : HT-29 (human colorectal adenocarcinoma cell line) cell extract

Lane 4 : A549 (human lung carcinoma cell line) cell extract

Lane 5 : COS-7 (african green monkey kidney fibroblast-like cell line) cell extract

Lane 6 : Jurkat (human T cell leukemia cell line from peripheral blood) cell extract

Lane 7 : MDCK (canine kidney cell line) cell extract

Lane 8 : PC-12 (rat adrenal gland pheochromocytoma cell line) cell extract

Lane 9 : MCF7 (human breast adenocarcinoma cell line) cell extract

Lysates/proteins at 35 µg per lane.

Predicted band size: 30 kDa



Immunocytochemistry/ Immunofluorescence - Anti-Hex antibody [OTI3E6] (ab117864)

HT-29 (human colorectal adenocarcinoma cell line) cells stained for Hex (green) using ab117864 at 1/100 dilution in ICC/IF.

Please note: All products are "FOR RESEARCH USE ONLY. NOT FOR USE IN DIAGNOSTIC PROCEDURES"

Our Abpromise to you: Quality guaranteed and expert technical support

- Replacement or refund for products not performing as stated on the datasheet
- Valid for 12 months from date of delivery
- Response to your inquiry within 24 hours

- We provide support in Chinese, English, French, German, Japanese and Spanish
- Extensive multi-media technical resources to help you
- We investigate all quality concerns to ensure our products perform to the highest standards

If the product does not perform as described on this datasheet, we will offer a refund or replacement. For full details of the Abpromise, please visit <https://www.abcam.com/abpromise> or contact our technical team.

Terms and conditions

- Guarantee only valid for products bought direct from Abcam or one of our authorized distributors