

Anti-HFE antibody [EPR6750] - BSA and Azide free ab249584

Recombinant RabMAb

2 Images

Overview

Product name	Anti-HFE antibody [EPR6750] - BSA and Azide free
Description	Rabbit monoclonal [EPR6750] to HFE - BSA and Azide free
Host species	Rabbit
Tested applications	Suitable for: WB Unsuitable for: ICC/IF, IHC-P or IP
Species reactivity	Reacts with: Human
Immunogen	Synthetic peptide. This information is proprietary to Abcam and/or its suppliers.
Positive control	WB: HeLa, A375 and A431 cell lysates.
General notes	<p>ab249584 is the carrier-free version of ab170912.</p> <p>Our carrier-free antibodies are typically supplied in a PBS-only formulation, purified and free of BSA, sodium azide and glycerol. The carrier-free buffer and high concentration allow for increased conjugation efficiency.</p> <p>This conjugation-ready format is designed for use with fluorochromes, metal isotopes, oligonucleotides, and enzymes, which makes them ideal for antibody labelling, functional and cell-based assays, flow-based assays (e.g. mass cytometry) and Multiplex Imaging applications.</p> <p>Use our conjugation kits for antibody conjugates that are ready-to-use in as little as 20 minutes with <1 minute hands-on-time and 100% antibody recovery: available for fluorescent dyes, HRP, biotin and gold.</p> <p>This product is compatible with the Maxpar[®] Antibody Labeling Kit from Fluidigm, without the need for antibody preparation. Maxpar[®] is a trademark of Fluidigm Canada Inc.</p> <p>This product is a recombinant monoclonal antibody, which offers several advantages including:</p> <ul style="list-style-type: none"> - High batch-to-batch consistency and reproducibility - Improved sensitivity and specificity - Long-term security of supply - Animal-free production <p>For more information see here.</p> <p>Our RabMAb[®] technology is a patented hybridoma-based technology for making rabbit monoclonal antibodies. For details on our patents, please refer to RabMAb[®] patents.</p>

Properties

Form	Liquid
Storage instructions	Shipped at 4°C. Store at +4°C. Do Not Freeze.
Storage buffer	pH: 7.2 Constituent: PBS
Carrier free	Yes
Purity	Affinity purified
Clonality	Monoclonal
Clone number	EPR6750
Isotype	IgG

Applications

The Abpromise guarantee Our **Abpromise guarantee** covers the use of ab249584 in the following tested applications. The application notes include recommended starting dilutions; optimal dilutions/concentrations should be determined by the end user.

Application	Abreviews	Notes
WB		Use at an assay dependent concentration. Predicted molecular weight: 40 kDa.

Application notes Is unsuitable for ICC/IF, IHC-P or IP.

Target

Function	Binds to transferrin receptor (TFR) and reduces its affinity for iron-loaded transferrin.
Tissue specificity	Expressed in all tissues tested except brain.
Involvement in disease	<p>Defects in HFE are a cause of hemochromatosis (HFE) [MIM:235200]. A disorder of iron metabolism characterized by iron overload. Excess iron is deposited in a variety of organs leading to their failure, and resulting in serious illnesses including cirrhosis, hepatomas, diabetes, cardiomyopathy, arthritis, and hypogonadotropic hypogonadism. Severe effects of the disease usually do not appear until after decades of progressive iron loading.</p> <p>Defects in HFE are associated with variegate porphyria (VP) [MIM:176200]. Porphyrins are inherited defects in the biosynthesis of heme, resulting in the accumulation and increased excretion of porphyrins or porphyrin precursors. They are classified as erythropoietic or hepatic, depending on whether the enzyme deficiency occurs in red blood cells or in the liver. VP is the most common form of porphyria in South Africa. It is characterized by skin hyperpigmentation and hypertrichosis, abdominal pain, tachycardia, hypertension and neuromuscular disturbances. High fecal levels of protoporphyrin and coproporphyrin, increased urine uroporphyrins and iron overload are typical markers of the disease. Note=Iron overload due to HFE mutations is a precipitating or exacerbating factor in variegate porphyria.</p> <p>Defects in HFE are associated with susceptibility to microvascular complications of diabetes type 7 (MVCD7) [MIM:612635]. These are pathological conditions that develop in numerous tissues and organs as a consequence of diabetes mellitus. They include diabetic retinopathy, diabetic nephropathy leading to end-stage renal disease, and diabetic neuropathy. Diabetic retinopathy remains the major cause of new-onset blindness among diabetic adults. It is characterized by</p>

vascular permeability and increased tissue ischemia and angiogenesis.

Sequence similarities

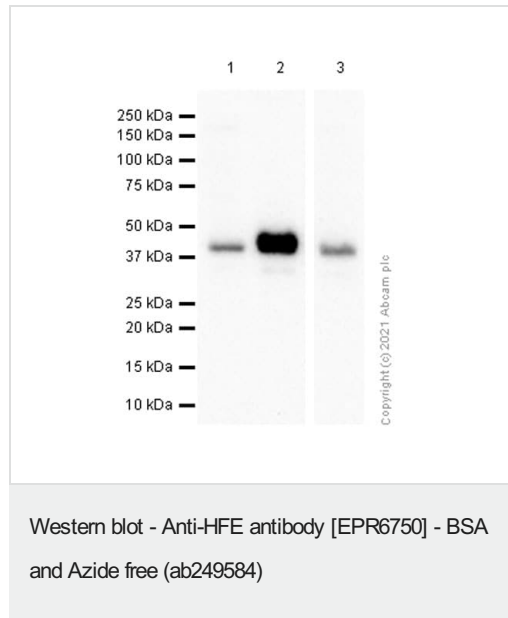
Belongs to the MHC class I family.

Contains 1 Ig-like C1-type (immunoglobulin-like) domain.

Cellular localization

Membrane.

Images



All lanes : Anti-HFE antibody [EPR6750] ([ab170912](#)) at 1/1000 dilution

Lane 1 : HeLa (Human cervix adenocarcinoma epithelial cell)

whole cell lysate

Lane 2 : A431 (Human epidermoid carcinoma epithelial cell) whole

cell lysate

Lane 3 : A375 (Human malignant melanoma epithelial cell) whole

cell lysate

Lysates/proteins at 20 µg per lane.

Secondary

All lanes : Goat Anti-Rabbit IgG H&L (HRP) ([ab97051](#)) at 1/20000 dilution

Predicted band size: 40 kDa

Observed band size: 40 kDa

This data was developed using [ab170912](#), the same antibody clone in a different buffer formulation.

Blocking buffer and concentration: 5% NFDM/TBST.

Diluting buffer and concentration: 1% BSA/TBST.

Why choose a recombinant antibody?



Research with confidence
Consistent and reproducible results



Long-term and scalable supply
Recombinant technology



Success from the first experiment
Confirmed specificity



Ethical standards compliant
Animal-free production

Anti-HFE antibody [EPR6750] - BSA and Azide free
(ab249584)

Please note: All products are "FOR RESEARCH USE ONLY. NOT FOR USE IN DIAGNOSTIC PROCEDURES"

Our Abpromise to you: Quality guaranteed and expert technical support

- Replacement or refund for products not performing as stated on the datasheet
- Valid for 12 months from date of delivery
- Response to your inquiry within 24 hours
- We provide support in Chinese, English, French, German, Japanese and Spanish
- Extensive multi-media technical resources to help you
- We investigate all quality concerns to ensure our products perform to the highest standards

If the product does not perform as described on this datasheet, we will offer a refund or replacement. For full details of the Abpromise, please visit <https://www.abcam.com/abpromise> or contact our technical team.

Terms and conditions

- Guarantee only valid for products bought direct from Abcam or one of our authorized distributors