

Product datasheet

Anti-HGF antibody ab24865

★★★★★ [2 Abreviews](#) [7 References](#) [2 Images](#)

Overview

Product name	Anti-HGF antibody
Description	Rabbit polyclonal to HGF
Host species	Rabbit
Tested applications	Suitable for: WB, Sandwich ELISA
Species reactivity	Reacts with: Human
Immunogen	Recombinant full length HGF (Human)
General notes	<p>The Life Science industry has been in the grips of a reproducibility crisis for a number of years. Abcam is leading the way in addressing this with our range of recombinant monoclonal antibodies and knockout edited cell lines for gold-standard validation. Please check that this product meets your needs before purchasing.</p> <p>If you have any questions, special requirements or concerns, please send us an inquiry and/or contact our Support team ahead of purchase. Recommended alternatives for this product can be found below, along with publications, customer reviews and Q&As</p>

Properties

Form	Liquid
Storage instructions	Shipped at 4°C. Store at +4°C short term (1-2 weeks). Upon delivery aliquot. Store at -20°C long term.
Storage buffer	Constituent: PBS
Purity	Protein A purified
Clonality	Polyclonal
Isotype	IgG

Applications

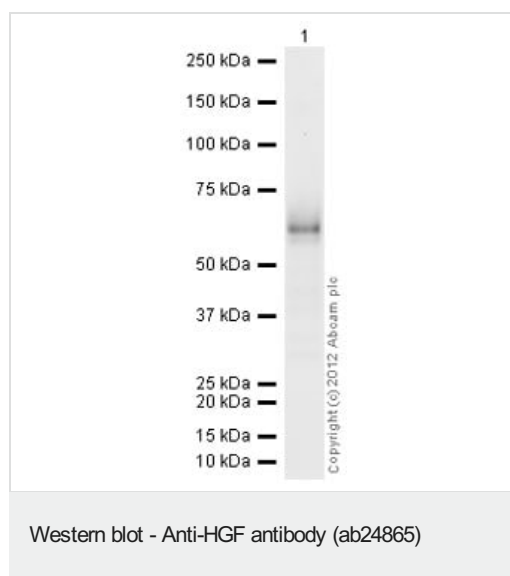
The Abpromise guarantee Our **Abpromise guarantee** covers the use of ab24865 in the following tested applications. The application notes include recommended starting dilutions; optimal dilutions/concentrations should be determined by the end user.

Application	Abreviews	Notes
WB		Use a concentration of 1 - 2 µg/ml. Predicted molecular weight: 83 kDa.
Sandwich ELISA		Use a concentration of 0.5 µg/ml. Can be paired for Sandwich ELISA with <u>Mouse monoclonal [EGH2 4C12.1] to HGF (ab10829)</u> . For sandwich ELISA, use this antibody as Detection at 0.5µg/ml with <u>ab10829</u> as Capture.

Target

Function	Potent mitogen for mature parenchymal hepatocyte cells, seems to be a hepatotrophic factor, and acts as a growth factor for a broad spectrum of tissues and cell types. Activating ligand for the receptor tyrosine kinase MET by binding to it and promoting its dimerization.
Involvement in disease	Deafness, autosomal recessive, 39
Sequence similarities	Belongs to the peptidase S1 family. Plasminogen subfamily. Contains 4 kringle domains. Contains 1 PAN domain. Contains 1 peptidase S1 domain.

Images



Anti-HGF antibody (ab24865) at 1 µg/ml + Recombinant human HGF protein (**ab105061**) at 0.1 µg

Secondary

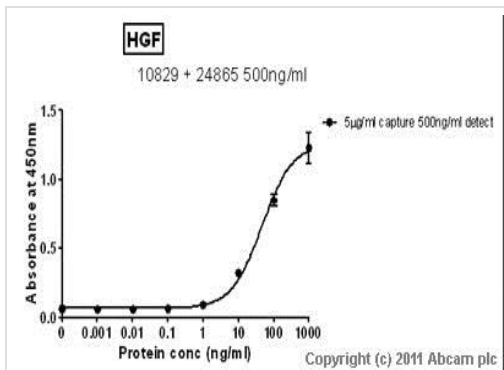
Goat Anti-Rabbit IgG H&L (HRP) preadsorbed (**ab97080**) at 1/5000 dilution

Developed using the ECL technique.

Performed under reducing conditions.

Predicted band size: 83 kDa

Exposure time: 1 minute



Sandwich ELISA - Anti-HGF antibody (ab24865)

Standard Curve for HGF (Analyte: **ab632**) dilution range 1pg/ml to 1ug/ml using Capture Antibody Mouse monoclonal [EGH2 4C12.1] to HGF (**ab10829**) at 5ug/ml and Detector Antibody Rabbit polyclonal to HGF (ab24865) at 0.5ug/ml.

Please note: All products are "FOR RESEARCH USE ONLY. NOT FOR USE IN DIAGNOSTIC PROCEDURES"

Our Abpromise to you: Quality guaranteed and expert technical support

- Replacement or refund for products not performing as stated on the datasheet
- Valid for 12 months from date of delivery
- Response to your inquiry within 24 hours
- We provide support in Chinese, English, French, German, Japanese and Spanish
- Extensive multi-media technical resources to help you
- We investigate all quality concerns to ensure our products perform to the highest standards

If the product does not perform as described on this datasheet, we will offer a refund or replacement. For full details of the Abpromise, please visit <https://www.abcam.com/abpromise> or contact our technical team.

Terms and conditions

- Guarantee only valid for products bought direct from Abcam or one of our authorized distributors