


## Product datasheet

### Anti-HIRA/HIR antibody ab20655

★★★★★ [3 Abreviews](#) [10 References](#) [1 Image](#)

#### Overview

<b>Product name</b>	Anti-HIRA/HIR antibody
<b>Description</b>	Rabbit polyclonal to HIRA/HIR
<b>Host species</b>	Rabbit
<b>Specificity</b>	ab20655 is able to recognise a band at 115kDa corresponding to the long isoform of HIRA/HIR and a band at 89kDa, corresponding to the short isoform of HIRA/HIR in HepG2 nuclear extract.
<b>Tested applications</b>	<b>Suitable for:</b> WB
<b>Species reactivity</b>	<b>Reacts with:</b> Human <b>Predicted to work with:</b> Mouse, Rat, Dog 
<b>Immunogen</b>	Synthetic peptide corresponding to Human HIRA/HIR aa 1000 to the C-terminus (C terminal) conjugated to keyhole limpet haemocyanin. Database link: <a href="#">P54198</a> (Peptide available as <a href="#">ab22456</a> , <a href="#">ab22457</a> )
<b>General notes</b>	<p>The Life Science industry has been in the grips of a reproducibility crisis for a number of years. Abcam is leading the way in addressing this with our range of recombinant monoclonal antibodies and knockout edited cell lines for gold-standard validation. Please check that this product meets your needs before purchasing.</p> <p>If you have any questions, special requirements or concerns, please send us an inquiry and/or contact our Support team ahead of purchase. Recommended alternatives for this product can be found below, along with publications, customer reviews and Q&amp;As</p>

#### Properties

<b>Form</b>	Liquid
<b>Storage instructions</b>	Shipped at 4°C. Store at +4°C short term (1-2 weeks). Upon delivery aliquot. Store at -20°C or -80°C. Avoid freeze / thaw cycle.
<b>Storage buffer</b>	pH: 7.40 Preservative: 0.02% Sodium azide Constituent: PBS
	Batches of this product that have a concentration < 1mg/ml may have BSA added as a stabilising agent. If you would like information about the formulation of a specific lot, please contact our scientific support team who will be happy to help.

<b>Purity</b>	Immunogen affinity purified
<b>Clonality</b>	Polyclonal
<b>Isotype</b>	IgG

## Applications

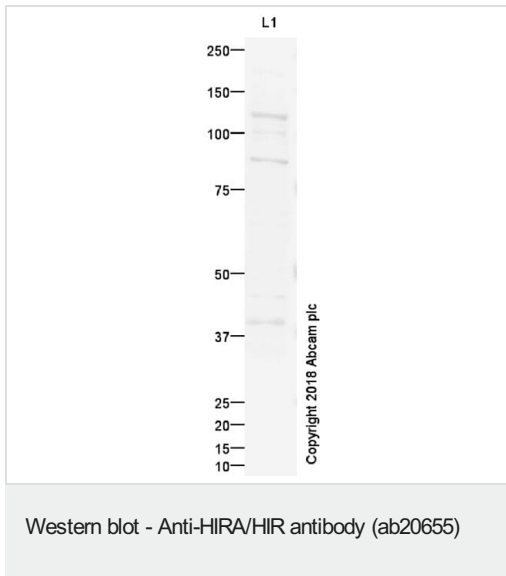
**The Abpromise guarantee** Our **Abpromise guarantee** covers the use of ab20655 in the following tested applications. The application notes include recommended starting dilutions; optimal dilutions/concentrations should be determined by the end user.

Application	Abreviews	Notes
<b>WB</b>	★★★★★ (2)	Use a concentration of 1 µg/ml. Detects a band of approximately 89 kDa (predicted molecular weight: 89 kDa). Detects a band of approximately 89 kDa, corresponding to the short isoform of HIRA/HIR.

## Target

<b>Function</b>	Cooperates with ASF1A to promote replication-independent chromatin assembly. Required for the periodic repression of histone gene transcription during the cell cycle. Required for the formation of senescence-associated heterochromatin foci (SAHF) and efficient senescence-associated cell cycle exit.
<b>Tissue specificity</b>	Expressed at high levels in kidney, pancreas and skeletal muscle and at lower levels in brain, heart, liver, lung, and placenta.
<b>Sequence similarities</b>	Belongs to the WD repeat HIR1 family. Contains 8 WD repeats.
<b>Developmental stage</b>	Expressed during embryogenesis.
<b>Post-translational modifications</b>	Sumoylated. Phosphorylated by CDK2/CCNA1 and CDK2/CCNE1 on Thr-555 in vitro. Also phosphorylated on Thr-555 and Ser-687 in vivo.
<b>Cellular localization</b>	Nucleus. Nucleus > PML body. Primarily, though not exclusively, localized to the nucleus. Localizes to PML bodies immediately prior to onset of senescence.

## Images



ab20655 at 10 µg + HepG2 nuclear extract lysate at 10 µg

### Secondary

IRDye 680 Conjugated Goat Anti-Rabbit IgG (H+L) at 1/10000 dilution

Developed using the ECL technique.

Performed under reducing conditions.

**Predicted band size:** 89 kDa

**Observed band size:** 115 kDa

**Additional bands at:** 89 kDa (possible isoform)

ab20655 is able to recognise a band at 115kDa corresponding to the long isoform of HIRA/HIR and a band at 89kDa, corresponding to the short isoform of HIRA/HIR.

**Please note:** All products are "FOR RESEARCH USE ONLY. NOT FOR USE IN DIAGNOSTIC PROCEDURES"

### Our Abpromise to you: Quality guaranteed and expert technical support

- Replacement or refund for products not performing as stated on the datasheet
- Valid for 12 months from date of delivery
- Response to your inquiry within 24 hours
- We provide support in Chinese, English, French, German, Japanese and Spanish
- Extensive multi-media technical resources to help you
- We investigate all quality concerns to ensure our products perform to the highest standards

If the product does not perform as described on this datasheet, we will offer a refund or replacement. For full details of the Abpromise, please visit <https://www.abcam.com/abpromise> or contact our technical team.

## Terms and conditions

---

- Guarantee only valid for products bought direct from Abcam or one of our authorized distributors