

## Product datasheet

# Anti-HIV1 Nef antibody [3F2] ab25866

★☆☆☆☆ [1 Abreviews](#) [6 References](#) [1 Image](#)

### Overview

---

<b>Product name</b>	Anti-HIV1 Nef antibody [3F2]
<b>Description</b>	Mouse monoclonal [3F2] to HIV1 Nef
<b>Host species</b>	Mouse
<b>Tested applications</b>	<b>Suitable for:</b> ELISA, WB, Radioimmunoprecipitation
<b>Species reactivity</b>	<b>Reacts with:</b> Human immunodeficiency virus
<b>Immunogen</b>	Recombinant full length protein
<b>Epitope</b>	Mapped to amino acids 31-35 (GAASR, HIV-1 HxB2).
<b>General notes</b>	<p>The Life Science industry has been in the grips of a reproducibility crisis for a number of years. Abcam is leading the way in addressing this with our range of recombinant monoclonal antibodies and knockout edited cell lines for gold-standard validation. Please check that this product meets your needs before purchasing.</p> <p>If you have any questions, special requirements or concerns, please send us an inquiry and/or contact our Support team ahead of purchase. Recommended alternatives for this product can be found below, along with publications, customer reviews and Q&amp;As</p>

### Properties

---

<b>Form</b>	Liquid
<b>Storage instructions</b>	Shipped at 4°C. Upon delivery aliquot and store at -20°C or -80°C. Avoid repeated freeze / thaw cycles.
<b>Storage buffer</b>	pH: 7.40 Preservative: 0.1% Sodium azide Constituent: PBS
<b>Purity</b>	Immunogen affinity purified
<b>Clonality</b>	Monoclonal
<b>Clone number</b>	3F2
<b>Isotype</b>	IgG1

### Applications

---

## The Abpromise guarantee

Our **Abpromise guarantee** covers the use of ab25866 in the following tested applications.

The application notes include recommended starting dilutions; optimal dilutions/concentrations should be determined by the end user.

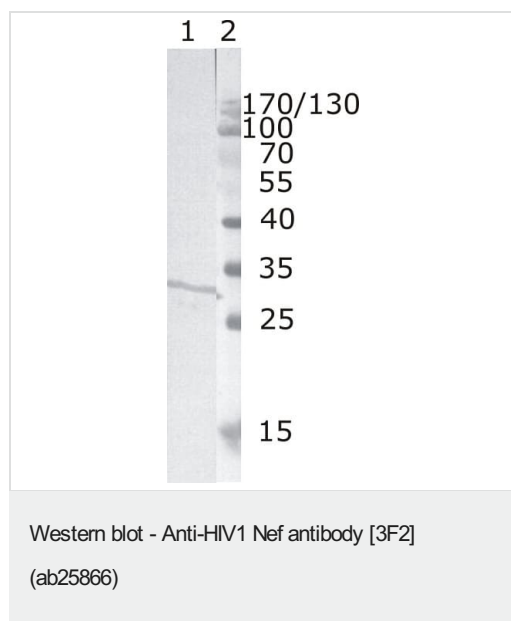
Application	Abreviews	Notes
ELISA		Use at an assay dependent dilution.
WB	★ ★ ★ ★ ★ (1)	Use at an assay dependent dilution. Predicted molecular weight: 23 kDa.
Radioimmunoprecipitation		Use at an assay dependent dilution.

## Target

### Relevance

Nef is a early protein that appears to play a role in optimizing the host cell environment for viral replication without causing cell death by apoptosis. Nef enhances virus infectivity and pathogenicity. It down modulates surface MHC I molecules and internalized molecules are sequestered to the trans-Golgi network. The number of cell surface CD4 antigen are decreased by interacting with the Src family kinase LCK thereby inducing LCK CD4 dissociation and by increasing clathrin-dependent endocytosis of this antigen to target it to lysosomal degradation.

## Images



**Lane 1 :** Anti-HIV1 Nef antibody [3F2] (ab25866)

**Lane 1 :** Recombinant HIV1 Nef (B subtype)

**Lane 2 :** Protein size marker

**Predicted band size:** 23 kDa

**Please note:** All products are "FOR RESEARCH USE ONLY. NOT FOR USE IN DIAGNOSTIC PROCEDURES"

## Our Abpromise to you: Quality guaranteed and expert technical support

- Replacement or refund for products not performing as stated on the datasheet
- Valid for 12 months from date of delivery
- Response to your inquiry within 24 hours

- We provide support in Chinese, English, French, German, Japanese and Spanish
- Extensive multi-media technical resources to help you
- We investigate all quality concerns to ensure our products perform to the highest standards

If the product does not perform as described on this datasheet, we will offer a refund or replacement. For full details of the Abpromise, please visit <https://www.abcam.com/abpromise> or contact our technical team.

### **Terms and conditions**

---

- Guarantee only valid for products bought direct from Abcam or one of our authorized distributors