

Product datasheet

Anti-HIV1 Nef antibody [JR6] ab42358

★★★★★ [5 Abreviews](#) [11 References](#) [1 Image](#)

Overview

Product name	Anti-HIV1 Nef antibody [JR6]
Description	Mouse monoclonal [JR6] to HIV1 Nef
Host species	Mouse
Tested applications	Suitable for: WB, ELISA
Species reactivity	Reacts with: Human immunodeficiency virus
Immunogen	Recombinant Nef protein of HIV1 (B subtype consensus).
Epitope	Mapped to amino acids 195-205 (ARELHPEYYKD - B subtype consensus)
General notes	<p>Also known as clone 01-009.</p> <p>The Life Science industry has been in the grips of a reproducibility crisis for a number of years. Abcam is leading the way in addressing this with our range of recombinant monoclonal antibodies and knockout edited cell lines for gold-standard validation. Please check that this product meets your needs before purchasing.</p> <p>If you have any questions, special requirements or concerns, please send us an inquiry and/or contact our Support team ahead of purchase. Recommended alternatives for this product can be found below, along with publications, customer reviews and Q&As</p>

Properties

Form	Liquid
Storage instructions	Shipped at 4°C. Upon delivery aliquot and store at -20°C or -80°C. Avoid repeated freeze / thaw cycles.
Storage buffer	<p>pH: 7.40</p> <p>Preservative: 0.1% Sodium azide</p> <p>Constituent: PBS</p>
Purity	Protein A purified
Purification notes	IgG fraction, purified by affinity chromatography.
Clonality	Monoclonal
Clone number	JR6
Isotype	IgG1

Applications

The Abpromise guarantee

Our **Abpromise guarantee** covers the use of ab42358 in the following tested applications.

The application notes include recommended starting dilutions; optimal dilutions/concentrations should be determined by the end user.

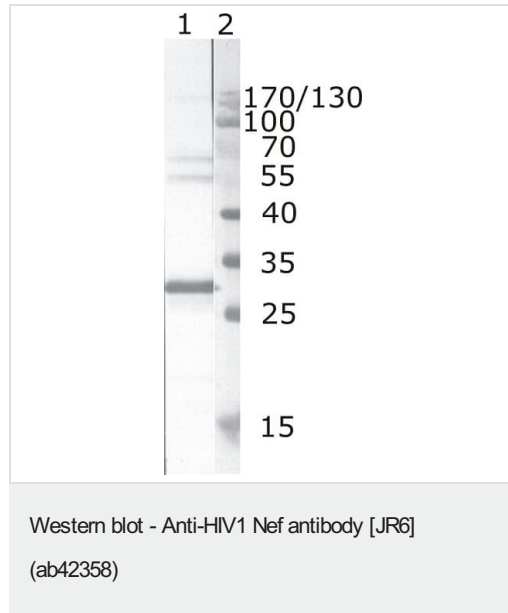
Application	Abreviews	Notes
WB	★★★★★ (1)	Use a concentration of 0.2 µg/ml. Predicted molecular weight: 24 kDa.
ELISA		Use a concentration of 0.02 - 1 µg/ml. Titer in ELISA/WB using rNEF of HIV 1 Subtype A.

Target

Relevance

Nef is a early protein that appears to play a role in optimizing the host cell environment for viral replication without causing cell death by apoptosis. Nef enhances virus infectivity and pathogenicity. It down modulates surface MHC I molecules and internalized molecules are sequestered to the trans-Golgi network. The number of cell surface CD4 antigen are decreased by interacting with the Src family kinase LCK thereby inducing LCK CD4 dissociation and by increasing clathrin-dependent endocytosis of this antigen to target it to lysosomal degradation.

Images



Lane 1 : Anti-HIV1 Nef antibody [JR6] (ab42358)

Lane 1 : Recombinant HIV1 Nef (B subtype)

Lane 2 : Protein size marker

Predicted band size: 24 kDa

Please note: All products are "FOR RESEARCH USE ONLY. NOT FOR USE IN DIAGNOSTIC PROCEDURES"

Our Abpromise to you: Quality guaranteed and expert technical support

- Replacement or refund for products not performing as stated on the datasheet
- Valid for 12 months from date of delivery

- Response to your inquiry within 24 hours
- We provide support in Chinese, English, French, German, Japanese and Spanish
- Extensive multi-media technical resources to help you
- We investigate all quality concerns to ensure our products perform to the highest standards

If the product does not perform as described on this datasheet, we will offer a refund or replacement. For full details of the Abpromise, please visit <https://www.abcam.com/abpromise> or contact our technical team.

Terms and conditions

- Guarantee only valid for products bought direct from Abcam or one of our authorized distributors