



Anti-HIV1 Rev antibody [10] ab25871

[2 References](#) [1 Image](#)

Overview

Product name	Anti-HIV1 Rev antibody [10]
Description	Mouse monoclonal [10] to HIV1 Rev
Host species	Mouse
Tested applications	Suitable for: ELISA, WB, Radioimmunoprecipitation
Species reactivity	Reacts with: Human immunodeficiency virus
Immunogen	<p>To produce this antibody the recombinant Rev (strain BRU) has been used as immunogen. The peptide sequences were not derived from particular strains of HIV1, but were designed as (artificial) B-clade (strain) consensus sequences. Sequences in Swiss prot belong to particular HIV1 strains. For epitope mapping synthetic peptides were used.</p> <p> Run BLAST with ExPASy  Run BLAST with NCBI</p>
Epitope	Epitope mapped to aa34-40
General notes	<p>The Life Science industry has been in the grips of a reproducibility crisis for a number of years. Abcam is leading the way in addressing this with our range of recombinant monoclonal antibodies and knockout edited cell lines for gold-standard validation. Please check that this product meets your needs before purchasing.</p> <p>If you have any questions, special requirements or concerns, please send us an inquiry and/or contact our Support team ahead of purchase. Recommended alternatives for this product can be found below, along with publications, customer reviews and Q&As</p>

Properties

Form	Liquid
Storage instructions	Shipped at 4°C. Upon delivery aliquot and store at -20°C or -80°C. Avoid repeated freeze / thaw cycles.
Storage buffer	<p>pH: 7.40</p> <p>Preservative: 0.1% Sodium azide</p> <p>Constituent: PBS</p>
Purity	Protein G purified
Clonality	Monoclonal
Clone number	10
Isotype	IgG1

Applications

The Abpromise guarantee

Our **Abpromise guarantee** covers the use of ab25871 in the following tested applications.

The application notes include recommended starting dilutions; optimal dilutions/concentrations should be determined by the end user.

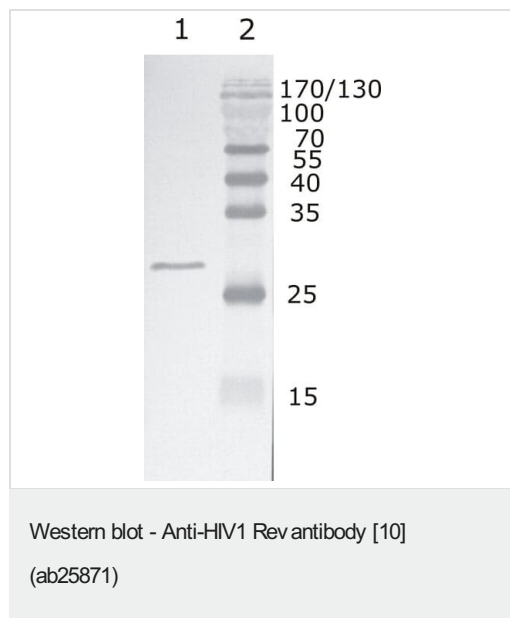
Application	Abreviews	Notes
ELISA		1/10000.
WB		1/500. Predicted molecular weight: 13 kDa.
Radioimmunoprecipitation		Use at an assay dependent dilution.

Target

Relevance

HIV1 expresses the trans-activator protein Rev which is required for virus growth as it promotes the localisation and expression of viral RNA in the cytoplasm. Rev is a model experimental system for studying nuclear transport. The HIV1 Rev protein as viral protein is expressed early in the virus life cycle and thus may be important targets for the immune control of HIV1 infection.

Images



Lane 1 : Anti-HIV1 Rev antibody [10] (ab25871)

Lane 1 : Recombinant HIV1 Rev (B subtype)

Lane 2 : Protein size marker

Predicted band size: 13 kDa

Please note: All products are "FOR RESEARCH USE ONLY. NOT FOR USE IN DIAGNOSTIC PROCEDURES"

Our Abpromise to you: Quality guaranteed and expert technical support

- Replacement or refund for products not performing as stated on the datasheet
- Valid for 12 months from date of delivery

- Response to your inquiry within 24 hours
- We provide support in Chinese, English, French, German, Japanese and Spanish
- Extensive multi-media technical resources to help you
- We investigate all quality concerns to ensure our products perform to the highest standards

If the product does not perform as described on this datasheet, we will offer a refund or replacement. For full details of the Abpromise, please visit <https://www.abcam.com/abpromise> or contact our technical team.

Terms and conditions

- Guarantee only valid for products bought direct from Abcam or one of our authorized distributors