

Product datasheet

Anti-HIV1 tat antibody [1] ab42359

[11 References](#) [1 Image](#)

Overview

Product name	Anti-HIV1 tat antibody [1]
Description	Mouse monoclonal [1] to HIV1 tat
Host species	Mouse
Specificity	This antibody reacts with the rTat consensus sequences of HIV1 subtypes A (DPVDPNLE), B (EPVDPRLE) and C (EPVDPNLE).
Tested applications	Suitable for: Radioimmunoprecipitation, IHC-P, ELISA, WB
Species reactivity	Reacts with: Human immunodeficiency virus
Immunogen	Recombinant fragment corresponding to HIV-1 HIV1 tat.
Epitope	Mapped to amino acids 2-9 (EPVDPRLE - B subtype consensus).
General notes	<p>Also known as clone 02-001.</p> <p>The Life Science industry has been in the grips of a reproducibility crisis for a number of years. Abcam is leading the way in addressing this with our range of recombinant monoclonal antibodies and knockout edited cell lines for gold-standard validation. Please check that this product meets your needs before purchasing.</p> <p>If you have any questions, special requirements or concerns, please send us an inquiry and/or contact our Support team ahead of purchase. Recommended alternatives for this product can be found below, along with publications, customer reviews and Q&As</p>

Properties

Form	Liquid
Storage instructions	Shipped at 4°C. Store at +4°C short term (1-2 weeks). Upon delivery aliquot. Store at -20°C or -80°C. Avoid freeze / thaw cycle.
Storage buffer	<p>pH: 7.40</p> <p>Preservative: 0.1% Sodium azide</p> <p>Constituent: PBS</p>
Purity	Protein G purified
Clonality	Monoclonal
Clone number	1
Isotype	IgG1

Applications

The Abpromise guarantee

Our **Abpromise guarantee** covers the use of ab42359 in the following tested applications.

The application notes include recommended starting dilutions; optimal dilutions/concentrations should be determined by the end user.

Application	Abreviews	Notes
Radioimmunoprecipitation		Use at an assay dependent concentration.
IHC-P		Use at an assay dependent concentration.
ELISA		Use a concentration of 0.02 - 0.05 µg/ml.
WB		Use a concentration of 1 - 2 µg/ml.

Target

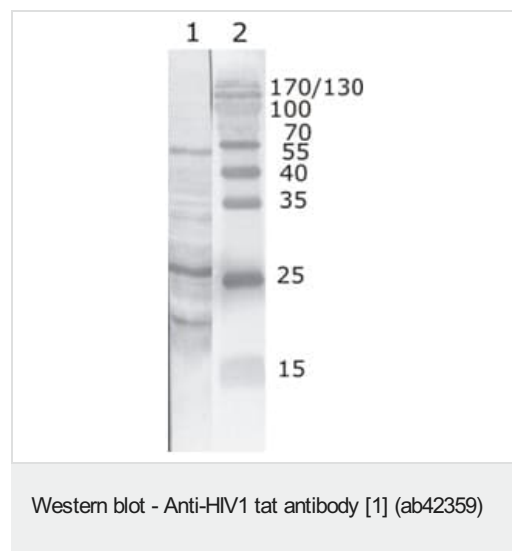
Relevance

HIV1 tat (Transactivator of Transcription) protein is a pleiotropic factor that induces a broad range of biological effects in numerous cell types. At the HIV promoter, tat is a powerful transactivator of gene expression which acts by inducing chromatin remodeling and by recruiting elongation-competent transcriptional complexes on to the viral LTR.

Cellular localization

Nuclear. Upon stimulation with EDN1, it is exported from the nucleus to the perinuclear region.

Images



Lane 1 : Anti-HIV1 tat antibody [1] (ab42359)

Lane 1 : Recombinant HIV1 Tat (B subtype)

Lane 2 : Protein size marker

Please note: All products are "FOR RESEARCH USE ONLY. NOT FOR USE IN DIAGNOSTIC PROCEDURES"

Our Abpromise to you: Quality guaranteed and expert technical support

- Replacement or refund for products not performing as stated on the datasheet
- Valid for 12 months from date of delivery

- Response to your inquiry within 24 hours
- We provide support in Chinese, English, French, German, Japanese and Spanish
- Extensive multi-media technical resources to help you
- We investigate all quality concerns to ensure our products perform to the highest standards

If the product does not perform as described on this datasheet, we will offer a refund or replacement. For full details of the Abpromise, please visit <https://www.abcam.com/abpromise> or contact our technical team.

Terms and conditions

- Guarantee only valid for products bought direct from Abcam or one of our authorized distributors