

Product datasheet

Anti-HIV1 tat antibody - ChIP Grade ab43014

★★★★☆ [4 Abreviews](#) [23 References](#) [1 Image](#)

Overview

Product name	Anti-HIV1 tat antibody - ChIP Grade
Description	Rabbit polyclonal to HIV1 tat
Host species	Rabbit
Tested applications	Suitable for: WB, EMSA
Species reactivity	Reacts with: Human immunodeficiency virus
Immunogen	Recombinant full length protein expressed in E.coli.
General notes	<p>The Life Science industry has been in the grips of a reproducibility crisis for a number of years. Abcam is leading the way in addressing this with our range of recombinant monoclonal antibodies and knockout edited cell lines for gold-standard validation. Please check that this product meets your needs before purchasing.</p> <p>If you have any questions, special requirements or concerns, please send us an inquiry and/or contact our Support team ahead of purchase. Recommended alternatives for this product can be found below, along with publications, customer reviews and Q&As</p>

Properties

Form	Liquid
Storage instructions	Shipped at 4°C. Store at +4°C short term (1-2 weeks). Upon delivery aliquot. Store at -20°C. Avoid freeze / thaw cycle.
Purity	Protein A purified
Clonality	Polyclonal
Isotype	IgG

Applications

The Abpromise guarantee Our **Abpromise guarantee** covers the use of ab43014 in the following tested applications. The application notes include recommended starting dilutions; optimal dilutions/concentrations should be determined by the end user.

Application	Abreviews	Notes
WB	★★★★★ (4)	Use at an assay dependent concentration.
EMSA		Use at an assay dependent concentration.

Target

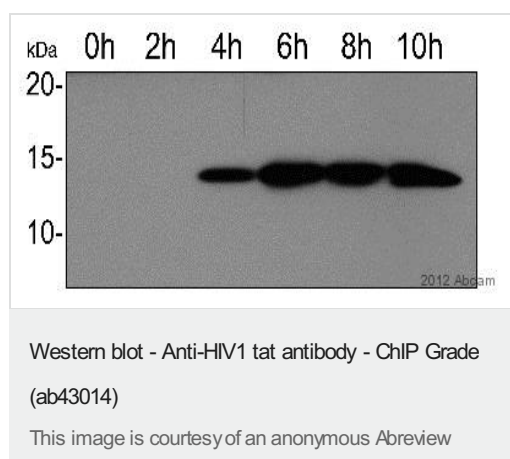
Relevance

HIV1 tat (Transactivator of Transcription) protein is a pleiotropic factor that induces a broad range of biological effects in numerous cell types. At the HIV promoter, tat is a powerful transactivator of gene expression which acts by inducing chromatin remodeling and by recruiting elongation-competent transcriptional complexes on to the viral LTR.

Cellular localization

Nuclear. Upon stimulation with EDN1, it is exported from the nucleus to the perinuclear region.

Images



All lanes : Anti-HIV1 tat antibody - ChIP Grade (ab43014) at 1/2000 dilution

Lane 1 : Jurkat whole cell lysate 0 hours after infection

Lane 2 : Jurkat whole cell lysate 2 hours after infection

Lane 3 : Jurkat whole cell lysate 4 hours after infection

Lane 4 : Jurkat whole cell lysate 6 hours after infection

Lane 5 : Jurkat whole cell lysate 8 hours after infection

Lane 6 : Jurkat whole cell lysate 10 hours after infection

Lysates/proteins at 25 µg per lane.

Secondary

All lanes : HRP Goat anti-rabbit IgG polyclonal at 1/10000 dilution

Developed using the ECL technique.

Performed under reducing conditions.

Observed band size: 14 kDa

Jurkat cells were pNL4.3 infected and samples taken at 2 hour intervals for blotting.

Please note: All products are "FOR RESEARCH USE ONLY. NOT FOR USE IN DIAGNOSTIC PROCEDURES"

Our Abpromise to you: Quality guaranteed and expert technical support

- Replacement or refund for products not performing as stated on the datasheet
- Valid for 12 months from date of delivery
- Response to your inquiry within 24 hours
- We provide support in Chinese, English, French, German, Japanese and Spanish
- Extensive multi-media technical resources to help you
- We investigate all quality concerns to ensure our products perform to the highest standards

If the product does not perform as described on this datasheet, we will offer a refund or replacement. For full details of the Abpromise, please visit <https://www.abcam.com/abpromise> or contact our technical team.

Terms and conditions

- Guarantee only valid for products bought direct from Abcam or one of our authorized distributors