

Product datasheet

Anti-HLA B7 antibody [BB7.1] ab20169

[1 References](#) [1 Image](#)

Overview

Product name	Anti-HLA B7 antibody [BB7.1]
Description	Mouse monoclonal [BB7.1] to HLA B7
Host species	Mouse
Tested applications	Suitable for: Flow Cyt
Species reactivity	Reacts with: Human, Monkey
Immunogen	Full length protein corresponding to Human HLA B7. Papain solubilised HLA-A2, B7
General notes	

Human Leukocyte Antigens are highly polymorphic proteins that are involved in the presentation of antigens to the T-cell receptor. There are two classes of HLA antigens, class I (HLA-A, HLA-B and HLA-C) and class II (HLA-D). This antibody can be used for HLA typing.

The Life Science industry has been in the grips of a reproducibility crisis for a number of years. Abcam is leading the way in addressing this with our range of recombinant monoclonal antibodies and knockout edited cell lines for gold-standard validation. Please check that this product meets your needs before purchasing.

If you have any questions, special requirements or concerns, please send us an inquiry and/or contact our Support team ahead of purchase. Recommended alternatives for this product can be found below, along with publications, customer reviews and Q&As

Properties

Form	Liquid
Storage instructions	Shipped at 4°C. Store at +4°C short term (1-2 weeks). Upon delivery aliquot. Store at -20°C or -80°C. Avoid freeze / thaw cycle.
Storage buffer	Preservative: 0.02% Sodium azide Constituent: 99.98% PBS
Purity	Protein G purified
Primary antibody notes	Human Leukocyte Antigens are highly polymorphic proteins that are involved in the presentation of antigens to the T-cell receptor. There are two classes of HLA antigens, class I (HLA-A, HLA-B and HLA-C) and class II (HLA-D). This antibody can be used for HLA typing.
Clonality	Monoclonal

Clone number	BB7.1
Myeloma	NS1
Isotype	IgG1
Light chain type	unknown

Applications

The Abpromise guarantee Our **Abpromise guarantee** covers the use of ab20169 in the following tested applications. The application notes include recommended starting dilutions; optimal dilutions/concentrations should be determined by the end user.

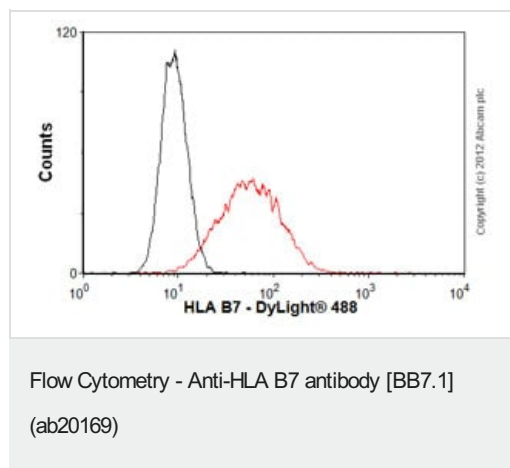
Application	Abreviews	Notes
Flow Cyt		1/10. Neat - 1/10. ab170190 - Mouse monoclonal IgG1, is suitable for use as an isotype control with this antibody.

Target

Relevance HLA B belongs to the HLA class I heavy chain paralogues. This class I molecule is a heterodimer consisting of a heavy chain and a light chain (beta 2 microglobulin). The heavy chain is anchored in the membrane. Class I molecules play a central role in the immune system by presenting peptides derived from the endoplasmic reticulum lumen. They are expressed in nearly all cells. The heavy chain is approximately 45 kDa. Hundreds of HLA B alleles have been described.

Cellular localization Cell Membrane, single pass type I membrane protein.

Images



Overlay histogram showing Jurkat cells stained with ab20169 (red line). The cells were fixed with 4% paraformaldehyde (10 min) and then permeabilized with 0.1% PBS-Tween for 20 min. The cells were then incubated in 1x PBS / 10% normal goat serum / 0.3M glycine to block non-specific protein-protein interactions followed by the antibody (a20169, 2µg/1x10⁶ cells) for 30 min at 22°C. The secondary antibody used was DyLight® 488 goat anti-mouse IgG (H+L) ([ab96879](#)) at 1/500 dilution for 30 min at 22°C. Isotype control antibody (black line) was mouse IgG1 [ICIGG1] ([ab91353](#), 2µg/1x10⁶ cells) used under the same conditions. Acquisition of >5,000 events was performed.

Please note: All products are "FOR RESEARCH USE ONLY. NOT FOR USE IN DIAGNOSTIC PROCEDURES"

Our Abpromise to you: Quality guaranteed and expert technical support

- Replacement or refund for products not performing as stated on the datasheet
- Valid for 12 months from date of delivery
- Response to your inquiry within 24 hours

- We provide support in Chinese, English, French, German, Japanese and Spanish
- Extensive multi-media technical resources to help you
- We investigate all quality concerns to ensure our products perform to the highest standards

If the product does not perform as described on this datasheet, we will offer a refund or replacement. For full details of the Abpromise, please visit <https://www.abcam.com/abpromise> or contact our technical team.

Terms and conditions

- Guarantee only valid for products bought direct from Abcam or one of our authorized distributors