

Product datasheet

Anti-HLA B7 antibody [EPR2623(2)] αb109089

Recombinant RabMAb

3 Images

Overview

Product name	Anti-HLA B7 antibody [EPR2623(2)]
Description	Rabbit monoclonal [EPR2623(2)] to HLA B7
Host species	Rabbit
Tested applications	Suitable for: WB, IHC-P Unsuitable for: Flow Cyt, ICC/IF or IP
Species reactivity	Reacts with: Human
Immunogen	Synthetic peptide. This information is proprietary to Abcam and/or its suppliers.
Positive control	Jurkat, HL60, TF1, and Ramos cell lysates; Human tonsil tissue.
General notes	<p>This product is a recombinant monoclonal antibody, which offers several advantages including:</p> <ul style="list-style-type: none"> - High batch-to-batch consistency and reproducibility - Improved sensitivity and specificity - Long-term security of supply - Animal-free production <p>For more information see here.</p> <p>Our RabMAb[®] technology is a patented hybridoma-based technology for making rabbit monoclonal antibodies. For details on our patents, please refer to RabMAb[®] patents.</p> <p>Mouse, Rat: We have preliminary internal testing data to indicate this antibody may not react with these species. Please contact us for more information.</p>

Properties

Form	Liquid
Storage instructions	Shipped at 4°C. Store at -20°C. Stable for 12 months at -20°C.
Storage buffer	<p>pH: 7.20</p> <p>Preservative: 0.05% Sodium azide</p> <p>Constituents: 0.1% BSA, 40% Glycerol (glycerin, glycerine), 9.85% Tris glycine, 50% PBS</p>
Purity	Protein A purified
Clonality	Monoclonal
Clone number	EPR2623(2)

Isotype IgG

Applications

The Abpromise guarantee Our **Abpromise guarantee** covers the use of ab109089 in the following tested applications. The application notes include recommended starting dilutions; optimal dilutions/concentrations should be determined by the end user.

Application	Abreviews	Notes
WB		1/1000 - 1/10000. Predicted molecular weight: 40 kDa.
IHC-P		1/250 - 1/500. Perform heat mediated antigen retrieval with citrate buffer pH 6 before commencing with IHC staining protocol. Antigen retrieval is recommended.

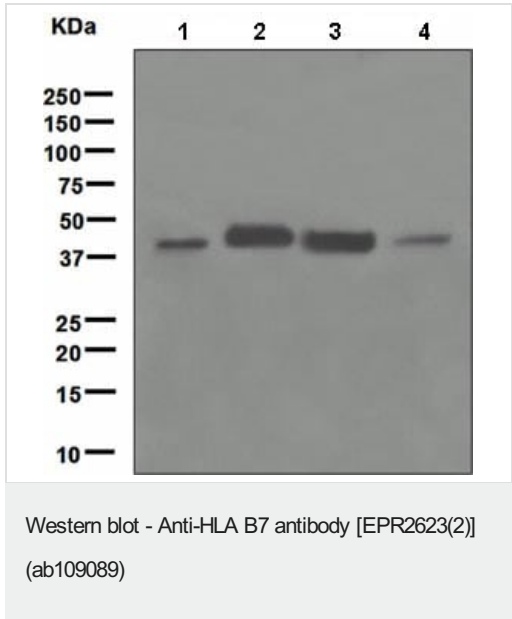
Application notes Is unsuitable for Flow Cyt,ICC/IF or IP.

Target

Relevance HLA B belongs to the HLA class I heavy chain paralogues. This class I molecule is a heterodimer consisting of a heavy chain and a light chain (beta 2 microglobulin). The heavy chain is anchored in the membrane. Class I molecules play a central role in the immune system by presenting peptides derived from the endoplasmic reticulum lumen. They are expressed in nearly all cells. The heavy chain is approximately 45 kDa. Hundreds of HLA B alleles have been described.

Cellular localization Cell Membrane, single pass type I membrane protein.

Images

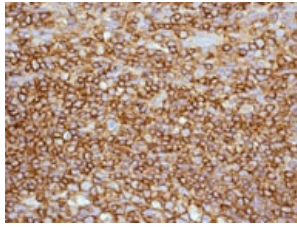


All lanes : Anti-HLA B7 antibody [EPR2623(2)] (ab109089) at 1/1000 dilution

- Lane 1 :** Jurkat Ramos cell lysate
- Lane 2 :** HL60 cell lysate
- Lane 3 :** TF1 cell lysate
- Lane 4 :** Ramos cell lysate

Lysates/proteins at 10 µg per lane.

Predicted band size: 40 kDa



Immunohistochemistry (Formalin/PFA-fixed paraffin-embedded sections) - Anti-HLA B7 antibody [EPR2623(2)] (ab109089)

ab109089 at 1/250 dilution staining HLA B7 in Human tonsil by Immunohistochemistry, Paraffin-embedded tissue.

Perform heat mediated antigen retrieval with citrate buffer pH 6 before commencing with IHC staining protocol.

Why choose a recombinant antibody?



Research with confidence
Consistent and reproducible results



Long-term and scalable supply
Recombinant technology



Success from the first experiment
Confirmed specificity



Ethical standards compliant
Animal-free production

Anti-HLA B7 antibody [EPR2623(2)] (ab109089)

Please note: All products are "FOR RESEARCH USE ONLY. NOT FOR USE IN DIAGNOSTIC PROCEDURES"

Our Abpromise to you: Quality guaranteed and expert technical support

- Replacement or refund for products not performing as stated on the datasheet
- Valid for 12 months from date of delivery
- Response to your inquiry within 24 hours
- We provide support in Chinese, English, French, German, Japanese and Spanish
- Extensive multi-media technical resources to help you
- We investigate all quality concerns to ensure our products perform to the highest standards

If the product does not perform as described on this datasheet, we will offer a refund or replacement. For full details of the Abpromise, please visit <https://www.abcam.com/abpromise> or contact our technical team.

Terms and conditions

- Guarantee only valid for products bought direct from Abcam or one of our authorized distributors