



Product datasheet

Anti-HLA-C antibody ab232903

8 Images

Overview

Product name	Anti-HLA-C antibody
Description	Rabbit polyclonal to HLA-C
Host species	Rabbit
Tested applications	Suitable for: IHC-P, WB
Species reactivity	Reacts with: Human, Pig
Immunogen	Recombinant fragment (His-T7-tag) corresponding to Human HLA-C aa 1-350. (Expressed in E.coli). Database link: P10321
	<div>  Run BLAST with  Run BLAST with </div>
Positive control	WB: Recombinant human HLA-C protein; Human lymphocyte lysate; A431 cell lysate; Pig liver lysate. IHC-P: Human lung cancer, liver, kidney, prostate, skin cancer and stomach tissues.
General notes	<p>The Life Science industry has been in the grips of a reproducibility crisis for a number of years. Abcam is leading the way in addressing this with our range of recombinant monoclonal antibodies and knockout edited cell lines for gold-standard validation. Please check that this product meets your needs before purchasing.</p> <p>If you have any questions, special requirements or concerns, please send us an inquiry and/or contact our Support team ahead of purchase. Recommended alternatives for this product can be found below, along with publications, customer reviews and Q&As</p>

Properties

Form	Liquid
Storage instructions	Shipped at 4°C. Store at +4°C short term (1-2 weeks). Upon delivery aliquot. Store at -20°C long term. Avoid freeze / thaw cycle.
Storage buffer	pH: 7.40 Preservative: 0.011% Proclin 300 Constituents: 55.77% Glycerol (glycerin, glycerine), 44.219% PBS
Purity	Immunogen affinity purified
Purification notes	ab232903 was purified by antigen-specific affinity chromatography followed by Protein A affinity chromatography.
Clonality	Polyclonal

Isotype

IgG

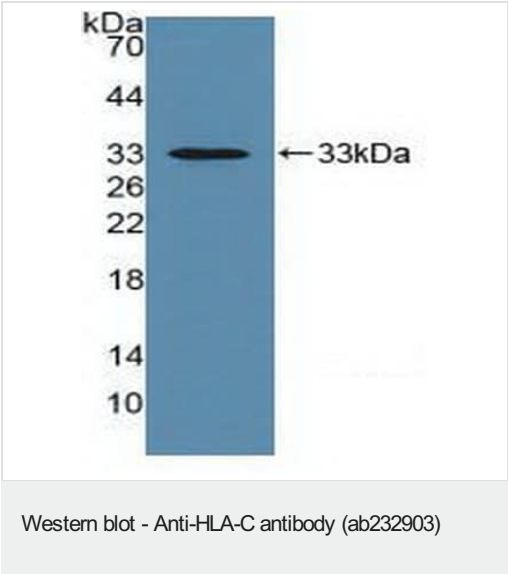
Applications

The Abpromise guarantee Our **Abpromise guarantee** covers the use of ab232903 in the following tested applications. The application notes include recommended starting dilutions; optimal dilutions/concentrations should be determined by the end user.

Application	Abreviews	Notes
IHC-P		Use a concentration of 5 - 20 µg/ml.
WB		Use a concentration of 1 - 5 µg/ml. Predicted molecular weight: 41 kDa.

Target

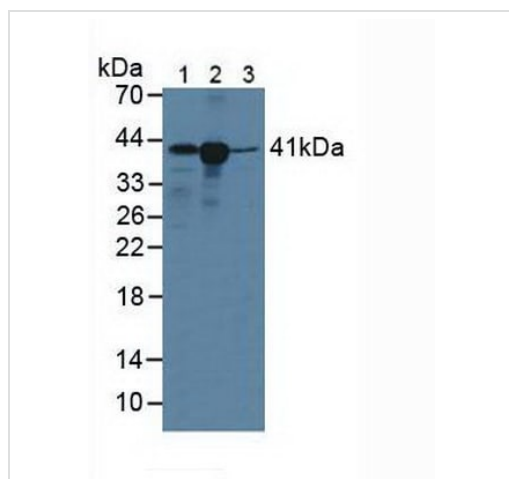
Images



Anti-HLA-C antibody (ab232903) at 2 µg/ml + Recombinant human HLA-C protein

Secondary
HRP-Linked Guinea pig anti-Rabbit at 1/2000 dilution

Predicted band size: 41 kDa



Western blot - Anti-HLA-C antibody (ab232903)

All lanes : Anti-HLA-C antibody (ab232903) at 2 µg/ml

Lane 1 : Human lymphocyte lysate

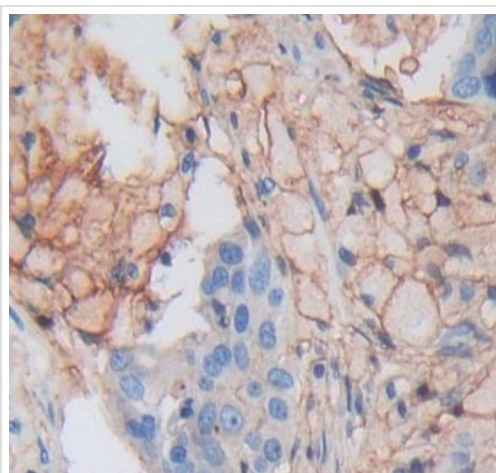
Lane 2 : A431 (human epidermoid carcinoma cell line) cell lysate

Lane 3 : Pig liver lysate

Secondary

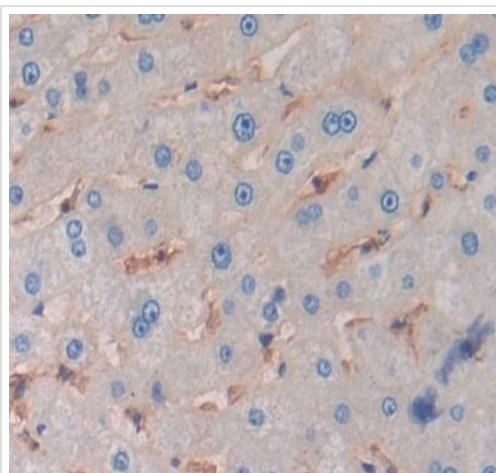
All lanes : HRP-Linked Guinea pig anti-Rabbit at 1/2000 dilution

Predicted band size: 41 kDa



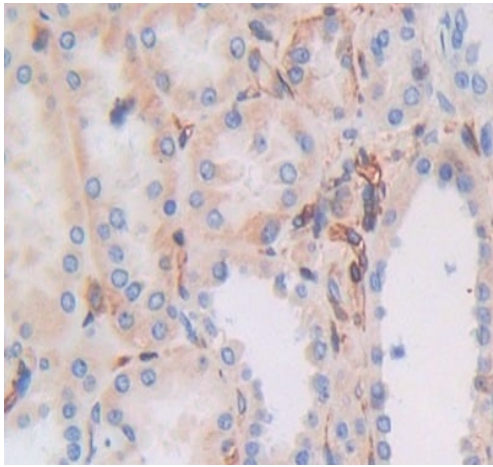
Immunohistochemistry (Formalin/PFA-fixed paraffin-embedded sections) - Anti-HLA-C antibody (ab232903)

Paraffin-embedded human lung cancer tissue stained for HLA-C using ab232903 at 20 µg/ml in immunohistochemical analysis. DAB staining.



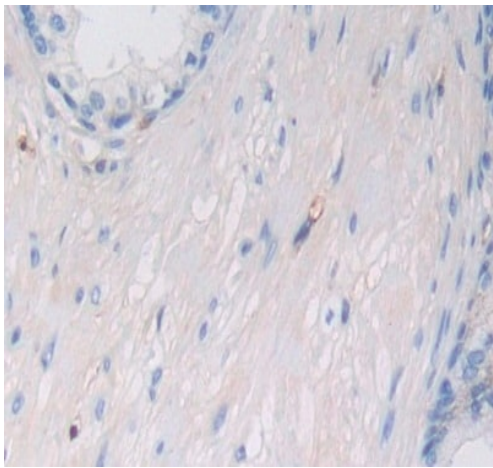
Immunohistochemistry (Formalin/PFA-fixed paraffin-embedded sections) - Anti-HLA-C antibody (ab232903)

Paraffin-embedded human liver tissue stained for HLA-C using ab232903 at 20 µg/ml in immunohistochemical analysis. DAB staining.



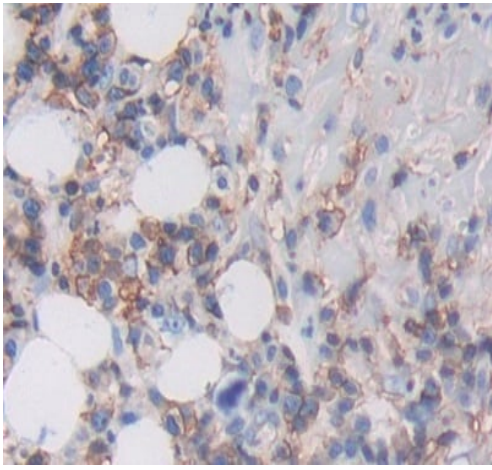
Paraffin-embedded human kidney tissue stained for HLA-C using ab232903 at 20 µg/ml in immunohistochemical analysis. DAB staining.

Immunohistochemistry (Formalin/PFA-fixed paraffin-embedded sections) - Anti-HLA-C antibody (ab232903)



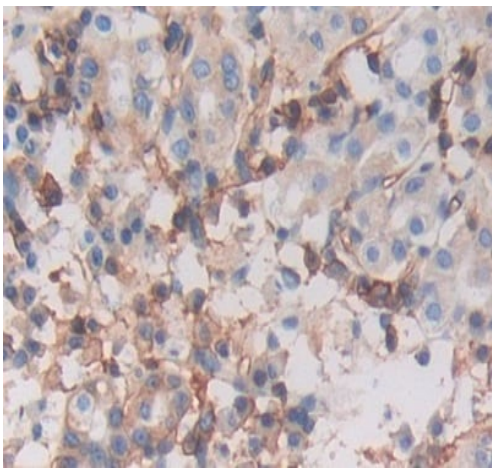
Paraffin-embedded human prostate tissue stained for HLA-C using ab232903 at 20 µg/ml in immunohistochemical analysis. DAB staining.

Immunohistochemistry (Formalin/PFA-fixed paraffin-embedded sections) - Anti-HLA-C antibody (ab232903)



Immunohistochemistry (Formalin/PFA-fixed paraffin-embedded sections) - Anti-HLA-C antibody (ab232903)

Paraffin-embedded human skin cancer tissue stained for HLA-C using ab232903 at 20 µg/ml in immunohistochemical analysis. DAB staining.



Immunohistochemistry (Formalin/PFA-fixed paraffin-embedded sections) - Anti-HLA-C antibody (ab232903)

Paraffin-embedded human stomach tissue stained for HLA-C using ab232903 at 20 µg/ml in immunohistochemical analysis. DAB staining.

Please note: All products are "FOR RESEARCH USE ONLY. NOT FOR USE IN DIAGNOSTIC PROCEDURES"

Our Abpromise to you: Quality guaranteed and expert technical support

- Replacement or refund for products not performing as stated on the datasheet
- Valid for 12 months from date of delivery
- Response to your inquiry within 24 hours
- We provide support in Chinese, English, French, German, Japanese and Spanish
- Extensive multi-media technical resources to help you
- We investigate all quality concerns to ensure our products perform to the highest standards

If the product does not perform as described on this datasheet, we will offer a refund or replacement. For full details of the Abpromise,

please visit <https://www.abcam.com/abpromise> or contact our technical team.

Terms and conditions

- Guarantee only valid for products bought direct from Abcam or one of our authorized distributors