

Anti-HLA Class 1 ABC antibody [EMR8-5] ab70328

★★★★★ [19 Abreviews](#) [141 References](#) [4 Images](#)

Overview

Product name	Anti-HLA Class 1 ABC antibody [EMR8-5]
Description	Mouse monoclonal [EMR8-5] to HLA Class 1 ABC
Host species	Mouse
Specificity	ab70328 reacts with the heavy chains of human HLA class 1 A, -B, and -C.
Tested applications	Suitable for: Flow Cyt, IHC-P, WB
Species reactivity	Reacts with: Human, Recombinant fragment
Immunogen	Recombinant full length protein corresponding to HLA Class 1 ABC. Recombinant HLA-A*2402 extracellular domain
Positive control	IHC-P: Human tonsil tissue sections
General notes	<p>The Life Science industry has been in the grips of a reproducibility crisis for a number of years. Abcam is leading the way in addressing this with our range of recombinant monoclonal antibodies and knockout edited cell lines for gold-standard validation. Please check that this product meets your needs before purchasing.</p> <p>If you have any questions, special requirements or concerns, please send us an inquiry and/or contact our Support team ahead of purchase. Recommended alternatives for this product can be found below, along with publications, customer reviews and Q&As</p>

Properties

Form	Liquid
Storage instructions	Shipped at 4°C. Store at +4°C short term (1-2 weeks). Upon delivery aliquot. Store at -20°C long term.
Storage buffer	pH: 7.40 Preservative: 0.05% Sodium azide Constituent: PBS
Purity	Protein A purified
Clonality	Monoclonal
Clone number	EMR8-5
Myeloma	NS1
Isotype	IgG1

Light chain type

kappa

Applications

The Abpromise guarantee

Our **Abpromise guarantee** covers the use of ab70328 in the following tested applications.

The application notes include recommended starting dilutions; optimal dilutions/concentrations should be determined by the end user.

Application	Abreviews	Notes
Flow Cyt	★ ★ ★ ★ ★ (1)	Use 1-2µg for 10 ⁶ cells. (methanol or paraformaldehyde fixed cells) ab170190 - Mouse monoclonal IgG1, is suitable for use as an isotype control with this antibody.
IHC-P	★ ★ ★ ★ ★ (9)	Use a concentration of 0.05 µg/ml. Perform heat mediated antigen retrieval with citrate buffer pH 6 before commencing with IHC staining protocol.
WB	★ ★ ★ ★ ★ (2)	Use at an assay dependent concentration.

Target

Relevance

HLA-ABC antigen is present on most nucleated cells of humans and Old World monkeys. HLA Class I is involved in the presentation of foreign antigens to the immune system.

Cellular localization

Cell Membrane; Single-pass type I membrane protein

Images



All lanes : Anti-HLA Class 1 ABC antibody [EMR8-5] (ab70328)

Lane 1 : A*2402

Lane 2 : A*0101

Lane 3 : A*1101

Lane 4 : A*0201

Lane 5 : A*0207

Lane 6 : A2402

Lane 7 : B*0702

Lane 8 : B*0801

Lane 9 : B*1501

Lane 10 : B*3501

Lane 11 : B*4001

Lane 12 : B*4002

Lane 13 : B*4006

Lane 14 : B*4403

Lane 15 : Cw*0102

Lane 16 : Cw*0801

Lane 17 : Cw*1202

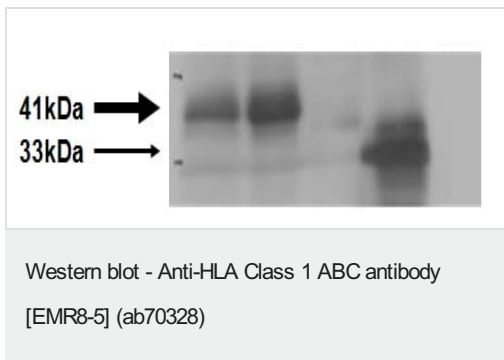
Lane 18 : Cw*1502

Western blot analysis of ab70328 reactivity using recombinant HLA heavy chains.

Lanes 1-6: HLA-A

Lanes 7-14: HLA-B

Lanes 15-18: HLA-C



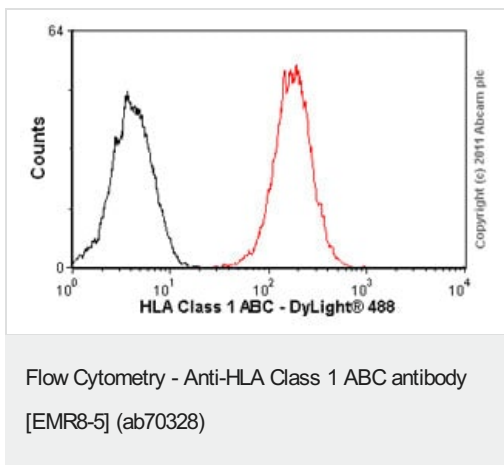
All lanes : Anti-HLA Class 1 ABC antibody [EMR8-5] (ab70328)

Lane 1 : Human oral cancer cell line OSC20

Lane 2 : HLA-A2402 gene transfected OSC20

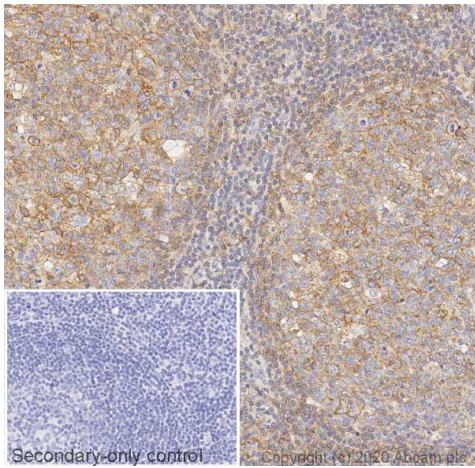
Lane 3 : Human Leukemia cell line K562

Lane 4 : Recombinant HLA-A2402 heavy chain



Overlay histogram showing Jurkat cells stained with ab70328 (red line). The cells were fixed with methanol (5 min) and incubated in 1x PBS / 10% normal goat serum / 0.3M glycine to block non-specific protein-protein interactions. The cells were then incubated with the antibody (ab70328, 1µg/1x10⁶ cells) for 30 min at 22°C. The secondary antibody used was DyLight® 488 goat anti-mouse IgG (H+L) ([ab96879](#)) at 1/500 dilution for 30 min at 22°C. Isotype control antibody (black line) was mouse IgG1 [C1GG1] ([ab91353](#), 2µg/1x10⁶ cells) used under the same conditions. Acquisition of >5,000 events was performed. This antibody gave a positive signal in Jurkat cells fixed with 4% paraformaldehyde (10 min) used under the same conditions.

Please note that Abcam do not have data for use of this antibody on non-fixed cells. We welcome any customer feedback.



Immunohistochemistry (Formalin/PFA-fixed paraffin-embedded sections) - Anti-HLA Class 1 ABC antibody [EMR8-5] (ab70328)

IHC image of HLA Class 1 ABC staining in a section of formalin-fixed paraffin-embedded normal human tonsil* performed on a Leica BOND™ system using the standard protocol. The section was pre-treated using heat mediated antigen retrieval with sodium citrate buffer (pH6, epitope retrieval solution 1) for 20mins. The section was then incubated with ab70328, 0.05ug/ml, for 15 mins at room temperature and detected using an HRP conjugated compact polymer system. DAB was used as the chromogen. The section was then counterstained with haematoxylin and mounted with DPX. The inset secondary-only control image is taken from an identical assay without primary antibody.

For other IHC staining systems (automated and non-automated) customers should optimize variable parameters such as antigen retrieval conditions, primary antibody concentration and antibody incubation times.

Please note: All products are "FOR RESEARCH USE ONLY. NOT FOR USE IN DIAGNOSTIC PROCEDURES"

Our Abpromise to you: Quality guaranteed and expert technical support

- Replacement or refund for products not performing as stated on the datasheet
- Valid for 12 months from date of delivery
- Response to your inquiry within 24 hours
- We provide support in Chinese, English, French, German, Japanese and Spanish
- Extensive multi-media technical resources to help you
- We investigate all quality concerns to ensure our products perform to the highest standards

If the product does not perform as described on this datasheet, we will offer a refund or replacement. For full details of the Abpromise, please visit <https://www.abcam.com/abpromise> or contact our technical team.

Terms and conditions

- Guarantee only valid for products bought direct from Abcam or one of our authorized distributors