

Product datasheet

Anti-HLA-DQ antibody [B-K27] - BSA and Azide free ab47342

[1 Image](#)

Overview

Product name	Anti-HLA-DQ antibody [B-K27] - BSA and Azide free
Description	Mouse monoclonal [B-K27] to HLA-DQ - BSA and Azide free
Host species	Mouse
Specificity	ab47342 recognises both a 28 kDa and 33 kDa complex.
Tested applications	Suitable for: Flow Cyt
Species reactivity	Reacts with: Human
Immunogen	Tissue, cells or virus corresponding to Human HLA-DQ. T4+ CTL clone HG-38
Positive control	Human lymphocytes
General notes	<p>The Life Science industry has been in the grips of a reproducibility crisis for a number of years. Abcam is leading the way in addressing this with our range of recombinant monoclonal antibodies and knockout edited cell lines for gold-standard validation. Please check that this product meets your needs before purchasing.</p> <p>If you have any questions, special requirements or concerns, please send us an inquiry and/or contact our Support team ahead of purchase. Recommended alternatives for this product can be found below, along with publications, customer reviews and Q&As</p>

Properties

Form	Liquid
Storage instructions	Shipped at 4°C. Store at +4°C short term (1-2 weeks). Upon delivery aliquot. Store at -20°C or -80°C. Avoid freeze / thaw cycle.
Storage buffer	pH: 7.30 Constituent: 100% PBS
Carrier free	Yes
Purity	Ion Exchange Chromatography
Clonality	Monoclonal
Clone number	B-K27

Myeloma	x63-Ag8.653
Isotype	IgG2a
Light chain type	kappa

Applications

The Abpromise guarantee Our **Abpromise guarantee** covers the use of ab47342 in the following tested applications. The application notes include recommended starting dilutions; optimal dilutions/concentrations should be determined by the end user.

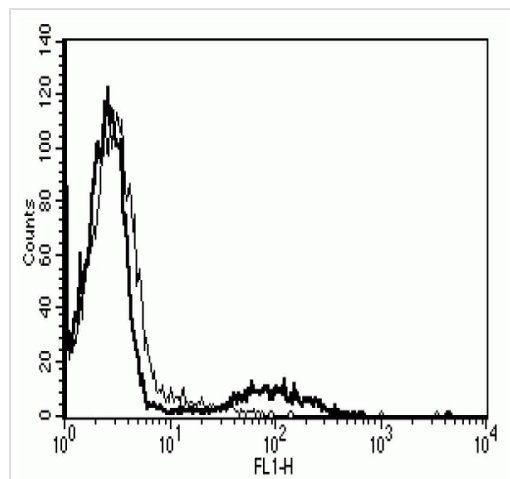
Application	Abreviews	Notes
Flow Cyt		Use at an assay dependent concentration. ab170191 - Mouse monoclonal IgG2a, is suitable for use as an isotype control with this antibody.

Target

Relevance Human Leukocyte Antigens are highly polymorphic proteins that are involved in the presentation of antigens to the T-cell receptor. There are two classes of HLA antigens: class I (HLA A, HLA B and HLA C) and class II (HLA D).

Cellular localization Type I membrane protein

Images



Flow Cytometry analysis of lymphocytes labeling HLA-DQ with ab47342.

Flow Cytometry - Anti-HLA-DQ antibody [B-K27] - BSA and Azide free (ab47342)

Please note: All products are "FOR RESEARCH USE ONLY. NOT FOR USE IN DIAGNOSTIC PROCEDURES"

Our Abpromise to you: Quality guaranteed and expert technical support

- Replacement or refund for products not performing as stated on the datasheet
- Valid for 12 months from date of delivery
- Response to your inquiry within 24 hours

- We provide support in Chinese, English, French, German, Japanese and Spanish
- Extensive multi-media technical resources to help you
- We investigate all quality concerns to ensure our products perform to the highest standards

If the product does not perform as described on this datasheet, we will offer a refund or replacement. For full details of the Abpromise, please visit <https://www.abcam.com/abpromise> or contact our technical team.

Terms and conditions

- Guarantee only valid for products bought direct from Abcam or one of our authorized distributors