



Product datasheet

Anti-HLA G antibody [4H84] ab52455

★★★★★ 6 Abreviews 32 References 1 Image

Overview

Product name	Anti-HLA G antibody [4H84]
Description	Mouse monoclonal [4H84] to HLA G
Host species	Mouse
Tested applications	Suitable for: IHC-P, WB
Species reactivity	Reacts with: Human
Immunogen	Synthetic peptide corresponding to Human HLA G aa 61-83. Sequence: DSDSACPRMEPRAPWVEQEGPEY  Run BLAST with  Run BLAST with
Positive control	WB: JEG-3 cell line.
General notes	<p>The Life Science industry has been in the grips of a reproducibility crisis for a number of years. Abcam is leading the way in addressing this with our range of recombinant monoclonal antibodies and knockout edited cell lines for gold-standard validation. Please check that this product meets your needs before purchasing.</p> <p>If you have any questions, special requirements or concerns, please send us an inquiry and/or contact our Support team ahead of purchase. Recommended alternatives for this product can be found below, along with publications, customer reviews and Q&As</p>

Properties

Form	Liquid
Storage instructions	Shipped at 4°C. Store at +4°C short term (1-2 weeks). Upon delivery aliquot. Store at -20°C or -80°C. Avoid freeze / thaw cycle.
Storage buffer	pH: 7.40 Preservative: 0.097% Sodium azide Constituent: PBS
Purity	Protein A purified
Purification notes	Purified from hybridoma culture supernatant. Purity >95% by SDS-PAGE.
Clonality	Monoclonal
Clone number	4H84

Isotype

IgG1

Applications

The Abpromise guarantee

Our **Abpromise guarantee** covers the use of ab52455 in the following tested applications.

The application notes include recommended starting dilutions; optimal dilutions/concentrations should be determined by the end user.

Application	Abreviews	Notes
IHC-P	★★★★★ (2)	Use a concentration of 10 µg/ml.
WB	★★★★☆ (2)	Use a concentration of 1 - 2 µg/ml. Predicted molecular weight: 38 kDa.

Target

Function

Involved in the presentation of foreign antigens to the immune system. Plays a role in maternal tolerance of the fetus by mediating protection from the deleterious effects of natural killer cells, cytotoxic T lymphocytes, macrophages and mononuclear cells.

Tissue specificity

Expressed in trophoblasts.

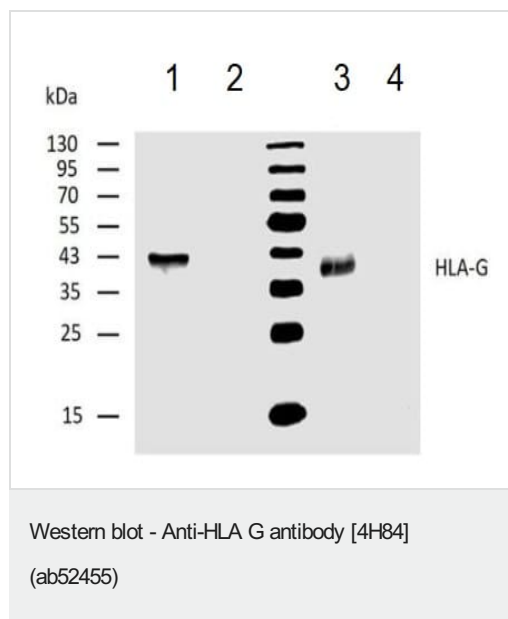
Sequence similarities

Belongs to the MHC class I family.
Contains 1 Ig-like C1-type (immunoglobulin-like) domain.

Cellular localization

Membrane.

Images



All lanes : Anti-HLA G antibody [4H84] (ab52455) at 2 µg/ml

Lane 1 : JEG-3 cell line under reducing conditions.

Lane 2 : LNCaP cell line under reducing conditions.

Lane 3 : JEG-3 cell line under non-reducing conditions.

Lane 4 : LNCaP cell line under non-reducing conditions.

Secondary

All lanes : IRDye800-conjugated anti-mouse

Predicted band size: 38 kDa

Observed band size: 40 kDa

Western blotting analysis of human HLA-G using ab52455 on lysates of JEG-3 cell line and LNCaP cell line (negative control) under reducing and non-reducing conditions.

Nitrocellulose membrane was probed with 2 µg/ml of ab52455
followed by IRDye800-conjugated anti-mouse secondary antibody.

Please note: All products are "FOR RESEARCH USE ONLY. NOT FOR USE IN DIAGNOSTIC PROCEDURES"

Our Abpromise to you: Quality guaranteed and expert technical support

- Replacement or refund for products not performing as stated on the datasheet
- Valid for 12 months from date of delivery
- Response to your inquiry within 24 hours
- We provide support in Chinese, English, French, German, Japanese and Spanish
- Extensive multi-media technical resources to help you
- We investigate all quality concerns to ensure our products perform to the highest standards

If the product does not perform as described on this datasheet, we will offer a refund or replacement. For full details of the Abpromise, please visit <https://www.abcam.com/abpromise> or contact our technical team.

Terms and conditions

- Guarantee only valid for products bought direct from Abcam or one of our authorized distributors