

Product datasheet

Anti-HLA G antibody [MEM-G/9] ab7758

★★★★☆ [4 Abreviews](#) [28 References](#) [1 Image](#)

Overview

Product name	Anti-HLA G antibody [MEM-G/9]
Description	Mouse monoclonal [MEM-G/9] to HLA G
Host species	Mouse
Specificity	Reacts with the native form of human HLA-G on the cell surface as well as with soluble HLA-G molecule in its beta 2-microglobulin associated form. Specificity was demonstrated with cells transfected with either full-length HLA-G and HLA-G1 complementary DNA. This antibody does not compete with a tested panel of other monoclonal antibodies to HLA-G. We have data to indicate that this antibody may not cross react with Mouse. However, this has not been conclusively tested and expression levels may vary in certain cell lines/tissues.
Tested applications	Suitable for: Flow Cyt
Species reactivity	Reacts with: Human Does not react with: Mouse
Immunogen	Recombinant full length protein corresponding to Human HLA G.
General notes	<p>The Life Science industry has been in the grips of a reproducibility crisis for a number of years. Abcam is leading the way in addressing this with our range of recombinant monoclonal antibodies and knockout edited cell lines for gold-standard validation. Please check that this product meets your needs before purchasing.</p> <p>If you have any questions, special requirements or concerns, please send us an inquiry and/or contact our Support team ahead of purchase. Recommended alternatives for this product can be found below, along with publications, customer reviews and Q&As</p>

Properties

Form	Liquid
Storage instructions	Shipped at 4°C. Store at +4°C short term (1-2 weeks). Upon delivery aliquot. Store at -20°C. Avoid freeze / thaw cycle.
Storage buffer	pH: 7.40 Preservative: 0.097% Sodium azide Constituent: PBS
Purity	Protein A purified
Clonality	Monoclonal

Clone number MEM-G/9
Isotype IgG1

Applications

The Abpromise guarantee Our **Abpromise guarantee** covers the use of ab7758 in the following tested applications. The application notes include recommended starting dilutions; optimal dilutions/concentrations should be determined by the end user.

Application	Abreviews	Notes
Flow Cyt	★★★★★ (1)	Use at an assay dependent concentration. Do not fix cells, see Menier et al. ab170190 - Mouse monoclonal IgG1, is suitable for use as an isotype control with this antibody.

Target

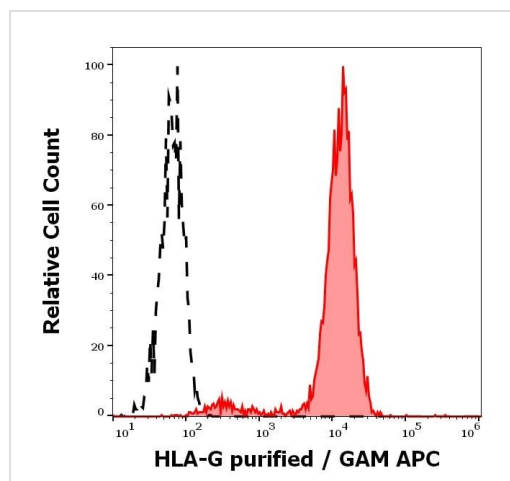
Function Involved in the presentation of foreign antigens to the immune system. Plays a role in maternal tolerance of the fetus by mediating protection from the deleterious effects of natural killer cells, cytotoxic T lymphocytes, macrophages and mononuclear cells.

Tissue specificity Expressed in trophoblasts.

Sequence similarities Belongs to the MHC class I family.
Contains 1 Ig-like C1-type (immunoglobulin-like) domain.

Cellular localization Membrane.

Images



Flow cytometry analysis showing separation of HLA-G transfected LCL cells (red-filled) from K562 cells (black-dashed) stained using ab7758 (concentration in sample 0.3 µg/ml, GAM APC).

Flow Cytometry - Anti-HLA G antibody [MEM-G/9]
(ab7758)

Please note: All products are "FOR RESEARCH USE ONLY. NOT FOR USE IN DIAGNOSTIC PROCEDURES"

Our Abpromise to you: Quality guaranteed and expert technical support

- Replacement or refund for products not performing as stated on the datasheet
- Valid for 12 months from date of delivery
- Response to your inquiry within 24 hours

- We provide support in Chinese, English, French, German, Japanese and Spanish
- Extensive multi-media technical resources to help you
- We investigate all quality concerns to ensure our products perform to the highest standards

If the product does not perform as described on this datasheet, we will offer a refund or replacement. For full details of the Abpromise, please visit <https://www.abcam.com/abpromise> or contact our technical team.

Terms and conditions

- Guarantee only valid for products bought direct from Abcam or one of our authorized distributors