




Product datasheet

Anti-HOPX/HOD antibody ab106251

★★★★★ [5 Abreviews](#) [1 References](#) [1 Image](#)

Overview

Product name	Anti-HOPX/HOD antibody
Description	Rabbit polyclonal to HOPX/HOD
Host species	Rabbit
Tested applications	Suitable for: WB
Species reactivity	Reacts with: Human Predicted to work with: Mouse, Rat, Cow, Pig 
Immunogen	Recombinant full length protein corresponding to Human HOPX/HOD aa 1-73. (BC014225) Sequence: MSAETASGPTEDQVEILEYNFNKVDKHPDSTTLCLIAAEA GLSEETQKW FKQLAKWRRSEGLPSECRSVTD <div>  Run BLAST with  Run BLAST with </div>
Positive control	Human fetal heart tissue lysate.
General notes	<p>The Life Science industry has been in the grips of a reproducibility crisis for a number of years. Abcam is leading the way in addressing this with our range of recombinant monoclonal antibodies and knockout edited cell lines for gold-standard validation. Please check that this product meets your needs before purchasing.</p> <p>If you have any questions, special requirements or concerns, please send us an inquiry and/or contact our Support team ahead of purchase. Recommended alternatives for this product can be found below, along with publications, customer reviews and Q&As</p>

Properties

Form	Lyophilized:Reconstitute with 200ul distilled sterile water. Please note that if you receive this product in liquid form it has already been reconstituted as described and no further reconstitution is necessary.
Storage instructions	Shipped at 4°C. Upon delivery aliquot and store at -20°C. Avoid freeze / thaw cycles.
Storage buffer	pH: 7.20 Preservative: 0.02% Sodium azide Constituents: 0.184% Tris glycine, 1% BSA
Purity	Protein A purified
Clonality	Polyclonal

Isotype

IgG

Applications

The Abpromise guarantee

Our **Abpromise guarantee** covers the use of ab106251 in the following tested applications.

The application notes include recommended starting dilutions; optimal dilutions/concentrations should be determined by the end user.

Application	Abreviews	Notes
WB		1/500 - 1/1000. Detects a band of approximately 8 kDa (predicted molecular weight: 8 kDa).

Target

Function

Atypical homeodomain protein which does not bind DNA and is required to modulate cardiac growth and development. Acts via its interaction with SRF, thereby modulating the expression of SRF-dependent cardiac-specific genes and cardiac development. Prevents SRF-dependent transcription either by inhibiting SRF binding to DNA or by recruiting histone deacetylase (HDAC) proteins that prevent transcription by SRF. Overexpression causes cardiac hypertrophy (By similarity). May act as a tumor suppressor.

Tissue specificity

Widely expressed. Expressed in the heart, brain, placenta, lung, skeletal and smooth muscles, uterus, urinary bladder, kidney and spleen. Down-regulated in some types of cancer such as lung cancer, choriocarcinoma, head and neck squamous cell carcinoma and oral squamous cell carcinoma.

Sequence similarities

Contains 1 homeobox DNA-binding domain.

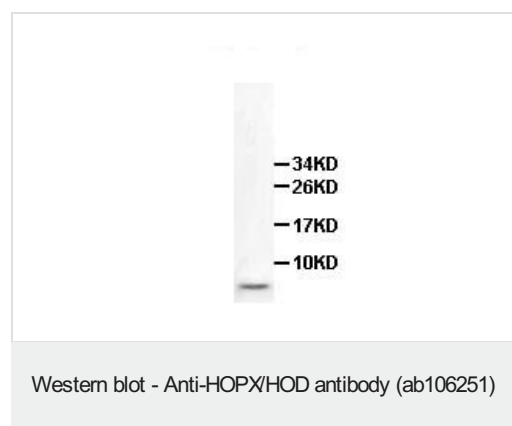
Cellular localization

Nucleus.

Form

There are 2 isoforms produced by alternative splicing.

Images



Anti-HOPX/HOD antibody (ab106251) at 1/500 dilution + Human fetal heart tissue lysate

Predicted band size: 8 kDa

Please note: All products are "FOR RESEARCH USE ONLY. NOT FOR USE IN DIAGNOSTIC PROCEDURES"

Our Abpromise to you: Quality guaranteed and expert technical support

- Replacement or refund for products not performing as stated on the datasheet
- Valid for 12 months from date of delivery
- Response to your inquiry within 24 hours

- We provide support in Chinese, English, French, German, Japanese and Spanish
- Extensive multi-media technical resources to help you
- We investigate all quality concerns to ensure our products perform to the highest standards

If the product does not perform as described on this datasheet, we will offer a refund or replacement. For full details of the Abpromise, please visit <https://www.abcam.com/abpromise> or contact our technical team.

Terms and conditions

- Guarantee only valid for products bought direct from Abcam or one of our authorized distributors