

Product datasheet

Anti-HPV16 antibody [HPV16L1/1058] - BSA and Azide free ab234030

[1 Image](#)

Overview

Product name	Anti-HPV16 antibody [HPV16L1/1058] - BSA and Azide free
Description	Mouse monoclonal [HPV16L1/1058] to HPV16 - BSA and Azide free
Host species	Mouse
Tested applications	Suitable for: IHC-P
Species reactivity	Reacts with: Human papillomavirus
Immunogen	Tissue, cells or virus corresponding to HPV16. Human papilloma virus type 16, major capsid protein L1.
Positive control	Human cervix tissue.
General notes	<p>The Life Science industry has been in the grips of a reproducibility crisis for a number of years. Abcam is leading the way in addressing this with our range of recombinant monoclonal antibodies and knockout edited cell lines for gold-standard validation. Please check that this product meets your needs before purchasing.</p> <p>If you have any questions, special requirements or concerns, please send us an inquiry and/or contact our Support team ahead of purchase. Recommended alternatives for this product can be found below, along with publications, customer reviews and Q&As</p>

Properties

Form	Liquid
Storage instructions	Shipped at 4°C. Store at +4°C short term (1-2 weeks). Upon delivery aliquot. Store at -20°C long term. Avoid freeze / thaw cycle.
Storage buffer	pH: 7.2 Constituent: PBS
Carrier free	Yes
Purity	Protein A/G purified
Purification notes	Purified from Bioreactor Concentrate by Protein A/G.
Clonality	Monoclonal
Clone number	HPV16L1/1058

Isotype	IgG2a
Light chain type	kappa

Applications

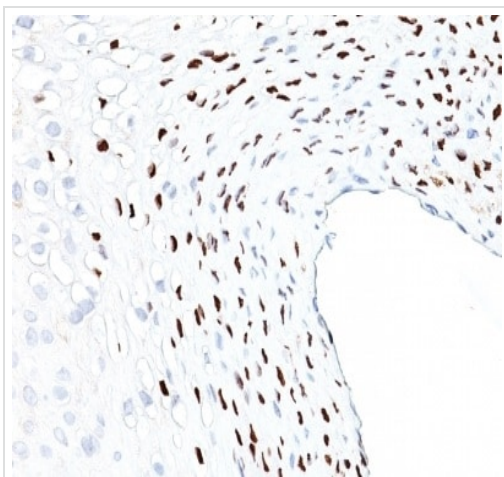
The Abpromise guarantee Our **Abpromise guarantee** covers the use of ab234030 in the following tested applications. The application notes include recommended starting dilutions; optimal dilutions/concentrations should be determined by the end user.

Application	Abreviews	Notes
IHC-P		Use a concentration of 0.5 - 1 µg/ml. Perform heat mediated antigen retrieval with citrate buffer pH 6 before commencing with IHC staining protocol. Incubate with primary antibody for 30 minutes at room temperature.

Target

Relevance Infection with specific types of HPV has been associated with an increased risk of developing cervical neoplasia. HPV types 6 and 11 have been associated with relatively benign diseases such as genital warts but types 16 and 18 are strongly associated with cervical, vaginal, and vulvar malignancies. E7-driven degradation of pRb may be involved in cervical tumorigenesis in humans.

Images



Formalin-fixed, paraffin-embedded human cervix tissue stained for HPV16 using ab234030 at 1 µg/ml in immunohistochemical analysis.

Immunohistochemistry (Formalin/PFA-fixed paraffin-embedded sections) - Anti-HPV16 antibody
[HPV16L1/1058] - BSA and Azide free (ab234030)

Please note: All products are "FOR RESEARCH USE ONLY. NOT FOR USE IN DIAGNOSTIC PROCEDURES"

Our Abpromise to you: Quality guaranteed and expert technical support

- Replacement or refund for products not performing as stated on the datasheet
- Valid for 12 months from date of delivery
- Response to your inquiry within 24 hours

- We provide support in Chinese, English, French, German, Japanese and Spanish
- Extensive multi-media technical resources to help you
- We investigate all quality concerns to ensure our products perform to the highest standards

If the product does not perform as described on this datasheet, we will offer a refund or replacement. For full details of the Abpromise, please visit <https://www.abcam.com/abpromise> or contact our technical team.

Terms and conditions

- Guarantee only valid for products bought direct from Abcam or one of our authorized distributors