




Product datasheet

Anti-HRH1/H1R antibody ab78224

1 Image

Overview

Product name	Anti-HRH1/H1R antibody
Description	Goat polyclonal to HRH1/H1R
Host species	Goat
Tested applications	Suitable for: IHC-P
Species reactivity	Reacts with: Human Predicted to work with: Mouse, Rat, Dog 
Immunogen	Synthetic peptide corresponding to Human HRH1/H1R aa 471-484 (C terminal). Sequence: CNENFKKTFKRLH Database link: NP_000852.1  Run BLAST with  Run BLAST with
Positive control	Smooth muscle from small intestine.
General notes	<p>The Life Science industry has been in the grips of a reproducibility crisis for a number of years. Abcam is leading the way in addressing this with our range of recombinant monoclonal antibodies and knockout edited cell lines for gold-standard validation. Please check that this product meets your needs before purchasing.</p> <p>If you have any questions, special requirements or concerns, please send us an inquiry and/or contact our Support team ahead of purchase. Recommended alternatives for this product can be found below, along with publications, customer reviews and Q&As</p>

Properties

Form	Liquid
Storage instructions	Shipped at 4°C. Upon delivery aliquot and store at -20°C or -80°C. Avoid repeated freeze / thaw cycles.
Storage buffer	pH: 7.30 Preservative: 0.02% Sodium azide Constituents: 0.5% BSA, 0.5% Tris buffered saline
Purity	Immunogen affinity purified
Clonality	Polyclonal

Isotype

IgG

Applications

The Abpromise guarantee

Our **Abpromise guarantee** covers the use of ab78224 in the following tested applications.

The application notes include recommended starting dilutions; optimal dilutions/concentrations should be determined by the end user.

Application	Abreviews	Notes
IHC-P		

Application notes

ELISA: 1/32000.

IHC-P: Use at a concentration of 2.5 µg/ml.

Not yet tested in other applications.

Optimal dilutions/concentrations should be determined by the end user.

Target

Function

In peripheral tissues, the H1 subclass of histamine receptors mediates the contraction of smooth muscles, increase in capillary permeability due to contraction of terminal venules, and catecholamine release from adrenal medulla, as well as mediating neurotransmission in the central nervous system.

Sequence similarities

Belongs to the G-protein coupled receptor 1 family.

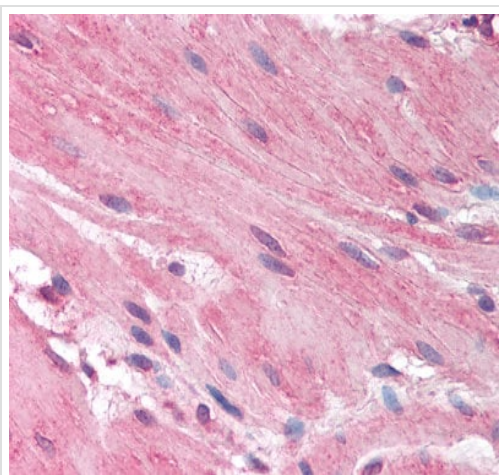
Post-translational modifications

Potential sites of phosphorylation in the third cytoplasmic loop may play an important role in regulating signal transduction through the receptor molecule.

Cellular localization

Cell membrane.

Images



Immunohistochemistry analysis of formalin fixed, paraffin embedded small intestine smooth muscle tissue using 2.5 µg/ml ab78224.

Immunohistochemistry (Formalin/PFA-fixed paraffin-embedded sections) - Anti-HRH1/H1R antibody (ab78224)

Please note: All products are "FOR RESEARCH USE ONLY. NOT FOR USE IN DIAGNOSTIC PROCEDURES"

Our Abpromise to you: Quality guaranteed and expert technical support

- Replacement or refund for products not performing as stated on the datasheet
- Valid for 12 months from date of delivery
- Response to your inquiry within 24 hours
- We provide support in Chinese, English, French, German, Japanese and Spanish
- Extensive multi-media technical resources to help you
- We investigate all quality concerns to ensure our products perform to the highest standards

If the product does not perform as described on this datasheet, we will offer a refund or replacement. For full details of the Abpromise, please visit <https://www.abcam.com/abpromise> or contact our technical team.

Terms and conditions

- Guarantee only valid for products bought direct from Abcam or one of our authorized distributors