


Product datasheet

HRP Anti-ABCE1 antibody [EPR15373(B)] - C-terminal ab209043

Recombinant RabMAb

2 Images

Overview

Product name	HRP Anti-ABCE1 antibody [EPR15373(B)] - C-terminal
Description	HRP Rabbit monoclonal [EPR15373(B)] to ABCE1 - C-terminal
Host species	Rabbit
Conjugation	HRP
Tested applications	Suitable for: WB
Species reactivity	Reacts with: Human Predicted to work with: Mouse, Rat 
Immunogen	Synthetic peptide. This information is proprietary to Abcam and/or its suppliers.
Positive control	WB: HEK293, K562, HeLa cell lysates
General notes	<p>This product is a recombinant monoclonal antibody, which offers several advantages including:</p> <ul style="list-style-type: none"> - High batch-to-batch consistency and reproducibility - Improved sensitivity and specificity - Long-term security of supply - Animal-free production <p>For more information see here.</p> <p>Our RabMAb[®] technology is a patented hybridoma-based technology for making rabbit monoclonal antibodies. For details on our patents, please refer to RabMAb[®] patents.</p>

Properties

Form	Liquid
Storage instructions	Shipped at 4°C. Store at +4°C short term (1-2 weeks). Upon delivery aliquot. Store at -20°C. Stable for 12 months at -20°C. Store In the Dark.
Storage buffer	pH: 7.40 Preservative: 0.1% Proclin 300 Solution Constituents: 1% BSA, 30% Glycerol (glycerin, glycerine), PBS
Purity	Protein A purified
Clonality	Monoclonal

Clone number EPR15373(B)

Isotype IgG

Applications

The Abpromise guarantee Our **Abpromise guarantee** covers the use of ab209043 in the following tested applications.

The application notes include recommended starting dilutions; optimal dilutions/concentrations should be determined by the end user.

Application	Abreviews	Notes
WB		1/5000. Detects a band of approximately 67 kDa (predicted molecular weight: 67 kDa).

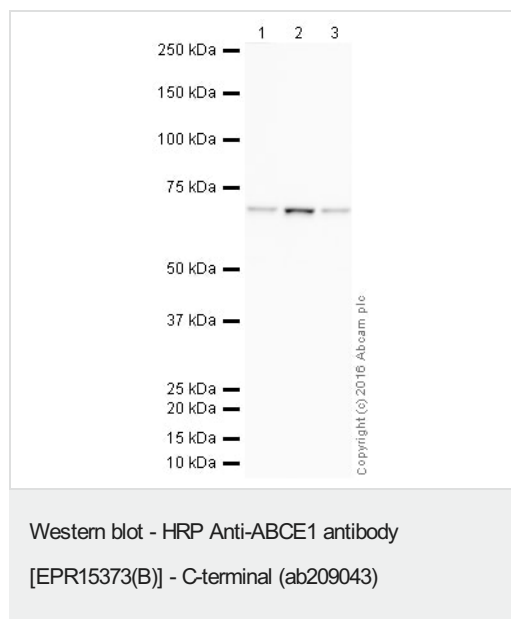
Target

Function Antagonizes the binding of 2-5A (5'-phosphorylated 2',5'-linked oligoadenylates) by RNase L through direct interaction with RNase L and therefore inhibits its endoribonuclease activity. May play a central role in the regulation of mRNA turnover. Antagonizes the anti-viral effect of the interferon-regulated 2-5A/RNase L pathway. May act as a chaperone for post-translational events during HIV-1 capsid assembly.

Sequence similarities Belongs to the ABC transporter superfamily. ABCE family.
Contains 2 4Fe-4S ferredoxin-type domains.
Contains 2 ABC transporter domains.

Cellular localization Cytoplasm. Mitochondrion. Localized to clusters of virus formation at the plasma membrane.

Images



All lanes : HRP Anti-ABCE1 antibody [EPR15373(B)] - C-terminal (ab209043) at 1/5000 dilution

Lane 1 : HEK293 (Human embryonic kidney cell line) Whole Cell Lysate

Lane 2 : K562 (Human erythromyeloblastoid leukemia cell line) Whole Cell Lysate

Lane 3 : HeLa (Human epithelial carcinoma cell line) Whole Cell Lysate

Lysates/proteins at 10 µg per lane.

Developed using the ECL technique.

Performed under reducing conditions.

Predicted band size: 67 kDa

Observed band size: 67 kDa

Exposure time: 2 minutes

This blot was produced using a 4-12% Bis-tris gel under the MOPS buffer system. The gel was run at 200V for 50 minutes before being transferred onto a Nitrocellulose membrane at 30V for 70 minutes. The membrane was then blocked for an hour using 2% Bovine Serum Albumin before being incubated with ab209043 overnight at 4°C. Antibody binding was visualised using ECL development solution **ab133406**.

Why choose a recombinant antibody?

 <p>Research with confidence Consistent and reproducible results</p>	 <p>Long-term and scalable supply Recombinant technology</p>
 <p>Success from the first experiment Confirmed specificity</p>	 <p>Ethical standards compliant Animal-free production</p>

HRP Anti-ABCE1 antibody [EPR15373(B)] - C-terminal (ab209043)

Please note: All products are "FOR RESEARCH USE ONLY. NOT FOR USE IN DIAGNOSTIC PROCEDURES"

Our Abpromise to you: Quality guaranteed and expert technical support

- Replacement or refund for products not performing as stated on the datasheet
- Valid for 12 months from date of delivery
- Response to your inquiry within 24 hours
- We provide support in Chinese, English, French, German, Japanese and Spanish
- Extensive multi-media technical resources to help you
- We investigate all quality concerns to ensure our products perform to the highest standards

If the product does not perform as described on this datasheet, we will offer a refund or replacement. For full details of the Abpromise, please visit <https://www.abcam.com/abpromise> or contact our technical team.

Terms and conditions

- Guarantee only valid for products bought direct from Abcam or one of our authorized distributors