

Product datasheet

HRP Anti-ASH2L antibody [EPR13106] ab209317

Recombinant RabMAb

2 Images

Overview

Product name	HRP Anti-ASH2L antibody [EPR13106]
Description	HRP Rabbit monoclonal [EPR13106] to ASH2L
Host species	Rabbit
Conjugation	HRP
Tested applications	Suitable for: WB
Species reactivity	Reacts with: Rat, Human
Immunogen	Synthetic peptide. This information is proprietary to Abcam and/or its suppliers.
Positive control	WB: HEK293, HeLa, C6 and PC12 whole cell lysates.
General notes	<p>This product is a recombinant monoclonal antibody, which offers several advantages including:</p> <ul style="list-style-type: none"> - High batch-to-batch consistency and reproducibility - Improved sensitivity and specificity - Long-term security of supply - Animal-free production <p>For more information see here.</p> <p>Our RabMAb[®] technology is a patented hybridoma-based technology for making rabbit monoclonal antibodies. For details on our patents, please refer to RabMAb[®] patents.</p>

Properties

Form	Liquid
Storage instructions	Shipped at 4°C. Store at +4°C short term (1-2 weeks). Upon delivery aliquot. Store at -20°C. Avoid freeze / thaw cycle. Store In the Dark.
Storage buffer	<p>pH: 7.40</p> <p>Preservative: 0.1% Proclin 300 Solution</p> <p>Constituents: PBS, 30% Glycerol (glycerin, glycerine), 1% BSA</p>
Purity	Protein A purified
Clonality	Monoclonal
Clone number	EPR13106
Isotype	IgG

Applications

The Abpromise guarantee

Our **Abpromise guarantee** covers the use of ab209317 in the following tested applications.

The application notes include recommended starting dilutions; optimal dilutions/concentrations should be determined by the end user.

Application	Abreviews	Notes
WB		1/3000. Detects a band of approximately 80 kDa (predicted molecular weight: 69 kDa).

Target

Function

Component of the Set1/Ash2 histone methyltransferase (HMT) complex, a complex that specifically methylates 'Lys-4' of histone H3, but not if the neighboring 'Lys-9' residue is already methylated. As part of the MLL1/MLL complex it is involved in methylation and dimethylation at 'Lys-4' of histone H3. May function as a transcriptional regulator. May play a role in hematopoiesis.

Tissue specificity

Ubiquitously expressed. Predominantly expressed in adult heart and testis and fetal lung and liver, with barely detectable expression in adult lung, liver, kidney, prostate, and peripheral leukocytes.

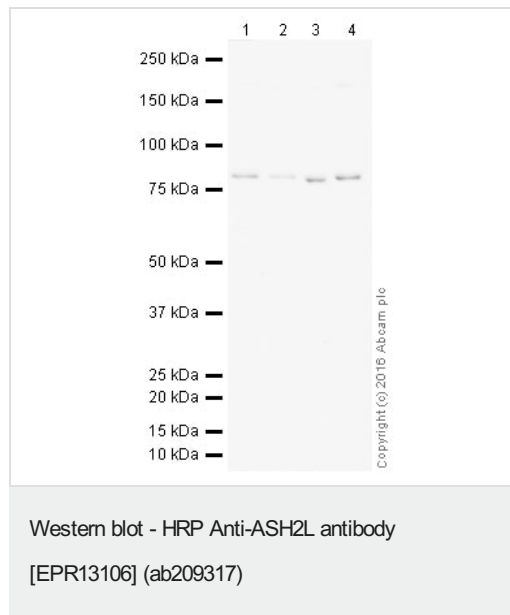
Sequence similarities

Contains 1 B30.2/SPRY domain.

Cellular localization

Nucleus.

Images



All lanes : HRP Anti-ASH2L antibody [EPR13106] (ab209317) at 1/3000 dilution

Lane 1 : HEK293 (Human embryonic kidney cell line) Whole Cell Lysate

Lane 2 : HeLa whole cell lysate (**ab150035**)

Lane 3 : C6 (Rat glioma cell line) Whole Cell Lysate

Lane 4 : PC12 (Rat adrenal pheochromocytoma cell line) Whole Cell Lysate

Lysates/proteins at 10 µg per lane.

Developed using the ECL technique.

Performed under reducing conditions.





Predicted band size: 69 kDa

Observed band size: 80 kDa

Exposure time: 20 minutes

This blot was produced using a 4-12% Bis-tris gel under the MOPS buffer system. The gel was run at 200V for 50 minutes before being transferred onto a Nitrocellulose membrane at 30V for 70 minutes. The membrane was then blocked for an hour using 3% milk before being incubated with ab209317 overnight at 4°C. Antibody binding was visualised using ECL development solution **ab133406**.

Why choose a recombinant antibody?

 Research with confidence Consistent and reproducible results	 Long-term and scalable supply Recombinant technology
 Success from the first experiment Confirmed specificity	 Ethical standards compliant Animal-free production

HRP Anti-ASH2L antibody [EPR13106] (ab209317)

Please note: All products are "FOR RESEARCH USE ONLY. NOT FOR USE IN DIAGNOSTIC PROCEDURES"

Our Abpromise to you: Quality guaranteed and expert technical support

- Replacement or refund for products not performing as stated on the datasheet
- Valid for 12 months from date of delivery
- Response to your inquiry within 24 hours
- We provide support in Chinese, English, French, German, Japanese and Spanish
- Extensive multi-media technical resources to help you
- We investigate all quality concerns to ensure our products perform to the highest standards

If the product does not perform as described on this datasheet, we will offer a refund or replacement. For full details of the Abpromise, please visit <https://www.abcam.com/abpromise> or contact our technical team.

Terms and conditions

- Guarantee only valid for products bought direct from Abcam or one of our authorized distributors