

Product datasheet

HRP Anti-FOXP3 antibody [mAbcam 22510] ab22831

★★★★★ [2 Abreviews](#) [1 Image](#)

Overview

Product name	HRP Anti-FOXP3 antibody [mAbcam 22510]
Description	HRP Mouse monoclonal [mAbcam 22510] to FOXP3
Host species	Mouse
Conjugation	HRP
Tested applications	Suitable for: WB
Species reactivity	Reacts with: Human
Immunogen	Synthetic peptide corresponding to Human FOXP3 aa 400 to the C-terminus. (Peptide available as ab16809)
General notes	<p>The Life Science industry has been in the grips of a reproducibility crisis for a number of years. Abcam is leading the way in addressing this with our range of recombinant monoclonal antibodies and knockout edited cell lines for gold-standard validation. Please check that this product meets your needs before purchasing.</p> <p>If you have any questions, special requirements or concerns, please send us an inquiry and/or contact our Support team ahead of purchase. Recommended alternatives for this product can be found below, along with publications, customer reviews and Q&As</p>

Properties

Form	Liquid
Storage instructions	Shipped at 4°C. Store at +4°C. Avoid freeze / thaw cycle. Store In the Dark.
Storage buffer	pH: 7.40 Preservative: 0.1% Proclin 300 Solution Constituents: PBS, 1% BSA, 30% Glycerol (glycerin, glycerine)
Purity	IgG fraction
Clonality	Monoclonal
Clone number	mAbcam 22510
Isotype	IgG1
Light chain type	kappa

Applications

Applications

The Abpromise guarantee

Our **Abpromise guarantee** covers the use of ab22831 in the following tested applications.

The application notes include recommended starting dilutions; optimal dilutions/concentrations should be determined by the end user.

Application	Abreviews	Notes
WB	★★★★★ (1)	1/1000. Detects a band of approximately 50 kDa (predicted molecular weight: 50 kDa).

Target

Function

Probable transcription factor. Plays a critical role in the control of immune response.

Involvement in disease

Defects in FOXP3 are the cause of immunodeficiency polyendocrinopathy, enteropathy, X-linked syndrome (IPEX) [MIM:304790]; also known as X-linked autoimmunity-immunodeficiency syndrome. IPEX is characterized by neonatal onset insulin-dependent diabetes mellitus, infections, secretory diarrhea, thrombocytopenia, anemia and eczema. It is usually lethal in infancy.

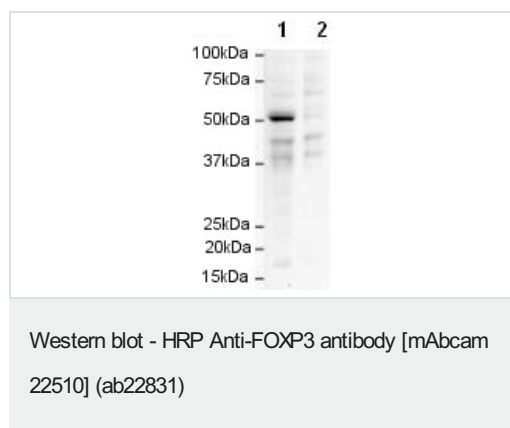
Sequence similarities

Contains 1 C2H2-type zinc finger.
Contains 1 fork-head DNA-binding domain.

Cellular localization

Nucleus.

Images



All lanes : HRP Anti-FOXP3 antibody [mAbcam 22510] (ab22831)
at 1/1000 dilution

Lane 1 : HEK 293 cells overexpressing human FOXP3

Lane 2 : HEK 293 cells overexpressing human FOXP3 with Human FOXP3 peptide (**ab16809**) at 1 µg/ml

Developed using the ECL technique.

Performed under reducing conditions.

Predicted band size: 50 kDa

Observed band size: 50 kDa

Exposure time: 3 minutes

Please note: All products are "FOR RESEARCH USE ONLY. NOT FOR USE IN DIAGNOSTIC PROCEDURES"

Our Abpromise to you: Quality guaranteed and expert technical support

- Replacement or refund for products not performing as stated on the datasheet
- Valid for 12 months from date of delivery
- Response to your inquiry within 24 hours
- We provide support in Chinese, English, French, German, Japanese and Spanish
- Extensive multi-media technical resources to help you
- We investigate all quality concerns to ensure our products perform to the highest standards

If the product does not perform as described on this datasheet, we will offer a refund or replacement. For full details of the Abpromise, please visit <https://www.abcam.com/abpromise> or contact our technical team.

Terms and conditions

- Guarantee only valid for products bought direct from Abcam or one of our authorized distributors