

Product datasheet

HRP Anti-Glutaminase antibody [EP7212] ab200408

KO VALIDATED Recombinant RabMAB

[2 Abreviews](#) [4 References](#) [3 Images](#)

Overview

Product name	HRP Anti-Glutaminase antibody [EP7212]
Description	HRP Rabbit monoclonal [EP7212] to Glutaminase
Host species	Rabbit
Conjugation	HRP
Tested applications	Suitable for: WB
Species reactivity	Reacts with: Human Does not react with: Mouse, Rat
Immunogen	Synthetic peptide. This information is proprietary to Abcam and/or its suppliers.
Positive control	WB: Human fetal kidney lysate.
General notes	Our RabMAB [®] technology is a patented hybridoma-based technology for making rabbit monoclonal antibodies. For details on our patents, please refer to RabMAB[®] patents .

Properties

Form	Liquid
Storage instructions	Shipped at 4°C. Store at +4°C short term (1-2 weeks). Upon delivery aliquot. Store at -20°C. Avoid freeze / thaw cycle. Store In the Dark.
Storage buffer	pH: 7.40 Preservative: 0.1% Proclin 300 Solution Constituents: 30% Glycerol (glycerin, glycerine), 1% BSA, PBS
Purity	Protein A purified
Clonality	Monoclonal
Clone number	EP7212
Isotype	IgG

Applications

The Abpromise guarantee Our [Abpromise guarantee](#) covers the use of ab200408 in the following tested applications.

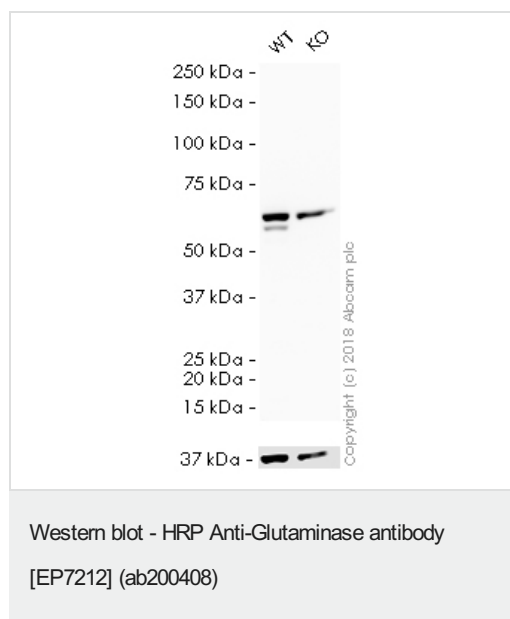
The application notes include recommended starting dilutions; optimal dilutions/concentrations should be determined by the end user.

Application	Abreviews	Notes
WB		1/5000. Detects a band of approximately 73 kDa (predicted molecular weight: 73 kDa).

Target

Function	Catalyzes the first reaction in the primary pathway for the renal catabolism of glutamine.
Tissue specificity	KGA is expressed predominantly in brain and kidney but not in liver, isoform 3 is expressed principally in cardiac muscle and pancreas but not in liver or brain, and isoform 2 is expressed solely in cardiac and skeletal muscle.
Sequence similarities	Belongs to the glutaminase family. Contains 1 ANK repeat.
Cellular localization	Mitochondrion.

Images



All lanes : HRP Anti-Glutaminase antibody [EP7212] (ab200408) at 1/5000 dilution

Lane 1 : Wild-type HAP1 whole cell lysate

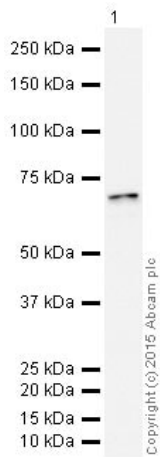
Lane 2 : GLS (Glutaminase) knockout HAP1 whole cell lysate

Lysates/proteins at 20 µg per lane.

Predicted band size: 73 kDa

Exposure time: 12 minutes

ab200408 was shown to recognize Glutaminase in wild-type HAP1 cells as signal was lost at the expected MW in GLS (Glutaminase) knockout cells. Additional cross-reactive bands were observed in the wild-type and knockout cells. Wild-type and GLS (Glutaminase) knockout samples were subjected to SDS-PAGE. Ab200408 and **ab184095** (Mouse monoclonal [mAbcam 9484] to GAPDH - Loading Control (Alexa Fluor® 680) loading control) were incubated overnight at 4°C at 1/5000 dilution and 1/1000 dilution respectively. The loading control was imaged using the Licor Odyssey CLx prior to blots being developed with ECL technique.



Western blot - HRP Anti-Glutaminase antibody [EP7212] (ab200408)

HRP Anti-Glutaminase antibody [EP7212] (ab200408) at 1/5000 dilution + Kidney (Human) Tissue Lysate - fetal normal tissue at 10 µg

Developed using the ECL technique.

Performed under reducing conditions.




Predicted band size: 73 kDa

Observed band size: 73 kDa

Exposure time: 20 minutes

This blot was produced using a 4-12% Bis-tris gel under the MOPS buffer system. The gel was run at 200V for 50 minutes before being transferred onto a Nitrocellulose membrane at 30V for 70 minutes. The membrane was then blocked for an hour using 3% milk before being incubated with ab200408 overnight at 4°C. Antibody binding was visualised using ECL development solution [ab133406](#).

Why choose a recombinant antibody?

 Research with confidence Consistent and reproducible results	 Long-term and scalable supply Recombinant technology
 Success from the first experiment Confirmed specificity	 Ethical standards compliant Animal-free production

HRP Anti-Glutaminase antibody [EP7212] (ab200408)

Please note: All products are "FOR RESEARCH USE ONLY. NOT FOR USE IN DIAGNOSTIC PROCEDURES"

Our Promise to you: Quality guaranteed and expert technical support

- Replacement or refund for products not performing as stated on the datasheet
- Valid for 12 months from date of delivery

- Response to your inquiry within 24 hours
- We provide support in Chinese, English, French, German, Japanese and Spanish
- Extensive multi-media technical resources to help you
- We investigate all quality concerns to ensure our products perform to the highest standards

If the product does not perform as described on this datasheet, we will offer a refund or replacement. For full details of the Abpromise, please visit <https://www.abcam.com/abpromise> or contact our technical team.

Terms and conditions

- Guarantee only valid for products bought direct from Abcam or one of our authorized distributors