

Product datasheet

HRP Anti-GM-CSF antibody [KT35] ab106790

[2 Images](#)

Overview

Product name	HRP Anti-GM-CSF antibody [KT35]
Description	HRP Rat monoclonal [KT35] to GM-CSF
Host species	Rat
Conjugation	HRP
Tested applications	Suitable for: WB, Sandwich ELISA
Species reactivity	Reacts with: Human
Immunogen	Recombinant Human GM-CSF.
General notes	<p>The Life Science industry has been in the grips of a reproducibility crisis for a number of years. Abcam is leading the way in addressing this with our range of recombinant monoclonal antibodies and knockout edited cell lines for gold-standard validation. Please check that this product meets your needs before purchasing.</p> <p>If you have any questions, special requirements or concerns, please send us an inquiry and/or contact our Support team ahead of purchase. Recommended alternatives for this product can be found below, along with publications, customer reviews and Q&As</p>

Properties

Form	Liquid
Storage instructions	Shipped at 4°C. Store at +4°C.
Storage buffer	Preservative: 0.01% Thimerosal (merthiolate) Constituent: PBS
Purity	Protein G purified
Purification notes	IgG is purified from culture supernatant through a Protein G column and labelled with horseradish peroxidase.
Clonality	Monoclonal
Clone number	KT35
Isotype	IgG2a

Applications

The Abpromise guarantee

Our **Abpromise guarantee** covers the use of ab106790 in the following tested applications.

The application notes include recommended starting dilutions; optimal dilutions/concentrations should be determined by the end user.

Application	Abreviews	Notes
WB		Use at an assay dependent concentration. Predicted molecular weight: 16 kDa.
Sandwich ELISA		1/1000. Can be paired for Sandwich ELISA with Rat monoclonal [KT37] to GM-CSF (ab106746) . Can be used as detection antibody when paired with recommended antibody.

Target

Function

Cytokine that stimulates the growth and differentiation of hematopoietic precursor cells from various lineages, including granulocytes, macrophages, eosinophils and erythrocytes.

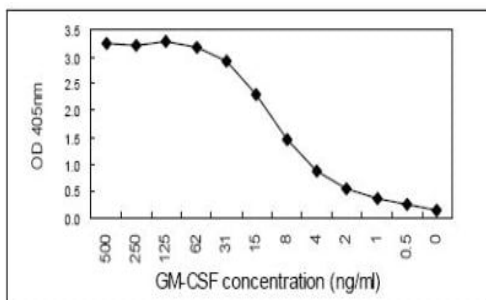
Sequence similarities

Belongs to the GM-CSF family.

Cellular localization

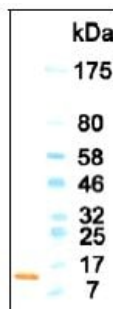
Secreted.

Images



Sandwich ELISA - HRP Anti-GM-CSF antibody [KT35] (ab106790)

ab106790, at a 1/1000 dilution, used as the detection antibody in a Sandwich ELISA. The capture antibody is an alternative anti-Human GM-CSF monoclonal.



Western blot - HRP Anti-GM-CSF antibody [KT35] (ab106790)

HRP Anti-GM-CSF antibody [KT35] (ab106790) + Recombinant protein

Predicted band size: 16 kDa

ab106790 used as detection antibody.

Please note: All products are "FOR RESEARCH USE ONLY. NOT FOR USE IN DIAGNOSTIC PROCEDURES"

Our Abpromise to you: Quality guaranteed and expert technical support

- Replacement or refund for products not performing as stated on the datasheet
- Valid for 12 months from date of delivery
- Response to your inquiry within 24 hours
- We provide support in Chinese, English, French, German, Japanese and Spanish
- Extensive multi-media technical resources to help you
- We investigate all quality concerns to ensure our products perform to the highest standards

If the product does not perform as described on this datasheet, we will offer a refund or replacement. For full details of the Abpromise, please visit <https://www.abcam.com/abpromise> or contact our technical team.

Terms and conditions

- Guarantee only valid for products bought direct from Abcam or one of our authorized distributors