


Product datasheet

HRP Anti-GRB2 antibody [Y237] ab201865

Recombinant RabMAb

3 Images

Overview

| | |
|---------------------|---|
| Product name | HRP Anti-GRB2 antibody [Y237] |
| Description | HRP Rabbit monoclonal [Y237] to GRB2 |
| Host species | Rabbit |
| Conjugation | HRP |
| Tested applications | Suitable for: IHC-P, WB |
| Species reactivity | Reacts with: Human Predicted to work with: Mouse, Rat  |
| Immunogen | Synthetic peptide. This information is proprietary to Abcam and/or its suppliers. |
| Positive control | WB: HEK293 whole cell lysate. IHC-P: Normal human colon tissue. |
| General notes | Our RabMAb [®] technology is a patented hybridoma-based technology for making rabbit monoclonal antibodies. For details on our patents, please refer to RabMAb[®] patents . |

Properties

| | |
|----------------------|--|
| Form | Liquid |
| Storage instructions | Shipped at 4°C. Store at +4°C short term (1-2 weeks). Upon delivery aliquot. Store at -20°C. Avoid freeze / thaw cycle. Store In the Dark. |
| Storage buffer | pH: 7.40 Preservative: 0.1% Proclin 300 Solution Constituents: PBS, 30% Glycerol (glycerin, glycerine), 1% BSA |
| Purity | Protein A purified |
| Clonality | Monoclonal |
| Clone number | Y237 |
| Isotype | IgG |

Applications

The **Abpromise guarantee** Our **Abpromise guarantee** covers the use of ab201865 in the following tested applications.

The application notes include recommended starting dilutions; optimal dilutions/concentrations should be determined by the end user.

| Application | Abreviews | Notes |
|-------------|-----------|--|
| IHC-P | | 1/50. Perform heat mediated antigen retrieval with citrate buffer pH 6 before commencing with IHC staining protocol. |
| WB | | 1/5000. Detects a band of approximately 26 kDa (predicted molecular weight: 25 kDa). |

Target

Function

Adapter protein that provides a critical link between cell surface growth factor receptors and the Ras signaling pathway.

Isoform GRB3-3 does not bind to phosphorylated epidermal growth factor receptor (EGFR) but inhibits EGF-induced transactivation of a RAS-responsive element. Isoform GRB3-3 acts as a dominant negative protein over GRB2 and by suppressing proliferative signals, may trigger active programmed cell death.

Sequence similarities

Belongs to the GRB2/sem-5/DRK family.

Contains 1 SH2 domain.

Contains 2 SH3 domains.

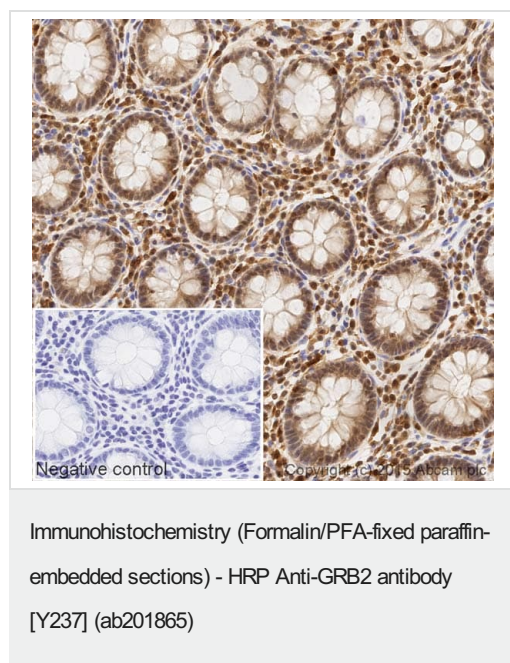
Domain

The SH3 domains mediate interaction with RALGPS1 and SHB.

Cellular localization

Golgi apparatus.

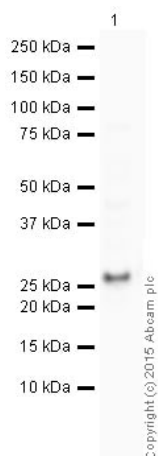
Images



IHC image of GRB2 staining in a section of formalin-fixed paraffin-embedded normal human colon tissue*, performed on a Leica BOND. The section was pre-treated using heat mediated antigen retrieval with sodium citrate buffer (pH6, epitope retrieval solution 1) for 20mins. The section was then incubated with ab201865, 1/50 dilution, for 15 mins at room temperature. DAB was used as the chromogen. The section was then counterstained with haematoxylin and mounted with DPX. The inset negative control image is taken from an identical assay without primary antibody.

For other IHC staining systems (automated and non-automated) customers should optimize variable parameters such as antigen retrieval conditions, primary antibody concentration and antibody incubation times.

*Tissue obtained from the Human Research Tissue Bank, supported by the NIHR Cambridge Biomedical Research Centre



Western blot - HRP Anti-GRB2 antibody [Y237]
(ab201865)

HRP Anti-GRB2 antibody [Y237] (ab201865) at 1/5000 dilution +
HEK293 (Human embryonic kidney cell line) Whole Cell Lysa at 10
µg

Developed using the ECL technique.

Performed under reducing conditions.

Predicted band size: 25 kDa

Observed band size: 26 kDa

Exposure time: 30 seconds

This blot was produced using a 4-12% Bis-tris gel under the MES
buffer system. The gel was run at 200V for 35 minutes before being
transferred onto a Nitrocellulose membrane at 30V for 70 minutes.
The membrane was then blocked for an hour using 2% Bovine
Serum Albumin before being incubated with ab201865 overnight at
4°C. Antibody binding was visualised using ECL development
solution [ab133406](#).

Why choose a recombinant antibody?



**Research with
confidence**
Consistent and
reproducible results



**Long-term and
scalable supply**
Recombinant
technology



**Success from the
first experiment**
Confirmed
specificity



**Ethical standards
compliant**
Animal-free
production

HRP Anti-GRB2 antibody [Y237] (ab201865)

Please note: All products are "FOR RESEARCH USE ONLY. NOT FOR USE IN DIAGNOSTIC PROCEDURES"

Our Abpromise to you: Quality guaranteed and expert technical support

- Replacement or refund for products not performing as stated on the datasheet
- Valid for 12 months from date of delivery
- Response to your inquiry within 24 hours
- We provide support in Chinese, English, French, German, Japanese and Spanish
- Extensive multi-media technical resources to help you
- We investigate all quality concerns to ensure our products perform to the highest standards

If the product does not perform as described on this datasheet, we will offer a refund or replacement. For full details of the Abpromise, please visit <https://www.abcam.com/abpromise> or contact our technical team.

Terms and conditions

- Guarantee only valid for products bought direct from Abcam or one of our authorized distributors