


Product datasheet

HRP Anti-GST3 / GST pi antibody [EPR8263] ab202930

KO VALIDATED Recombinant RabMAb

4 Images

Overview

Product name	HRP Anti-GST3 / GST pi antibody [EPR8263]
Description	HRP Rabbit monoclonal [EPR8263] to GST3 / GST pi
Host species	Rabbit
Conjugation	HRP
Tested applications	Suitable for: IHC-P, WB
Species reactivity	Reacts with: Human Predicted to work with: Mouse, Rat 
Immunogen	Synthetic peptide within Human GST3/ GST pi. The exact sequence is proprietary. Database link: P09211
Positive control	WB: K562, PC3 and Jurkat whole cell lysates and human cerebellum tissue lysate. IHC-P: FFPE human placenta (normal) tissue sections.
General notes	<p>This product is a recombinant monoclonal antibody, which offers several advantages including:</p> <ul style="list-style-type: none"> - High batch-to-batch consistency and reproducibility - Improved sensitivity and specificity - Long-term security of supply - Animal-free production <p>For more information see here.</p> <p>Our RabMAb[®] technology is a patented hybridoma-based technology for making rabbit monoclonal antibodies. For details on our patents, please refer to RabMAb[®] patents.</p>

Properties

Form	Liquid
Storage instructions	Shipped at 4°C. Store at +4°C short term (1-2 weeks). Upon delivery aliquot. Store at -20°C. Avoid freeze / thaw cycle. Store In the Dark.
Storage buffer	pH: 7.40 Preservative: 0.1% Proclin 300 Solution Constituents: PBS, 1% BSA, 30% Glycerol (glycerin, glycerine)
Purity	Protein A purified

Clonality	Monoclonal
Clone number	EPR8263
Isotype	IgG

Applications

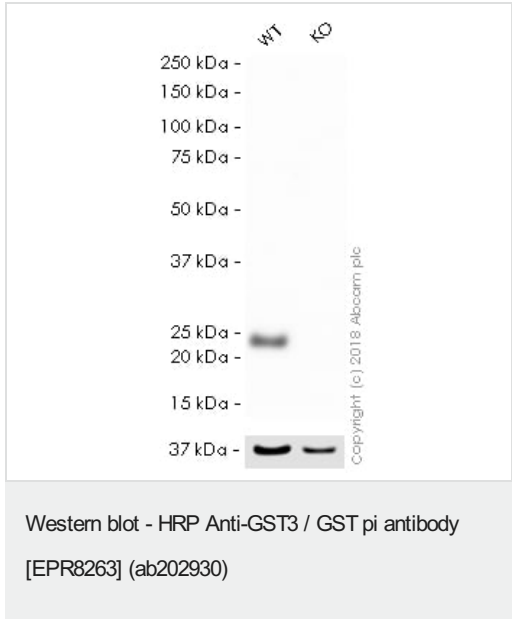
The Abpromise guarantee Our **Abpromise guarantee** covers the use of ab202930 in the following tested applications. The application notes include recommended starting dilutions; optimal dilutions/concentrations should be determined by the end user.

Application	Abreviews	Notes
IHC-P		1/625. Perform heat mediated antigen retrieval with citrate buffer pH 6 before commencing with IHC staining protocol.
WB		1/5000. Detects a band of approximately 23 kDa (predicted molecular weight: 23 kDa).

Target

Function	Conjugation of reduced glutathione to a wide number of exogenous and endogenous hydrophobic electrophiles.
Sequence similarities	Belongs to the GST superfamily. Pi family. Contains 1 GST C-terminal domain. Contains 1 GST N-terminal domain.

Images



All lanes : HRP Anti-GST3 / GST pi antibody [EPR8263] (ab202930) at 1/5000 dilution

Lane 1 : Wild-type HAP1 whole cell lysate
Lane 2 : GSTP1 (GST3 / GST pi) knockout HAP1 whole cell lysate

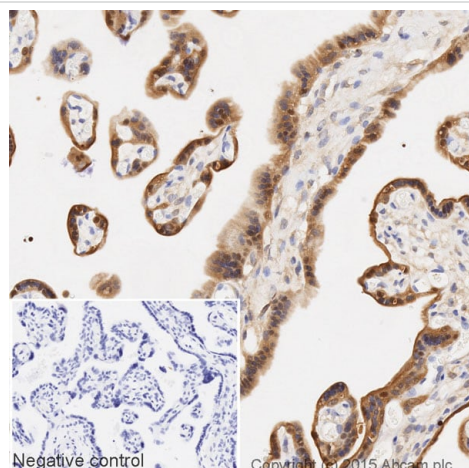
Lysates/proteins at 20 µg per lane.

Predicted band size: 23 kDa
Observed band size: 23 kDa

Exposure time: 10 seconds

ab202930 was shown to specifically react with GST3 / GST pi in wild-type HAP1 cells as signal was lost in GSTP1 (GST3 / GST pi)

knockout cells. Wild-type and GSTP1 (GST3 / GST pi) knockout samples were subjected to SDS-PAGE. Ab202930 and [ab184095](#) (Mouse monoclonal [mAbcam 9484] to GAPDH - Loading Control (Alexa Fluor® 680) loading control) were incubated overnight at 4°C at 1/5000 dilution and 1/1000 dilution respectively. The loading control was imaged using the Licor Odyssey CLx prior to blots being developed with ECL technique.

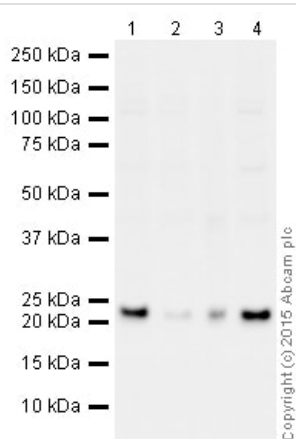


Immunohistochemistry (Formalin/PFA-fixed paraffin-embedded sections) - HRP Anti-GST3 / GST pi antibody [EPR8263] (ab202930)

IHC image of GST3/GST pi staining in a section of formalin-fixed paraffin-embedded normal human placenta tissue*, performed on a Leica BOND™. The section was pre-treated using heat mediated antigen retrieval with sodium citrate buffer (pH6, epitope retrieval solution 1) for 20mins. The section was then incubated with ab202930, 1/625 dilution, for 15 mins at room temperature. DAB was used as the chromogen. The section was then counterstained with haematoxylin and mounted with DPX. The inset negative control image is taken from an identical assay without primary antibody.

For other IHC staining systems (automated and non-automated) customers should optimize variable parameters such as antigen retrieval conditions, primary antibody concentration and antibody incubation times.

*Tissue obtained from the Human Research Tissue Bank, supported by the NIHR Cambridge Biomedical Research Centre



Western blot - HRP Anti-GST3 / GST pi antibody [EPR8263] (ab202930)

All lanes : HRP Anti-GST3 / GST pi antibody [EPR8263] (ab202930) at 1/5000 dilution

Lane 1 : K562 (Human erythromyeloblastoid leukemia cell line) Whole Cell Lysate

Lane 2 : PC3 (Human Prostate carcinoma) Whole Cell Lysate

Lane 3 : Human Cerebellum Tissue Lysate

Lane 4 : Jurkat (Human T cell lymphoblast-like cell line) Whole Cell Lysate

Lysates/proteins at 10 µg per lane.

Developed using the ECL technique.

Performed under reducing conditions.

Predicted band size: 23 kDa

Observed band size: 23 kDa

Exposure time: 2 seconds

This blot was produced using a 4-12% Bis-tris gel under the MES buffer system. The gel was run at 200V for 35 minutes before being transferred onto a Nitrocellulose membrane at 30V for 70 minutes. The membrane was then blocked for an hour using 2% Bovine Serum Albumin before being incubated with ab202930 overnight at 4°C. Antibody binding was visualised using ECL development solution **ab133406**.

Why choose a recombinant antibody?



- Research with confidence**
Consistent and reproducible results
- Long-term and scalable supply**
Recombinant technology
- Success from the first experiment**
Confirmed specificity
- Ethical standards compliant**
Animal-free production

HRP Anti-GST3 / GST pi antibody [EPR8263]
(ab202930)

Please note: All products are "FOR RESEARCH USE ONLY. NOT FOR USE IN DIAGNOSTIC PROCEDURES"

Our Abpromise to you: Quality guaranteed and expert technical support

- Replacement or refund for products not performing as stated on the datasheet
- Valid for 12 months from date of delivery
- Response to your inquiry within 24 hours
- We provide support in Chinese, English, French, German, Japanese and Spanish
- Extensive multi-media technical resources to help you
- We investigate all quality concerns to ensure our products perform to the highest standards

If the product does not perform as described on this datasheet, we will offer a refund or replacement. For full details of the Abpromise, please visit <https://www.abcam.com/abpromise> or contact our technical team.

Terms and conditions

- Guarantee only valid for products bought direct from Abcam or one of our authorized distributors