

Product datasheet

HRP Anti-Hemopexin antibody [EPR5610] ab198556

Recombinant RabMAb

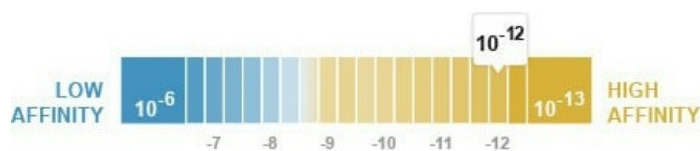
2 Images

Overview

Product name	HRP Anti-Hemopexin antibody [EPR5610]
Description	HRP Rabbit monoclonal [EPR5610] to Hemopexin
Host species	Rabbit
Conjugation	HRP
Tested applications	Suitable for: WB
Species reactivity	Reacts with: Human
Immunogen	Synthetic peptide. This information is proprietary to Abcam and/or its suppliers.
Positive control	WB: Human Plasma Total Protein lysate.
General notes	Our RabMAb [®] technology is a patented hybridoma-based technology for making rabbit monoclonal antibodies. For details on our patents, please refer to RabMAb[®] patents .

Properties

Form	Liquid
Storage instructions	Shipped at 4°C. Store at +4°C short term (1-2 weeks). Upon delivery aliquot. Store at -20°C. Avoid freeze / thaw cycle. Store In the Dark.
Dissociation constant (K _D)	K _D = 8.30 x 10 ⁻¹² M



[Learn more about K_D](#)

Storage buffer	pH: 7.40 Preservative: 0.1% Proclin 300 Solution Constituents: 30% Glycerol (glycerin, glycerine), 1% BSA, PBS
Purity	Protein A purified
Clonality	Monoclonal
Clone number	EPR5610
Isotype	IgG

Applications

The Abpromise guarantee

Our **Abpromise guarantee** covers the use of ab198556 in the following tested applications.

The application notes include recommended starting dilutions; optimal dilutions/concentrations should be determined by the end user.

Application	Abreviews	Notes
WB		1/5000. Detects a band of approximately 73 kDa (predicted molecular weight: 52 kDa).

Target

Function

Binds heme and transports it to the liver for breakdown and iron recovery, after which the free hemopexin returns to the circulation.

Tissue specificity

Expressed by the liver and secreted in plasma.

Sequence similarities

Belongs to the hemopexin family.
Contains 5 hemopexin-like domains.

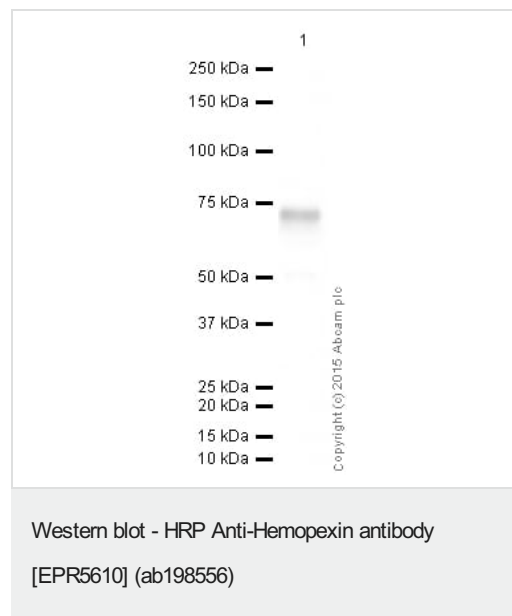
Post-translational modifications

N- and O-glycosylated. O-glycosylated with core 1 or possibly core 8 glycans.

Cellular localization

Secreted.

Images



HRP Anti-Hemopexin antibody [EPR5610] (ab198556) at 1/5000 dilution + Human Plasma Total Protein Lysate at 10 µg

Developed using the ECL technique.

Performed under reducing conditions.

Predicted band size: 52 kDa





Observed band size: 73 kDa

Exposure time: 20 seconds

This blot was produced using a 4-12% Bis-tris gel under the MOPS buffer system. The gel was run at 200V for 50 minutes before being transferred onto a Nitrocellulose membrane at 30V for 70 minutes. The membrane was then blocked for an hour using 3% milk before being incubated with ab198556 overnight at 4°C. Antibody binding

was visualised using ECL development solution **ab133406**.

Why choose a recombinant antibody?

 <p>Research with confidence Consistent and reproducible results</p>	 <p>Long-term and scalable supply Recombinant technology</p>
 <p>Success from the first experiment Confirmed specificity</p>	 <p>Ethical standards compliant Animal-free production</p>

HRP Anti-Hemopexin antibody [EPR5610]
(ab198556)

Please note: All products are "FOR RESEARCH USE ONLY. NOT FOR USE IN DIAGNOSTIC PROCEDURES"

Our Abpromise to you: Quality guaranteed and expert technical support

- Replacement or refund for products not performing as stated on the datasheet
- Valid for 12 months from date of delivery
- Response to your inquiry within 24 hours
- We provide support in Chinese, English, French, German, Japanese and Spanish
- Extensive multi-media technical resources to help you
- We investigate all quality concerns to ensure our products perform to the highest standards

If the product does not perform as described on this datasheet, we will offer a refund or replacement. For full details of the Abpromise, please visit <https://www.abcam.com/abpromise> or contact our technical team.

Terms and conditions

- Guarantee only valid for products bought direct from Abcam or one of our authorized distributors