

Product datasheet

HRP Anti-Lactate Dehydrogenase B/LDH-B antibody [EP1565Y] ab208366

Recombinant RabMAb

[1 References](#) [2 Images](#)

Overview

Product name	HRP Anti-Lactate Dehydrogenase B/LDH-B antibody [EP1565Y]
Description	HRP Rabbit monoclonal [EP1565Y] to Lactate Dehydrogenase B/LDH-B
Host species	Rabbit
Conjugation	HRP
Tested applications	Suitable for: WB
Species reactivity	Reacts with: Human
Immunogen	Synthetic peptide. This information is proprietary to Abcam and/or its suppliers.
Positive control	WB: HeLa whole cell lysate.
General notes	Our RabMAb [®] technology is a patented hybridoma-based technology for making rabbit monoclonal antibodies. For details on our patents, please refer to RabMAb[®] patents .

Properties

Form	Liquid
Storage instructions	Shipped at 4°C. Store at +4°C short term (1-2 weeks). Upon delivery aliquot. Store at -20°C. Avoid freeze / thaw cycle. Store In the Dark.
Storage buffer	pH: 7.40 Preservative: 0.1% Proclin 300 Solution Constituents: 30% Glycerol (glycerin, glycerine), 1% BSA, PBS
Purity	Affinity purified
Clonality	Monoclonal
Clone number	EP1565Y
Isotype	IgG

Applications

The **Abpromise guarantee** Our [Abpromise guarantee](#) covers the use of ab208366 in the following tested applications.

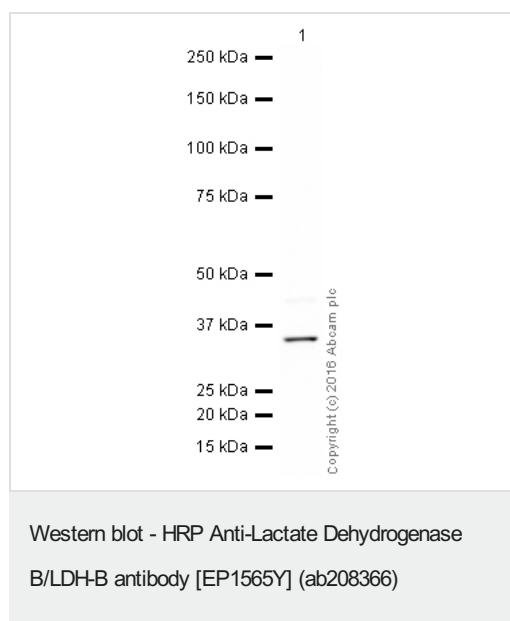
The application notes include recommended starting dilutions; optimal dilutions/concentrations should be determined by the end user.

Application	Abreviews	Notes
WB		1/5000. Detects a band of approximately 35 kDa (predicted molecular weight: 37 kDa).

Target

Pathway	Fermentation; pyruvate fermentation to lactate; (S)-lactate from pyruvate: step 1/1.
Involvement in disease	Note=Defects in LDHB result in deficiency of lactate dehydrogenase, a condition with no clear symptomatic consequences. Lactate dehydrogenase deficiency can probably be considered a non-disease.
Sequence similarities	Belongs to the LDH/MDH superfamily. LDH family.
Cellular localization	Cytoplasm.

Images



HRP Anti-Lactate Dehydrogenase B/LDH-B antibody [EP1565Y] (ab208366) at 1/5000 dilution + HeLa whole cell lysate ([ab150035](#)) at 10 µg

Developed using the ECL technique.

Performed under reducing conditions.

Predicted band size: 37 kDa

Observed band size: 35 kDa

Exposure time: 30 seconds

This blot was produced using a 4-12% Bis-tris gel under the MOPS buffer system. The gel was run at 200V for 50 minutes before being transferred onto a Nitrocellulose membrane at 30V for 70 minutes. The membrane was then blocked for an hour using 3% milk before being incubated with ab208366 overnight at 4°C. Antibody binding was visualised using ECL development solution [ab133406](#).

Why choose a recombinant antibody?



Research with confidence
Consistent and reproducible results



Long-term and scalable supply
Recombinant technology



Success from the first experiment
Confirmed specificity



Ethical standards compliant
Animal-free production

HRP Anti-Lactate Dehydrogenase B/LDH-B antibody
[EP1565Y] (ab208366)

Please note: All products are "FOR RESEARCH USE ONLY. NOT FOR USE IN DIAGNOSTIC PROCEDURES"

Our Abpromise to you: Quality guaranteed and expert technical support

- Replacement or refund for products not performing as stated on the datasheet
- Valid for 12 months from date of delivery
- Response to your inquiry within 24 hours
- We provide support in Chinese, English, French, German, Japanese and Spanish
- Extensive multi-media technical resources to help you
- We investigate all quality concerns to ensure our products perform to the highest standards

If the product does not perform as described on this datasheet, we will offer a refund or replacement. For full details of the Abpromise, please visit <https://www.abcam.com/abpromise> or contact our technical team.

Terms and conditions

- Guarantee only valid for products bought direct from Abcam or one of our authorized distributors