


Product datasheet

HRP Anti-MSI2 antibody [EP1305Y] ab199252

Recombinant **RabMAb**

2 Images

Overview

Product name	HRP Anti-MSI2 antibody [EP1305Y]
Description	HRP Rabbit monoclonal [EP1305Y] to MSI2
Host species	Rabbit
Conjugation	HRP
Tested applications	Suitable for: WB
Species reactivity	Reacts with: Human Predicted to work with: Mouse, Rat 
Immunogen	Synthetic peptide. This information is proprietary to Abcam and/or its suppliers.
Epitope	Based on the immunogen sequence for this antibody, it is not predicted to detect the shorter isoforms of MSI2.
Positive control	WB: SW480 whole cell lysate.
General notes	Our RabMAb [®] technology is a patented hybridoma-based technology for making rabbit monoclonal antibodies. For details on our patents, please refer to RabMAb[®] patents .

Properties

Form	Liquid
Storage instructions	Shipped at 4°C. Store at +4°C short term (1-2 weeks). Upon delivery aliquot. Store at -20°C. Avoid freeze / thaw cycle. Store In the Dark.
Storage buffer	pH: 7.40 Preservative: 0.1% Proclin 300 Solution Constituents: PBS, 30% Glycerol (glycerin, glycerine), 1% BSA
Purity	Protein A purified
Clonality	Monoclonal
Clone number	EP1305Y
Isotype	IgG

Applications

The Abpromise guarantee

Our **Abpromise guarantee** covers the use of ab199252 in the following tested applications.

The application notes include recommended starting dilutions; optimal dilutions/concentrations should be determined by the end user.

Application	Abreviews	Notes
WB		1/5000. Detects a band of approximately 39,37 kDa (predicted molecular weight: 35 kDa).

Target

Function

RNA binding protein that regulates the expression of target mRNAs at the translation level. May play a role in the proliferation and maintenance of stem cells in the central nervous system.

Tissue specificity

Ubiquitous; detected at low levels.

Involvement in disease

Note=Chromosomal aberrations involving MSI2 may contribute to disease progression in chronic myeloid leukemia. Translocation t(7;17)(p15;q23) with HOXA9; translocation t(7;17)(q32-34;q23).

Sequence similarities

Belongs to the Musashi family.
Contains 2 RRM (RNA recognition motif) domains.

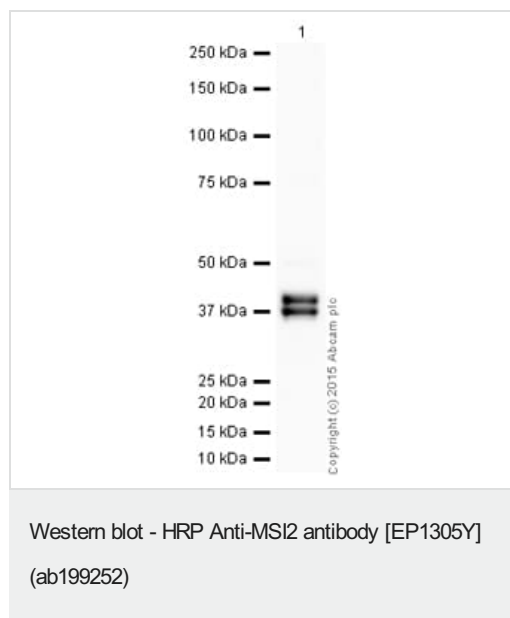
Post-translational modifications

Phosphorylated.

Cellular localization

Cytoplasm. Associated with polysomes.

Images



HRP Anti-MSI2 antibody [EP1305Y] (ab199252) at 1/5000 dilution
+ SW480 (Human colon adenocarcinoma cell line) Whole Cell
Lysate at 20 µg

Developed using the ECL technique.

Performed under reducing conditions.





Predicted band size: 35 kDa

Observed band size: 37,39 kDa

Exposure time: 8 minutes

This blot was produced using a 4-12% Bis-tris gel under the MOPS buffer system. The gel was run at 200V for 50 minutes before being transferred onto a Nitrocellulose membrane at 30V for 70 minutes. The membrane was then blocked for an hour using 3% milk before being incubated with ab199252 overnight at 4°C. Antibody binding

Why choose a recombinant antibody?

 Research with confidence Consistent and reproducible results	 Long-term and scalable supply Recombinant technology
 Success from the first experiment Confirmed specificity	 Ethical standards compliant Animal-free production

HRP Anti-MSI2 antibody [EP1305Y] (ab199252)

Please note: All products are "FOR RESEARCH USE ONLY. NOT FOR USE IN DIAGNOSTIC PROCEDURES"

Our Abpromise to you: Quality guaranteed and expert technical support

- Replacement or refund for products not performing as stated on the datasheet
- Valid for 12 months from date of delivery
- Response to your inquiry within 24 hours
- We provide support in Chinese, English, French, German, Japanese and Spanish
- Extensive multi-media technical resources to help you
- We investigate all quality concerns to ensure our products perform to the highest standards

If the product does not perform as described on this datasheet, we will offer a refund or replacement. For full details of the Abpromise, please visit <https://www.abcam.com/abpromise> or contact our technical team.

Terms and conditions

- Guarantee only valid for products bought direct from Abcam or one of our authorized distributors