


## Product datasheet

# HRP Anti-pan Cadherin antibody [mAbcam22744] ab197725

[1 Image](#)

### Overview

|                            |   |
|----------------------------|---|
| <b>Product name</b>        | HRP Anti-pan Cadherin antibody [mAbcam22744]  |
| <b>Description</b>         | HRP Mouse monoclonal [mAbcam22744] to pan Cadherin  |
| <b>Host species</b>        | Mouse   |
| <b>Conjugation</b>         | HRP   |
| <b>Tested applications</b> | <b>Suitable for:</b> WB   |
| <b>Species reactivity</b>  | <b>Reacts with:</b> Mouse, Rat, Human<br><b>Predicted to work with:</b> Chicken, Dog, Xenopus laevis, Zebrafish    |
| <b>Immunogen</b>           | Synthetic peptide. This information is proprietary to Abcam and/or its suppliers.   |
| <b>Positive control</b>    | WB: Rat, mouse and human heart tissue lysates.  |
| <b>General notes</b>       | <p>The Life Science industry has been in the grips of a reproducibility crisis for a number of years. Abcam is leading the way in addressing this with our range of recombinant monoclonal antibodies and knockout edited cell lines for gold-standard validation. Please check that this product meets your needs before purchasing.</p> <p>If you have any questions, special requirements or concerns, please send us an inquiry and/or contact our Support team ahead of purchase. Recommended alternatives for this product can be found below, along with publications, customer reviews and Q&amp;As</p> |

### Properties

|                             |  |
|-----------------------------|--|
| <b>Form</b>                 | Liquid   |
| <b>Storage instructions</b> | Shipped at 4°C. Store at +4°C short term (1-2 weeks). Upon delivery aliquot. Store at -20°C. Stable for 12 months at -20°C. Store In the Dark. |
| <b>Storage buffer</b>       | pH: 7.40<br>Preservative: 0.1% Proclin 300 Solution<br>Constituents: 30% Glycerol (glycerin, glycerine), 1% BSA, PBS                           |
| <b>Purity</b>               | Affinity purified  |
| <b>Clonality</b>            | Monoclonal   |
| <b>Clone number</b>         | mAbcam22744  |

|                         |            |
|-------------------------|------------|
| <b>Myeloma</b>          | Sp2/0-Ag14 |
| <b>Isotype</b>          | IgG1       |
| <b>Light chain type</b> | kappa      |

### Applications

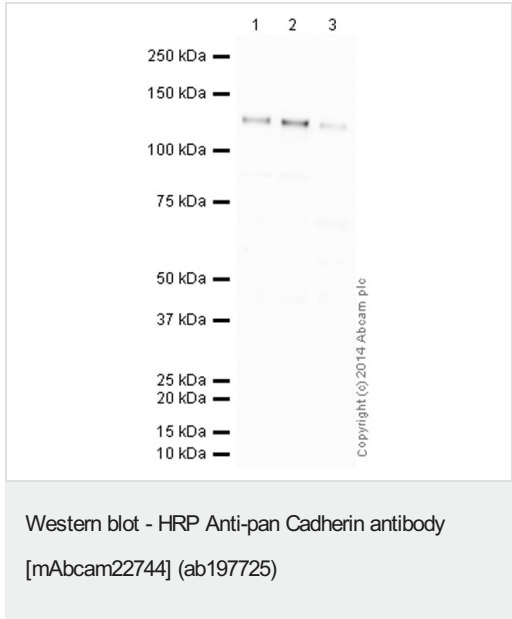
**The Abpromise guarantee** Our **Abpromise guarantee** covers the use of ab197725 in the following tested applications. The application notes include recommended starting dilutions; optimal dilutions/concentrations should be determined by the end user.

| Application | Abreviews | Notes  |
|-------------|-----------|--|
| WB          |           | 1/5000. Detects a band of approximately 125 kDa (predicted molecular weight: 125 kDa). |

### Target

**Relevance** Cadherins are members of a multigene family of single chain glycoprotein receptors mediating calcium dependent cell-cell adhesion. They play an important role in the growth and development of cells via the mechanisms of control of tissue architecture and the maintenance of tissue integrity. Cadherins are expressed in a tissue specific manner and and are required for assembly of cells into solid tissue. Individual cadherin molecules are known to co-operate with each other to form a linear cell adhesion zipper. In adhesion junctions cadherins are bound to beta and gamma catenins which in turn bind to alpha catenin, an actin binding protein. Cadherins play an important part in tumor invasion and metastasis.

### Images



**All lanes :** HRP Anti-pan Cadherin antibody [mAbcam22744] (ab197725) at 1/5000 dilution

- Lane 1 :** Heart (Rat) Tissue Lysate
- Lane 2 :** Heart (Mouse) Tissue Lysate
- Lane 3 :** Heart (Human) Tissue Lysate - adult normal tissue

Lysates/proteins at 20 µg per lane.

Developed using the ECL technique.

Performed under reducing conditions.

**Predicted band size:** 125 kDa

**Observed band size:** 125 kDa

**Exposure time:** 1 minute

This blot was produced using a 4-12% Bis-tris gel under the MOPS buffer system. The gel was run at 200V for 50 minutes before being transferred onto a Nitrocellulose membrane at 30V for 70 minutes. The membrane was then blocked for an hour using 2% Bovine Serum Albumin before being incubated with ab197725 overnight at 4°C. Antibody binding was visualised using ECL development solution **ab133406**.

**Please note:** All products are "FOR RESEARCH USE ONLY. NOT FOR USE IN DIAGNOSTIC PROCEDURES"

### **Our Abpromise to you: Quality guaranteed and expert technical support**

---

- Replacement or refund for products not performing as stated on the datasheet
- Valid for 12 months from date of delivery
- Response to your inquiry within 24 hours
- We provide support in Chinese, English, French, German, Japanese and Spanish
- Extensive multi-media technical resources to help you
- We investigate all quality concerns to ensure our products perform to the highest standards

If the product does not perform as described on this datasheet, we will offer a refund or replacement. For full details of the Abpromise, please visit <https://www.abcam.com/abpromise> or contact our technical team.

### **Terms and conditions**

---

- Guarantee only valid for products bought direct from Abcam or one of our authorized distributors