


Product datasheet

HRP Anti-Rab4 antibody [EPR3042] - Early Endosome Marker ab199205

Recombinant RabMAb

[3 Images](#)

Overview

Product name	HRP Anti-Rab4 antibody [EPR3042] - Early Endosome Marker
Description	HRP Rabbit monoclonal [EPR3042] to Rab4 - Early Endosome Marker
Host species	Rabbit
Conjugation	HRP
Tested applications	Suitable for: WB Unsuitable for: IHC-P
Species reactivity	Reacts with: Human Predicted to work with: Mouse, Rat 
Immunogen	Synthetic peptide. This information is proprietary to Abcam and/or its suppliers.
Positive control	WB: MCF-7 Whole Cell and Human Fetal Brain tissue lysates.

Properties

Form	Liquid
Storage instructions	Shipped at 4°C. Store at +4°C short term (1-2 weeks). Upon delivery aliquot. Store at -20°C. Avoid freeze / thaw cycle. Store In the Dark.
Storage buffer	pH: 7.40 Preservative: 0.1% Proclin 300 Solution Constituents: 30% Glycerol (glycerin, glycerine), PBS, 1% BSA
Purity	Protein A purified
Clonality	Monoclonal
Clone number	EPR3042
Isotype	IgG

Applications

The **Abpromise guarantee** Our **Abpromise guarantee** covers the use of ab199205 in the following tested applications.

The application notes include recommended starting dilutions; optimal dilutions/concentrations should be determined by the end user.

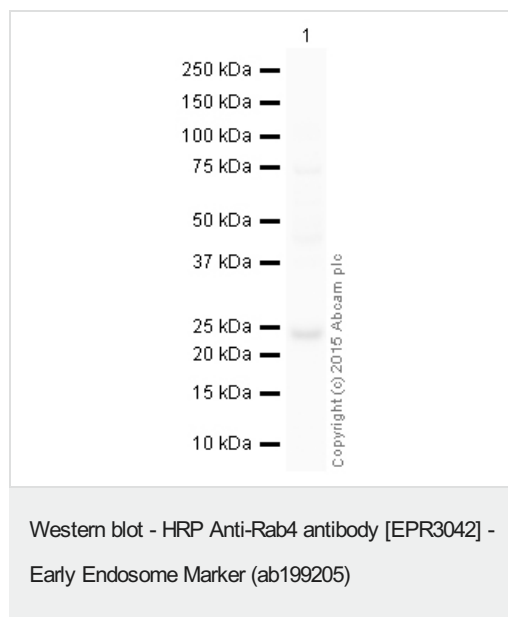
Application	Abreviews	Notes
WB		1/5000. Detects a band of approximately 24 kDa (predicted molecular weight: 24 kDa).

Application notes Is unsuitable for IHC-P.

Target

Function	Protein transport. Probably involved in vesicular traffic.
Sequence similarities	Belongs to the small GTPase superfamily. Rab family.
Post-translational modifications	Phosphorylated by CDK1 kinase during mitosis.
Cellular localization	Membrane. Cytoplasm. Generally associated with membranes. Cytoplasmic when phosphorylated by CDK1.

Images



HRP Anti-Rab4 antibody [EPR3042] - Early Endosome Marker (ab199205) at 1/5000 dilution + MCF-7 (Human breast adenocarcinoma cell line) Whole Cell Lysate at 10 µg

Developed using the ECL technique.

Performed under reducing conditions.

Predicted band size: 24 kDa

Observed band size: 24 kDa

Exposure time: 30 seconds

This blot was produced using a 4-12% Bis-tris gel under the MES buffer system. The gel was run at 200V for 35 minutes before being transferred onto a Nitrocellulose membrane at 30V for 70 minutes. The membrane was then blocked for an hour using 2% Bovine Serum Albumin before being incubated with ab199205 overnight at 4°C. Antibody binding was visualised using ECL development solution [ab133406](#).



Western blot - HRP Anti-Rab4 antibody [EPR3042] - Early Endosome Marker (ab199205)

HRP Anti-Rab4 antibody [EPR3042] - Early Endosome Marker (ab199205) at 1/5000 dilution + Fetal Liver (Human) Normal Tissue Lysate at 10 µg

Developed using the ECL technique.

Performed under reducing conditions.

Predicted band size: 24 kDa

Observed band size: 24 kDa

Exposure time: 10 seconds

This blot was produced using a 4-12% Bis-tris gel under the MES buffer system. The gel was run at 200V for 35 minutes before being transferred onto a Nitrocellulose membrane at 30V for 70 minutes. The membrane was then blocked for an hour using 2% Bovine Serum Albumin before being incubated with ab199205 overnight at 4°C. Antibody binding was visualised using ECL development solution [ab133406](#).

Why choose a recombinant antibody?



Research with confidence
Consistent and reproducible results



Long-term and scalable supply
Recombinant technology



Success from the first experiment
Confirmed specificity



Ethical standards compliant
Animal-free production

HRP Anti-Rab4 antibody [EPR3042] - Early Endosome Marker (ab199205)

Please note: All products are "FOR RESEARCH USE ONLY. NOT FOR USE IN DIAGNOSTIC PROCEDURES"

Our Abpromise to you: Quality guaranteed and expert technical support

- Replacement or refund for products not performing as stated on the datasheet
- Valid for 12 months from date of delivery
- Response to your inquiry within 24 hours
- We provide support in Chinese, English, French, German, Japanese and Spanish
- Extensive multi-media technical resources to help you
- We investigate all quality concerns to ensure our products perform to the highest standards

If the product does not perform as described on this datasheet, we will offer a refund or replacement. For full details of the Abpromise, please visit <https://www.abcam.com/abpromise> or contact our technical team.

Terms and conditions

- Guarantee only valid for products bought direct from Abcam or one of our authorized distributors