

HRP Anti-RFP antibody ab34767

★★★★☆ [3 Abreviews](#) [8 References](#) [1 Image](#)

Overview

Product name	HRP Anti-RFP antibody
Description	HRP Rabbit polyclonal to RFP
Host species	Rabbit
Conjugation	HRP
Specificity	ab34767 is designed to detect RFP and its variants.
Tested applications	Suitable for: WB
Species reactivity	Reacts with: Species independent
Immunogen	Fusion protein The immunogen is a Red Fluorescent Protein (RFP) fusion protein corresponding to the full length amino acid sequence (234aa) derived from the mushroom polyp coral <i>Discosoma</i> .
General notes	<p>The Life Science industry has been in the grips of a reproducibility crisis for a number of years. Abcam is leading the way in addressing this with our range of recombinant monoclonal antibodies and knockout edited cell lines for gold-standard validation. Please check that this product meets your needs before purchasing.</p> <p>If you have any questions, special requirements or concerns, please send us an inquiry and/or contact our Support team ahead of purchase. Recommended alternatives for this product can be found below, along with publications, customer reviews and Q&As</p>

Properties

Form	Liquid
Storage instructions	Shipped at 4°C. Store at +4°C.
Storage buffer	pH: 6.50 Preservative: 0.01% Gentamicin sulphate Constituents: 1% BSA, 0.42% Tripotassium orthophosphate, 0.87% Sodium chloride
Purity	Immunogen affinity purified
Purification notes	immunoaffinity chromatography was followed by solid phase adsorption to remove any unwanted reactivities.
Clonality	Polyclonal
Isotype	IgG

Applications

The Abpromise guarantee

Our **Abpromise guarantee** covers the use of ab34767 in the following tested applications.

The application notes include recommended starting dilutions; optimal dilutions/concentrations should be determined by the end user.

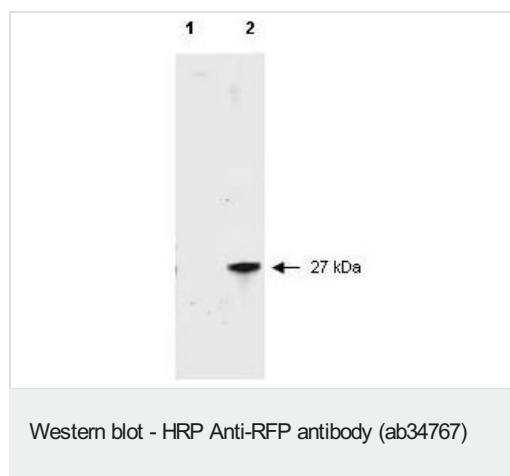
Application	Abreviews	Notes
WB	★★★★★ (2)	1/1000 - 1/5000. Detects a band of approximately 27 kDa.

Target

Relevance

Fluorescent proteins have become a useful and ubiquitous tool for making chimeric proteins, where they function as a fluorescent protein tag. Typically they tolerate N- and C-terminal fusion to a broad variety of proteins. They have been expressed in most known cell types and are used as a noninvasive fluorescent marker in living cells and organisms. They enable a wide range of applications where they have functioned as a cell lineage tracer, reporter of gene expression, or as a measure of protein-protein interactions.

Images



All lanes : HRP Anti-RFP antibody (ab34767) at 1/2500 dilution

Lane 1 : HeLa cell extract

Lane 2 : HeLa lysate

Lysates/proteins at 10 µg per lane.

Secondary

All lanes : Goat-a-Rabbit IgG [H&L] at 1/5000 dilution

Please note: All products are "FOR RESEARCH USE ONLY. NOT FOR USE IN DIAGNOSTIC PROCEDURES"

Our Abpromise to you: Quality guaranteed and expert technical support

- Replacement or refund for products not performing as stated on the datasheet
- Valid for 12 months from date of delivery
- Response to your inquiry within 24 hours
- We provide support in Chinese, English, French, German, Japanese and Spanish
- Extensive multi-media technical resources to help you
- We investigate all quality concerns to ensure our products perform to the highest standards

If the product does not perform as described on this datasheet, we will offer a refund or replacement. For full details of the Abpromise, please visit <https://www.abcam.com/abpromise> or contact our technical team.

Terms and conditions

- Guarantee only valid for products bought direct from Abcam or one of our authorized distributors