

Product datasheet

HRP Anti-SEN1 antibody [EPR3844] ab201814

Recombinant RabMAb

2 Images

Overview

| | |
|---------------------|---|
| Product name | HRP Anti-SEN1 antibody [EPR3844] |
| Description | HRP Rabbit monoclonal [EPR3844] to SEN1 |
| Host species | Rabbit |
| Conjugation | HRP |
| Tested applications | Suitable for: WB |
| Species reactivity | Reacts with: Human |
| Immunogen | Synthetic peptide. This information is proprietary to Abcam and/or its suppliers. |
| Positive control | WB: HUVEC, Jurkat, Daudi and U87-MG whole cell lysates |
| General notes | Our RabMAb [®] technology is a patented hybridoma-based technology for making rabbit monoclonal antibodies. For details on our patents, please refer to RabMAb[®] patents . |

Properties

| | |
|----------------------|--|
| Form | Liquid |
| Storage instructions | Shipped at 4°C. Store at +4°C short term (1-2 weeks). Upon delivery aliquot. Store at -20°C. Stable for 12 months at -20°C. Store In the Dark. |
| Storage buffer | pH: 7.40 Preservative: 0.1% Proclin 300 Solution Constituents: 30% Glycerol (glycerin, glycerine), PBS, 1% BSA |
| Purity | Protein A purified |
| Clonality | Monoclonal |
| Clone number | EPR3844 |
| Isotype | IgG |

Applications

The Abpromise guarantee Our [Abpromise guarantee](#) covers the use of ab201814 in the following tested applications. The application notes include recommended starting dilutions; optimal dilutions/concentrations should be determined by the end user.

| Application | Abreviews | Notes |
|-------------|-----------|--|
| WB | | 1/5000. Detects a band of approximately 73 kDa (predicted molecular weight: 73 kDa). |

Target

Function

Protease that catalyzes two essential functions in the SUMO pathway: processing of full-length SUMO1, SUMO2 and SUMO3 to their mature forms and deconjugation of SUMO1, SUMO2 and SUMO3 from targeted proteins. Deconjugates SUMO1 from HIPK2. Deconjugates SUMO1 from HDAC1, which decreases its transcriptional repression activity.

Tissue specificity

Highly expressed in testis. Expressed at lower levels in thymus, pancreas, spleen, liver, ovary and small intestine.

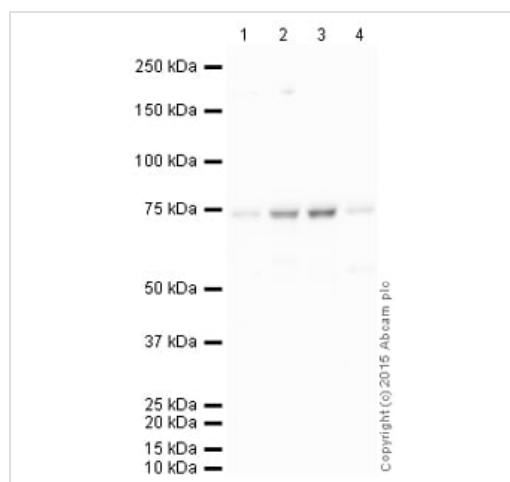
Sequence similarities

Belongs to the peptidase C48 family.

Cellular localization

Nucleus. Cytoplasm. Shuttles between cytoplasm and nucleus.

Images



Western blot - HRP Anti-SEN1 antibody
[EPR3844] (ab201814)

All lanes : HRP Anti-SEN1 antibody [EPR3844] (ab201814) at 1/5000 dilution

Lane 1 : HUVEC (Human Umbilical Vein Endothelial Cell) Whole Cell Lysate

Lane 2 : Jurkat (Human T cell lymphoblast-like cell line) Whole Cell Lysate

Lane 3 : Daudi (Human Burkitt's lymphoma cell line) Whole Cell Lysate

Lane 4 : U-87 MG (Human glioblastoma astrocytoma) Whole Cell Lysate

Lysates/proteins at 10 µg per lane.

Performed under reducing conditions.

Predicted band size: 73 kDa





Observed band size: 73 kDa

Exposure time: 8 minutes

This blot was produced using a 4-12% Bis-tris gel under the MOPS buffer system. The gel was run at 200V for 50 minutes before being

transferred onto a Nitrocellulose membrane at 30V for 70 minutes. The membrane was then blocked for an hour using 3% milk before being incubated with ab201814 overnight at 4°C. Antibody binding was visualised using ECL development solution **ab133406**.

Why choose a recombinant antibody?

| | |
|--|--|
|  <p>Research with confidence Consistent and reproducible results</p> |  <p>Long-term and scalable supply Recombinant technology</p> |
|  <p>Success from the first experiment Confirmed specificity</p> |  <p>Ethical standards compliant Animal-free production</p> |

HRP Anti-SEN1 antibody [EPR3844] (ab201814)

Please note: All products are "FOR RESEARCH USE ONLY. NOT FOR USE IN DIAGNOSTIC PROCEDURES"

Our Abpromise to you: Quality guaranteed and expert technical support

- Replacement or refund for products not performing as stated on the datasheet
- Valid for 12 months from date of delivery
- Response to your inquiry within 24 hours
- We provide support in Chinese, English, French, German, Japanese and Spanish
- Extensive multi-media technical resources to help you
- We investigate all quality concerns to ensure our products perform to the highest standards

If the product does not perform as described on this datasheet, we will offer a refund or replacement. For full details of the Abpromise, please visit <https://www.abcam.com/abpromise> or contact our technical team.

Terms and conditions

- Guarantee only valid for products bought direct from Abcam or one of our authorized distributors