


Product datasheet

HRP Anti-UQCRC2 antibody [13G12AF12BB11] ab197954

2 Images

Overview

Product name	HRP Anti-UQCRC2 antibody [13G12AF12BB11]
Description	HRP Mouse monoclonal [13G12AF12BB11] to UQCRC2
Host species	Mouse
Conjugation	HRP
Tested applications	Suitable for: WB, IHC-P
Species reactivity	Reacts with: Human Predicted to work with: Mouse, Rat, Cow 
Immunogen	The details of the immunogen for this antibody are not available.
Positive control	WB: Human skeletal muscle tissue lysate and Ramos whole cell lysate. IHC-P: Normal human colon tissue.
General notes	<p>The Life Science industry has been in the grips of a reproducibility crisis for a number of years. Abcam is leading the way in addressing this with our range of recombinant monoclonal antibodies and knockout edited cell lines for gold-standard validation. Please check that this product meets your needs before purchasing.</p> <p>If you have any questions, special requirements or concerns, please send us an inquiry and/or contact our Support team ahead of purchase. Recommended alternatives for this product can be found below, along with publications, customer reviews and Q&As</p>

Properties

Form	Liquid
Storage instructions	Shipped at 4°C. Store at +4°C short term (1-2 weeks). Upon delivery aliquot. Store at -20°C. Avoid freeze / thaw cycle. Store In the Dark.
Storage buffer	pH: 7.40 Preservative: 0.1% Proclin 300 Solution Constituents: 30% Glycerol (glycerin, glycerine), 1% BSA, PBS
Purity	Affinity purified
Clonality	Monoclonal
Clone number	13G12AF12BB11
Isotype	IgG1

Light chain type

kappa

Applications

The Abpromise guarantee

Our **Abpromise guarantee** covers the use of ab197954 in the following tested applications.

The application notes include recommended starting dilutions; optimal dilutions/concentrations should be determined by the end user.

Application	Abreviews	Notes
WB		1/5000. Detects a band of approximately 48 kDa (predicted molecular weight: 48 kDa).
IHC-P		1/500. Perform heat mediated antigen retrieval with citrate buffer pH 6 before commencing with IHC staining protocol.

Target

Function

This is a component of the ubiquinol-cytochrome c reductase complex (complex III or cytochrome b-c1 complex), which is part of the mitochondrial respiratory chain. The core protein 2 is required for the assembly of the complex.

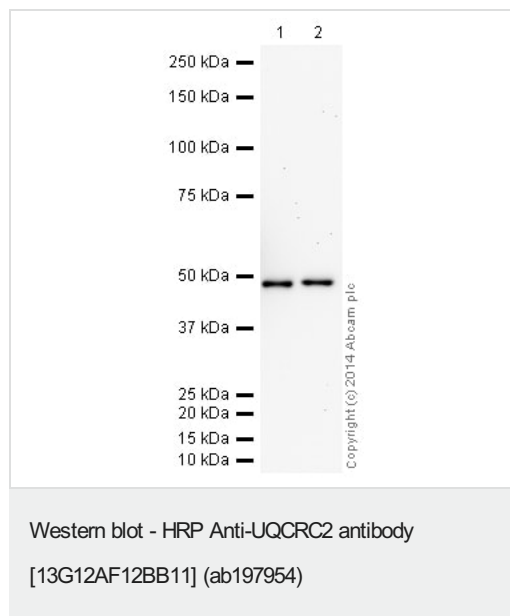
Sequence similarities

Belongs to the peptidase M16 family. UQCRC2/QCR2 subfamily.

Cellular localization

Mitochondrion inner membrane.

Images



All lanes : HRP Anti-UQCRC2 antibody [13G12AF12BB11] (ab197954) at 1/5000 dilution

Lane 1 : Human skeletal muscle tissue lysate - total protein (**ab29330**)

Lane 2 : Ramos (Human Burkitt's lymphoma cell line) Whole Cell Lysate

Lysates/proteins at 10 µg per lane.

Developed using the ECL technique.

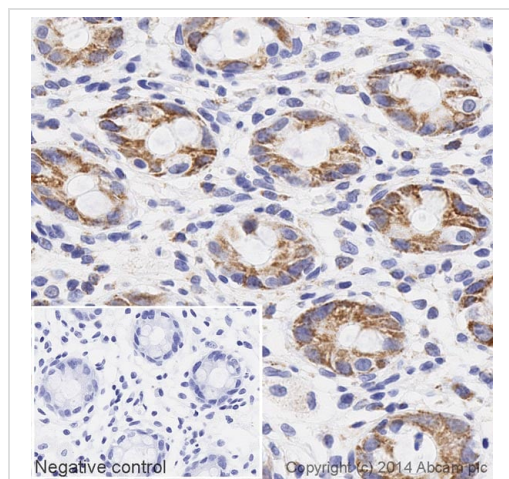
Performed under reducing conditions.

Predicted band size: 48 kDa

Observed band size: 48 kDa

Exposure time: 20 minutes

This blot was produced using a 4-12% Bis-tris gel under the MOPS buffer system. The gel was run at 200V for 50 minutes before being transferred onto a Nitrocellulose membrane at 30V for 70 minutes. The membrane was then blocked for an hour using 3% milk before being incubated with ab197954 overnight at 4°C. Antibody binding was visualised using ECL development solution **ab133406**



Immunohistochemistry (Formalin/PFA-fixed paraffin-embedded sections) - HRP Anti-UQCRC2 antibody [13G12AF12BB11] (ab197954)

IHC image of UQCRC2 staining in a section of formalin-fixed paraffin-embedded normal human colon*, performed on a Leica BOND. The section was pre-treated using heat mediated antigen retrieval with sodium citrate buffer (pH6, epitope retrieval solution 1) for 20mins. The section was then incubated with ab197954, 1/500 dilution, for 15 mins at room temperature. DAB was used as the chromogen. The section was then counterstained with haematoxylin and mounted with DPX. The inset negative control image is taken from an identical assay without primary antibody.

For other IHC staining systems (automated and non-automated) customers should optimize variable parameters such as antigen retrieval conditions, primary antibody concentration and antibody incubation times.

*Tissue obtained from the Human Research Tissue Bank, supported by the NIHR Cambridge Biomedical Research Centre

Please note: All products are "FOR RESEARCH USE ONLY. NOT FOR USE IN DIAGNOSTIC PROCEDURES"

Our Abpromise to you: Quality guaranteed and expert technical support

- Replacement or refund for products not performing as stated on the datasheet
- Valid for 12 months from date of delivery
- Response to your inquiry within 24 hours
- We provide support in Chinese, English, French, German, Japanese and Spanish
- Extensive multi-media technical resources to help you
- We investigate all quality concerns to ensure our products perform to the highest standards

If the product does not perform as described on this datasheet, we will offer a refund or replacement. For full details of the Abpromise, please visit <https://www.abcam.com/abpromise> or contact our technical team.

Terms and conditions

- Guarantee only valid for products bought direct from Abcam or one of our authorized distributors