

Product datasheet

Anti-HSV1 + HSV2 gB antibody [10B7] α b6506

[32 References](#) [2 Images](#)

Overview

Product name	Anti-HSV1 + HSV2 gB antibody [10B7]
Description	Mouse monoclonal [10B7] to HSV1 + HSV2 gB
Host species	Mouse
Tested applications	Suitable for: WB, ELISA, ICC/IF
Species reactivity	Reacts with: Herpes simplex virus, Human herpesvirus 2
Immunogen	Tissue, cells or virus corresponding to HSV1 + HSV2 gB.
Positive control	African Green Monkey Kidney cultured cells(Vero), HSV-1 is strain Machtyre, HSV-2 is strain G.
General notes	<p>The Life Science industry has been in the grips of a reproducibility crisis for a number of years. Abcam is leading the way in addressing this with our range of recombinant monoclonal antibodies and knockout edited cell lines for gold-standard validation. Please check that this product meets your needs before purchasing.</p> <p>If you have any questions, special requirements or concerns, please send us an inquiry and/or contact our Support team ahead of purchase. Recommended alternatives for this product can be found below, along with publications, customer reviews and Q&As</p>

Properties

Form	Liquid
Storage instructions	Shipped at 4°C. Store at +4°C.
Storage buffer	pH: 7.40 Constituent: 100% PBS
Purity	Protein A purified
Clonality	Monoclonal
Clone number	10B7
Myeloma	NS1/1-Ag4-1
Isotype	IgG1
Light chain type	kappa

Applications

The Abpromise guarantee

Our **Abpromise guarantee** covers the use of ab6506 in the following tested applications.

The application notes include recommended starting dilutions; optimal dilutions/concentrations should be determined by the end user.

Application	Abreviews	Notes
WB		Use at an assay dependent concentration. 1/1600 (HSV2) - 1/12800 (HSV1).
ELISA		1/102400.
ICC/IF		Use at an assay dependent concentration. 1/6400 (HSV1) - 1/25600 (HSV2).

Target

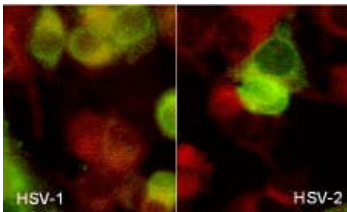
Relevance

There are two main types of Herpes Simplex Virus (HSV), 1 and 2. The primary difference between the two types is in where they typically establish latency in the body. HSV1 usually establishes latency in the trigeminal ganglion, a collection of nerve cells near the ear. From there, it tends to recur on the lower lip or face causing cold sores. HSV2 usually resides in the sacral ganglion at the base of the spine. From there, it recurs in the genital area but even this difference is not absolute as in rare cases it can infect any part of the body, including the eyes. Up to 30% of genital herpes are also caused by HSV1. Both HSV1 and 2 are highly contagious through contact.

Cellular localization

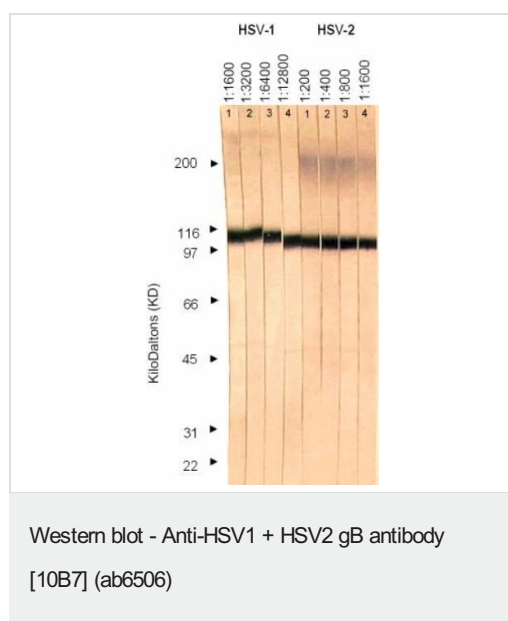
Virus envelope

Images



Green: immunofluorescence staining of HSV1 or HSV2 of Vero (African green monkey) cells (HSV-1 is strain MacIntyre, HSV-2 is strain G) on slides, using ab6506 (1:100) (secondary anti-mouse-FITC). Red: counterstain in the conjugate preparation.

Immunocytochemistry/ Immunofluorescence - Anti-HSV1 + HSV2 gB antibody [10B7] (ab6506)



Lanes 1 & 8 : Anti-HSV1 + HSV2 gB antibody [10B7] (ab6506) at 1/1600 dilution

Lane 2 : Anti-HSV1 + HSV2 gB antibody [10B7] (ab6506) at 1/3200 dilution

Lane 3 : Anti-HSV1 + HSV2 gB antibody [10B7] (ab6506) at 1/6400 dilution

Lane 4 : Anti-HSV1 + HSV2 gB antibody [10B7] (ab6506) at 1/12800 dilution

Lane 5 : Anti-HSV1 + HSV2 gB antibody [10B7] (ab6506) at 1/200 dilution

Lane 6 : Anti-HSV1 + HSV2 gB antibody [10B7] (ab6506) at 1/400 dilution

Lane 7 : Anti-HSV1 + HSV2 gB antibody [10B7] (ab6506) at 1/800 dilution

Lanes 1-4 : Vero cells infected with HSV1

Lanes 5-8 : Vero cells infected with HSV2

Performed under reducing conditions.

Please note: All products are "FOR RESEARCH USE ONLY. NOT FOR USE IN DIAGNOSTIC PROCEDURES"

Our Abpromise to you: Quality guaranteed and expert technical support

- Replacement or refund for products not performing as stated on the datasheet
- Valid for 12 months from date of delivery
- Response to your inquiry within 24 hours
- We provide support in Chinese, English, French, German, Japanese and Spanish
- Extensive multi-media technical resources to help you
- We investigate all quality concerns to ensure our products perform to the highest standards

If the product does not perform as described on this datasheet, we will offer a refund or replacement. For full details of the Abpromise, please visit <https://www.abcam.com/abpromise> or contact our technical team.

Terms and conditions

- Guarantee only valid for products bought direct from Abcam or one of our authorized distributors