

Product datasheet

Anti-HTF9C/TRMT2A antibody [1G8] ab230922

KO VALIDATED

3 Images

Overview

Product name	Anti-HTF9C/TRMT2A antibody [1G8]
Description	Mouse monoclonal [1G8] to HTF9C/TRMT2A
Host species	Mouse
Tested applications	Suitable for: IHC-P, WB
Species reactivity	Reacts with: Human
Immunogen	Recombinant full length protein corresponding to Human HTF9C/TRMT2A. (NP_073564). Produced in HEK293T cells. Database link: Q8IZ69
Positive control	WB: HeLa, MOLT-4, pCMV6-ENTRY HTF9C/TRMT2A-transfected HEK-293T whole cell lysates. IHC-P: Human testis tissue.
General notes	<p>The Life Science industry has been in the grips of a reproducibility crisis for a number of years. Abcam is leading the way in addressing this with our range of recombinant monoclonal antibodies and knockout edited cell lines for gold-standard validation. Please check that this product meets your needs before purchasing.</p> <p>If you have any questions, special requirements or concerns, please send us an inquiry and/or contact our Support team ahead of purchase. Recommended alternatives for this product can be found below, along with publications, customer reviews and Q&As</p>

Properties

Form	Liquid
Storage instructions	Shipped at 4°C. Store at +4°C short term (1-2 weeks). Upon delivery aliquot. Store at -20°C long term. Avoid freeze / thaw cycle.
Storage buffer	Preservative: 0.02% Sodium azide Constituents: PBS, 1% BSA, 50% Glycerol (glycerin, glycerine)
Purity	Protein A/G purified
Clonality	Monoclonal
Clone number	1G8
Isotype	IgG1

Applications

The Abpromise guarantee

Our **Abpromise guarantee** covers the use of ab230922 in the following tested applications.

The application notes include recommended starting dilutions; optimal dilutions/concentrations should be determined by the end user.

Application	Abreviews	Notes
IHC-P		Use a concentration of 10 µg/ml. Perform heat mediated antigen retrieval before commencing with IHC staining protocol.
WB		1/2000. Predicted molecular weight: 69 kDa.

Target

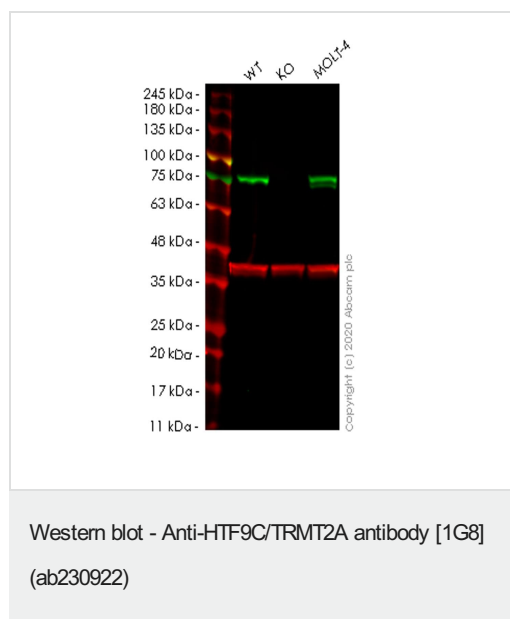
Function

May be involved in nucleic acid metabolism and/or modifications.

Sequence similarities

Contains 1 RRM (RNA recognition motif) domain.

Images



All lanes : Anti-HTF9C/TRMT2A antibody [1G8] (ab230922) at 1/500 dilution

Lane 1 : Wild-type HeLa cell lysate

Lane 2 : TRMT2A knockout HeLa cell lysate

Lane 3 : MOLT-4 cell lysate

Lysates/proteins at 20 µg per lane.

Secondary

All lanes : Goat Anti-Rabbit IgG H&L (IRDye® 680RD) preadsorbed ([ab216777](#)) at 1/10000 dilution

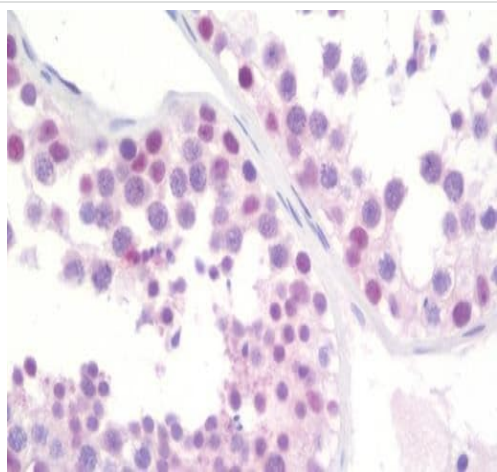
Predicted band size: 69 kDa

Observed band size: 75 kDa

Lanes 1-3: Merged signal (red and green). Green - ab230922 observed at 75 kDa. Red - loading control [ab181602](#) observed at 36 kDa.

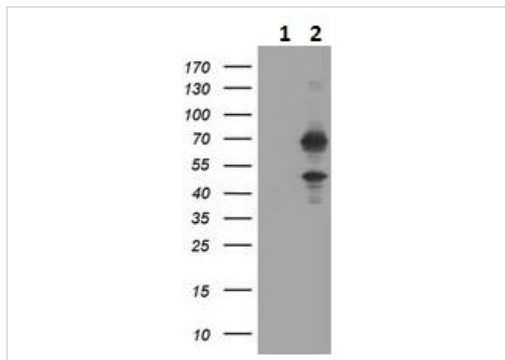
ab230922 Anti-HTF9C/TRMT2A antibody [1G8] was shown to specifically react with HTF9C/TRMT2A in wild-type HeLa cells. Loss of signal was observed when knockout cell line [ab265160](#)

(knockout cell lysate **ab258253**) was used. Wild-type and HTF9C/TRMT2A knockout samples were subjected to SDS-PAGE. ab230922 and Anti-GAPDH antibody[EPR16891] - Loading Control (**ab181602**) were incubated at room temperature for 2.5 hours at 1 in 500 dilution and 1 in 20000 dilution respectively. Blots were developed with Goat anti-Rabbit IgG H&L (IRDye® 800CW) preadsorbed (**ab216773**) and Goat anti-Mouse IgG H&L (IRDye® 680RD) preadsorbed (**ab216776**) secondary antibodies at 1 in 20000 dilution for 1 hour at room temperature before imaging.



Immunohistochemistry (Formalin/PFA-fixed paraffin-embedded sections) - Anti-HTF9C/TRMT2A antibody [1G8] (ab230922)

Formalin-fixed, paraffin-embedded human testis tissue stained for HTF9C/TRMT2A using ab230922 at 10 µg/ml in immunohistochemical analysis.



Western blot - Anti-HTF9C/TRMT2A antibody [1G8] (ab230922)

All lanes : Anti-HTF9C/TRMT2A antibody [1G8] (ab230922) at 1/2000 dilution

Lane 1 : pCMV6-ENTRY control-transfected HEK-293T (human epithelial cell line from embryonic kidney transformed with large T antigen) whole cell lysate

Lane 2 : pCMV6-ENTRY HTF9C/TRMT2A-transfected HEK-293T whole cell lysate

Lysates/proteins at 5 µg per lane.

Developed using the ECL technique.

Predicted band size: 69 kDa

Our Abpromise to you: Quality guaranteed and expert technical support

- Replacement or refund for products not performing as stated on the datasheet
- Valid for 12 months from date of delivery
- Response to your inquiry within 24 hours

- We provide support in Chinese, English, French, German, Japanese and Spanish
- Extensive multi-media technical resources to help you
- We investigate all quality concerns to ensure our products perform to the highest standards

If the product does not perform as described on this datasheet, we will offer a refund or replacement. For full details of the Abpromise, please visit <https://www.abcam.com/abpromise> or contact our technical team.

Terms and conditions

- Guarantee only valid for products bought direct from Abcam or one of our authorized distributors