

## Product datasheet

# Anti-HTF9C/TRMT2A antibody [EPR16485-54] ab205616

**KO VALIDATED** Recombinant RabMAB

8 Images

### Overview

<b>Product name</b>	Anti-HTF9C/TRMT2A antibody [EPR16485-54]
<b>Description</b>	Rabbit monoclonal [EPR16485-54] to HTF9C/TRMT2A
<b>Host species</b>	Rabbit
<b>Tested applications</b>	<b>Suitable for:</b> WB, IP, IHC-P
<b>Species reactivity</b>	<b>Reacts with:</b> Mouse, Rat, Human
<b>Immunogen</b>	Recombinant fragment. This information is proprietary to Abcam and/or its suppliers.
<b>Positive control</b>	WB: Human fetal kidney lysate; HeLa, MOLT-4, HEK293, Jurkat, HepG2, C6, PC-12, NIH/3T3 whole cell lysates. IHC-P: Human breast carcinoma tissue.
<b>General notes</b>	<p>This product is a recombinant monoclonal antibody, which offers several advantages including:</p> <ul style="list-style-type: none"><li>- High batch-to-batch consistency and reproducibility</li><li>- Improved sensitivity and specificity</li><li>- Long-term security of supply</li><li>- Animal-free production</li></ul> <p>For more information <a href="#">see here</a>.</p> <p>Our RabMAB<sup>®</sup> technology is a patented hybridoma-based technology for making rabbit monoclonal antibodies. For details on our patents, please refer to <a href="#">RabMAB<sup>®</sup> patents</a>.</p>

### Properties

<b>Form</b>	Liquid
<b>Storage instructions</b>	Shipped at 4°C. Store at +4°C short term (1-2 weeks). Upon delivery aliquot. Store at -20°C long term. Avoid freeze / thaw cycle.
<b>Storage buffer</b>	pH: 7.2 Preservative: 0.01% Sodium azide Constituents: 59% PBS, 40% Glycerol (glycerin, glycerine), 0.05% BSA
<b>Purity</b>	Protein A purified
<b>Clonality</b>	Monoclonal
<b>Clone number</b>	EPR16485-54
<b>Isotype</b>	IgG

## Applications

### The Abpromise guarantee

Our **Abpromise guarantee** covers the use of ab205616 in the following tested applications.

The application notes include recommended starting dilutions; optimal dilutions/concentrations should be determined by the end user.

Application	Abreviews	Notes
WB		1/1000. Detects a band of approximately 75 kDa (predicted molecular weight: 69 kDa).
IP		1/100.
IHC-P		1/1000. Perform heat mediated antigen retrieval with Tris/EDTA buffer pH 9.0 before commencing with IHC staining protocol.

## Target

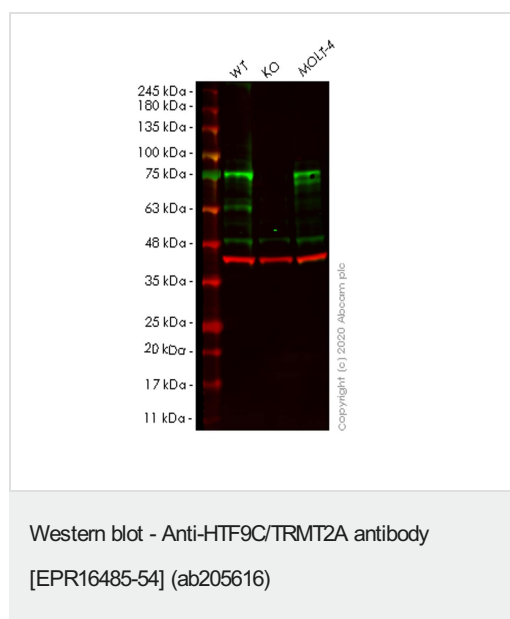
### Function

May be involved in nucleic acid metabolism and/or modifications.

### Sequence similarities

Contains 1 RRM (RNA recognition motif) domain.

## Images



**All lanes** : Anti-HTF9C/TRMT2A antibody [EPR16485-54] (ab205616) at 1/1000 dilution

**Lane 1** : Wild-type HeLa cell lysate

**Lane 2** : TRMT2A knockout HeLa cell lysate

**Lane 3** : MOLT-4 cell lysate

Lysates/proteins at 20 µg per lane.

### Secondary

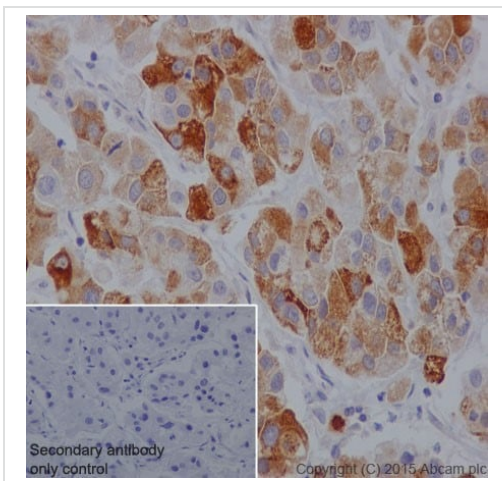
**All lanes** : Goat anti-Rabbit IgG H&L (IRDye® 800CW) preadsorbed (**ab216773**) at 1/10000 dilution

**Predicted band size:** 69 kDa

**Observed band size:** 75 kDa

**Lanes 1-3:** Merged signal (red and green). Green - ab205616 observed at 75 kDa. Red - loading control **ab8245** observed at 36 kDa.

ab205616 Anti-HTF9C/TRMT2A antibody [EPR16485-54] was shown to specifically react with HTF9C/TRMT2A in wild-type HeLa cells. Loss of signal was observed when knockout cell line **ab265160** (knockout cell lysate **ab258253**) was used. Wild-type and HTF9C/TRMT2A knockout samples were subjected to SDS-PAGE. ab205616 and Anti-GAPDH antibody [6C5] - Loading Control (**ab8245**) were incubated at room temperature for 2.5 hours at 1 in 1000 dilution and 1 in 20000 dilution respectively. Blots were developed with Goat anti-Rabbit IgG H&L (IRDye® 800CW) preadsorbed (**ab216773**) and Goat anti-Mouse IgG H&L (IRDye® 680RD) preadsorbed (**ab216776**) secondary antibodies at 1 in 20000 dilution for 1 hour at room temperature before imaging.



Immunohistochemistry (Formalin/PFA-fixed paraffin-embedded sections) - Anti-HTF9C/TRMT2A antibody [EPR16485-54] (ab205616)

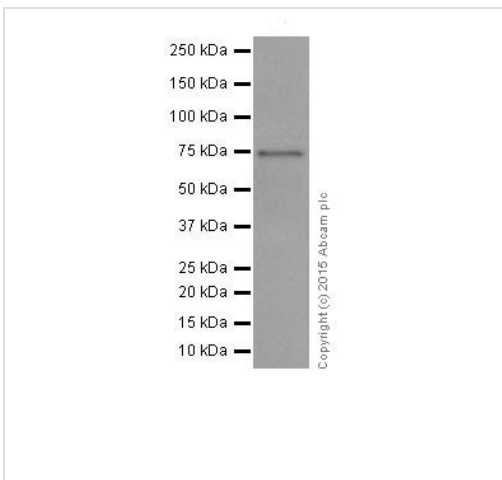
Immunohistochemical analysis of paraffin-embedded human breast carcinoma tissue labeling HTF9C/TRMT2A with ab205616 at 1/1000 dilution followed by Goat Anti-Rabbit IgG H&L (HRP) (**ab97051**) at 1/500.

Cytoplasmic staining on human breast carcinoma tissue is observed.

Counter stained with Hematoxylin.

Negative control: Used PBS instead of primary antibody with secondary antibody, **ab97051** at 1/500.

Perform heat mediated antigen retrieval with Tris/EDTA buffer pH 9.0 before commencing with IHC staining protocol.



Western blot - Anti-HTF9C/TRMT2A antibody [EPR16485-54] (ab205616)

Anti-HTF9C/TRMT2A antibody [EPR16485-54] (ab205616) at 1/1000 dilution + Human fetal kidney at 20 µg

**Secondary**

Anti-Rabbit IgG (HRP), specific to the non-reduced form of IgG at 1/10000 dilution

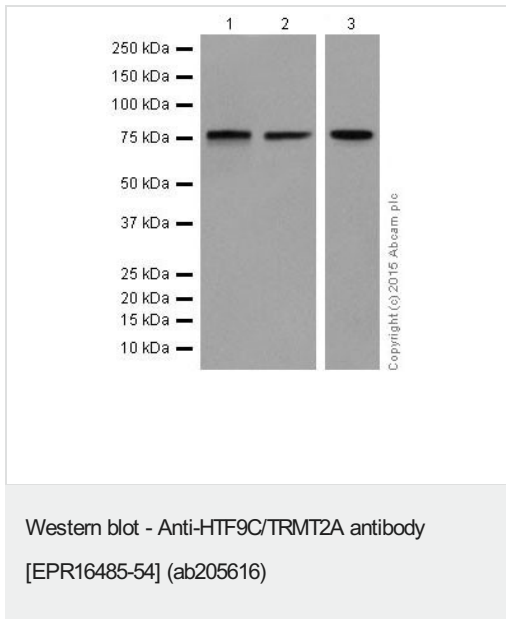
Developed using the ECL technique.

**Predicted band size:** 69 kDa

**Observed band size:** 75 kDa

**Exposure time:** 3 minutes

Blocking and diluting buffer was 5% NFDM /TBST



**All lanes :** Anti-HTF9C/TRMT2A antibody [EPR16485-54] (ab205616) at 1/5000 dilution

**Lane 1 :** MOLT-4 (Human lymphoblastic leukemia cell line) whole cell lysate

**Lane 2 :** HEK293 (Human epithelial cell line from embryonic kidney) whole cell lysate

**Lane 3 :** Jurkat (Human T cell leukemia cell line from peripheral blood) whole cell lysate

Lysates/proteins at 20 µg per lane.

### Secondary

**All lanes :** Goat Anti-Rabbit IgG H&L (HRP) (**ab97051**) at 1/100000 dilution

Developed using the ECL technique.

**Predicted band size:** 69 kDa

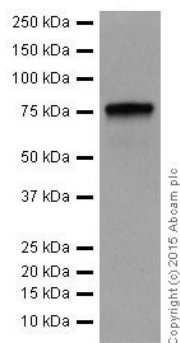
**Observed band size:** 75 kDa

**Exposure time:** 10 seconds

Blocking and diluting buffer was 5% NFDM /TBST

Exposure time Lane 1 and 2: 10 seconds

Lane 3: 1 minute



Western blot - Anti-HTF9C/TRMT2A antibody  
[EPR16485-54] (ab205616)

Anti-HTF9C/TRMT2A antibody [EPR16485-54] (ab205616) at  
1/1000 dilution + HepG2 (Human liver hepatocellular carcinoma cell  
line) whole cell lysate at 20 µg

### Secondary

Goat Anti-Rabbit IgG H&L (HRP) ([ab97051](#)) at 1/100000 dilution

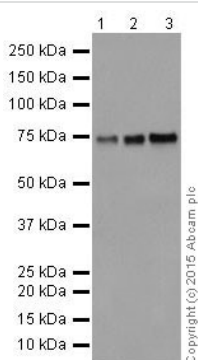
Developed using the ECL technique.

**Predicted band size:** 69 kDa

**Observed band size:** 75 kDa

**Exposure time:** 1 minute

Blocking and diluting buffer was 5% NFDM /TBST



Western blot - Anti-HTF9C/TRMT2A antibody  
[EPR16485-54] (ab205616)

**All lanes :** Anti-HTF9C/TRMT2A antibody [EPR16485-54]  
(ab205616) at 1/1000 dilution

**Lane 1 :** C6 (Rat glial tumor cell line) whole cell lysate

**Lane 2 :** PC-12 (Rat adrenal gland pheochromocytoma cell line)  
whole cell lysate

**Lane 3 :** NIH/3T3 (Mouse embryonic fibroblast cell line) whole cell  
lysate

Lysates/proteins at 10 µg per lane.

### Secondary

**All lanes :** Goat Anti-Rabbit IgG H&L (HRP) ([ab97051](#)) at  
1/100000 dilution

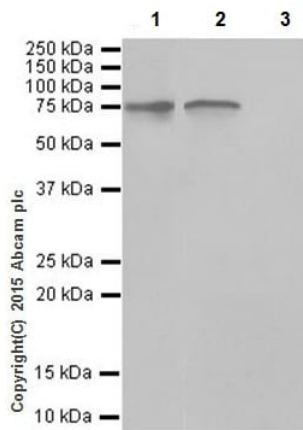
Developed using the ECL technique.

**Predicted band size:** 69 kDa

**Observed band size:** 75 kDa

**Exposure time:** 1 minute

Blocking and diluting buffer was 5% NFDM /TBST



Immunoprecipitation - Anti-HTF9C/TRMT2A antibody [EPR16485-54] (ab205616)

HTF9C/TRMT2A was immunoprecipitated from 1mg of HEK293 (Human epithelial cell line from embryonic kidney) whole cell extract with ab205616 at 1/100.

Western blot was performed from the immunoprecipitate using ab205616 at 1/5000 followed by VeriBlot for IP Detection Reagent (HRP) (**ab131366**) at 1/10000.

Lane 1: HEK293 whole cell extract at 10ug

Lane 2: HEK293 whole cell extract immunoprecipitated using ab205616

Lane 3: HEK293 whole cell extract immunoprecipitated using **ab172730** (Rabbit monoclonal IgG)

Blocking and dilution buffer and concentration: 5% NFD/MTBST.

### Why choose a recombinant antibody?



**Research with confidence**  
Consistent and reproducible results



**Long-term and scalable supply**  
Recombinant technology



**Success from the first experiment**  
Confirmed specificity



**Ethical standards compliant**  
Animal-free production

Anti-HTF9C/TRMT2A antibody [EPR16485-54] (ab205616)

**Please note:** All products are "FOR RESEARCH USE ONLY. NOT FOR USE IN DIAGNOSTIC PROCEDURES"

### Our Abpromise to you: Quality guaranteed and expert technical support

- Replacement or refund for products not performing as stated on the datasheet
- Valid for 12 months from date of delivery
- Response to your inquiry within 24 hours
- We provide support in Chinese, English, French, German, Japanese and Spanish
- Extensive multi-media technical resources to help you
- We investigate all quality concerns to ensure our products perform to the highest standards

If the product does not perform as described on this datasheet, we will offer a refund or replacement. For full details of the Abpromise, please visit <https://www.abcam.com/abpromise> or contact our technical team.

## Terms and conditions

---

- Guarantee only valid for products bought direct from Abcam or one of our authorized distributors