

Product datasheet

Anti-Human IgA antibody [RM128] ab193189

Recombinant

[2 References](#) [6 Images](#)

Overview

Product name	Anti-Human IgA antibody [RM128]
Description	Rabbit monoclonal [RM128] to Human IgA
Host species	Rabbit
Specificity	ab193189 reacts with Human IgA, including both IgA1 and IgA2. No cross reactivity with Human IgG, IgM, IgD, or IgE.
Tested applications	Suitable for: ELISA, IHC-P, Sandwich ELISA
Species reactivity	Reacts with: Human
Immunogen	Full length protein corresponding to Human IgA.

Properties

Form	Liquid
Storage instructions	Shipped at 4°C. Store at +4°C short term (1-2 weeks). Upon delivery aliquot. Store at -20°C long term. Avoid freeze / thaw cycle.
Storage buffer	Preservative: 0.09% Sodium azide Constituents: 1% BSA, 48% PBS, 50% Glycerol (glycerin, glycerine)
Purity	Protein A purified
Purification notes	Purified from an animal origin-free culture supernatant.
Clonality	Monoclonal
Clone number	RM128
Isotype	IgG

Applications

The Abpromise guarantee Our **Abpromise guarantee** covers the use of ab193189 in the following tested applications. The application notes include recommended starting dilutions; optimal dilutions/concentrations should be determined by the end user.

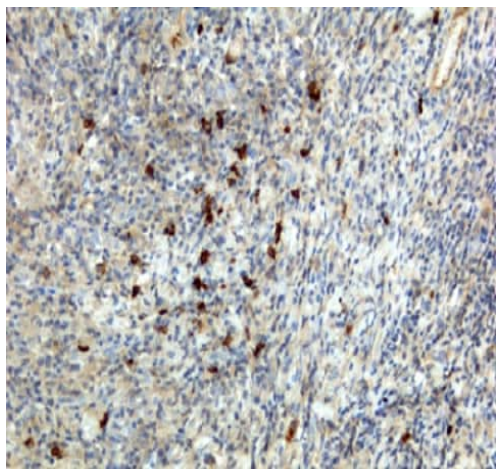
Application	Abreviews	Notes
ELISA		Use a concentration of 10 - 200 µg/ml.
IHC-P		Use a concentration of 0.5 - 2 µg/ml.
Sandwich ELISA		Use a concentration of 0.05 - 0.2 µg/ml.

Target

Relevance Ig alpha is the major immunoglobulin class in body secretions. It may serve both to defend against local infection and to prevent access of foreign antigens to the general immunologic system.

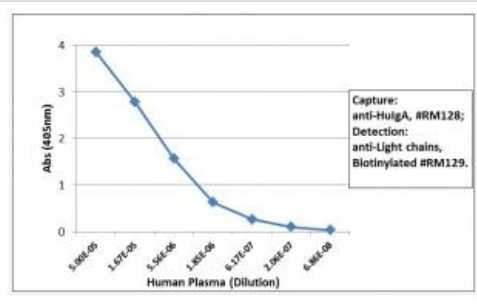
Cellular localization Secreted

Images



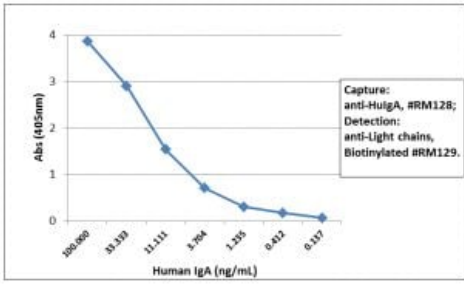
Immunohistochemical analysis of human lymphoid tissue labelling IgA with ab193189 at 0.1 - 1 µg/mL.

Immunohistochemistry (Formalin/PFA-fixed paraffin-embedded sections) - Anti-Human IgA antibody [RM128] (ab193189)



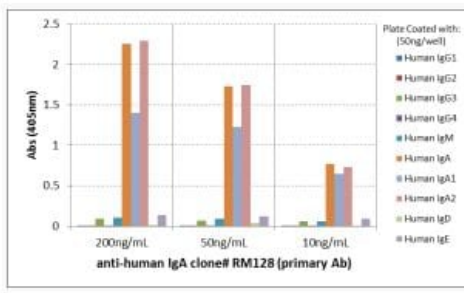
Sandwich ELISA of Human IgA using ab193189 as the capture antibody (100ng/well), and Biotinylated anti-human light chains (κ+λ) antibody as the detection antibody, followed by an alkaline phosphatase conjugated streptavidin.

Sandwich ELISA - Anti-Human IgA antibody [RM128] (ab193189)



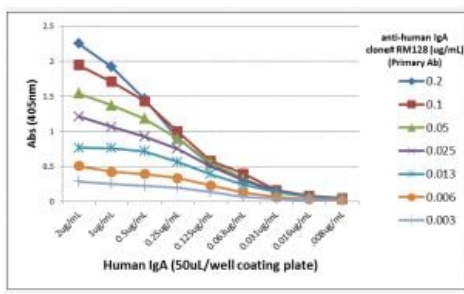
Sandwich ELISA - Anti-Human IgA antibody [RM128] (ab193189)

Sandwich ELISA of Human IgA using ab193189 as the capture antibody (100ng/well), and Biotinylated anti-human light chains (κ + λ) antibody as the detection antibody, followed by an alkaline phosphatase conjugated streptavidin.



ELISA - Anti-Human IgA antibody [RM128] (ab193189)





ELISA analysis of Human immunoglobulins coated at 50 ng/well. ab193189 at 200 ng/mL, 50 ng/mL, or 10 ng/mL was used as the primary antibody and alkaline phosphatase conjugated anti-rabbit IgG as the secondary antibody. the results shows taht ab193189 reacted to both Human IgA1 & IgA2. There was no cross reactivity with Human IgG, IgM, IgD, or IgE.



ELISA - Anti-Human IgA antibody [RM128] (ab193189)

ELISA analysis of different amounts of Human IgA detected using a serial dilution of ab193189 as the primary antibody. An alkaline phosphatase conjugated anti-rabbit IgG was used as the secondary antibody.

Why choose a recombinant antibody?

 <p>Research with confidence Consistent and reproducible results</p>	 <p>Long-term and scalable supply Recombinant technology</p>
 <p>Success from the first experiment Confirmed specificity</p>	 <p>Ethical standards compliant Animal-free production</p>

Anti-Human IgA antibody [RM128] (ab193189)

Please note: All products are "FOR RESEARCH USE ONLY. NOT FOR USE IN DIAGNOSTIC PROCEDURES"

Our Abpromise to you: Quality guaranteed and expert technical support

- Replacement or refund for products not performing as stated on the datasheet
- Valid for 12 months from date of delivery
- Response to your inquiry within 24 hours
- We provide support in Chinese, English, French, German, Japanese and Spanish
- Extensive multi-media technical resources to help you
- We investigate all quality concerns to ensure our products perform to the highest standards

If the product does not perform as described on this datasheet, we will offer a refund or replacement. For full details of the Abpromise, please visit <https://www.abcam.com/abpromise> or contact our technical team.

Terms and conditions

- Guarantee only valid for products bought direct from Abcam or one of our authorized distributors