

Product datasheet

Anti-Human IgG antibody [EPR12700] ab181236

Recombinant **RabMAb**

[13 References](#) [8 Images](#)

Overview

Product name	Anti-Human IgG antibody [EPR12700]
Description	Rabbit monoclonal [EPR12700] to Human IgG
Host species	Rabbit
Tested applications	Suitable for: IHC-P, WB, ELISA
Species reactivity	Reacts with: Human
Immunogen	Full length native protein (purified) corresponding to Human Human IgG. Isolated from a pool of normal Human sera.
Positive control	Human plasma, thymus, spleen and tonsil tissue lysates; Human IgG; Human spleen and colon tissues.
General notes	<p>This product is a recombinant monoclonal antibody, which offers several advantages including:</p> <ul style="list-style-type: none"> - High batch-to-batch consistency and reproducibility - Improved sensitivity and specificity - Long-term security of supply - Animal-free production <p>For more information see here.</p> <p>Our RabMAb[®] technology is a patented hybridoma-based technology for making rabbit monoclonal antibodies. For details on our patents, please refer to RabMAb[®] patents.</p>

Properties

Form	Liquid
Storage instructions	Shipped at 4°C. Store at +4°C short term (1-2 weeks). Upon delivery aliquot. Store at -20°C long term. Avoid freeze / thaw cycle.
Storage buffer	Preservative: 0.01% Sodium azide Constituents: 59% PBS, 40% Glycerol (glycerin, glycerine), 0.05% BSA
Purity	Protein A purified
Clonality	Monoclonal
Clone number	EPR12700
Isotype	IgG

Applications

The Abpromise guarantee

Our [Abpromise guarantee](#) covers the use of ab181236 in the following tested applications.

The application notes include recommended starting dilutions; optimal dilutions/concentrations should be determined by the end user.

Application	Abreviews	Notes
IHC-P		1/100 - 1/250. Perform heat mediated antigen retrieval with Tris/EDTA buffer pH 9.0 before commencing with IHC staining protocol. See IHC antigen retrieval protocols .
WB		1/1000 - 1/10000. Detects a band of approximately 52-58 kDa (predicted molecular weight: 36, 41 kDa).
ELISA		Use at an assay dependent concentration. Please look at the product page for ab201842 for information on how this clone performs in an ELISA.

Target

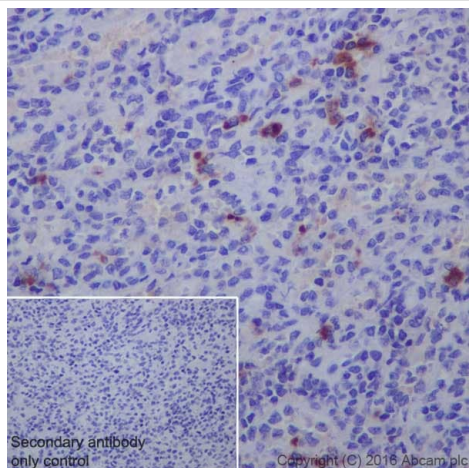
Relevance

IgG is a monomeric immunoglobulin, built of two heavy chains gamma and two light chains. Each molecule has two antigen binding sites. This is the most abundant immunoglobulin and is approximately equally distributed in blood and in tissue liquids, constituting 75% of serum immunoglobulins in humans. This is the only isotype that can pass through the human placenta, thereby providing protection to the fetus in its first weeks of life before its own immune system has developed. It can bind to many kinds of pathogens, for example viruses, bacteria, and fungi, and protects the body against them by complement activation (classic pathway), opsonization for phagocytosis and neutralisation of their toxins. There are 4 subclasses: IgG1 (66%), IgG2 (23%), IgG3 (7%) and IgG4 (4%).

Cellular localization

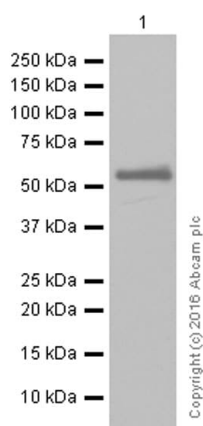
Cell Membrane and Secreted

Images



Immunohistochemistry (Formalin/PFA-fixed paraffin-embedded sections) analysis of human spleen tissue sections labeling Human IgG with purified ab181236 at 1/100 dilution (1.3 µg/ml). Heat mediated antigen retrieval was performed using EDTA Buffer, PH9. Tissue was counterstained with Hematoxylin. **ab97051** Goat Anti-Rabbit IgG H&L (HRP) secondary antibody was used at 1/500 dilution. PBS instead of the primary antibody was used as the negative control.

Immunohistochemistry (Formalin/PFA-fixed paraffin-embedded sections) - Anti-Human IgG antibody [EPR12700] (ab181236)



Anti-Human IgG antibody [EPR12700] (ab181236) at 1/10000 dilution (purified) + Human tonsil lysate at 20 µg

Secondary

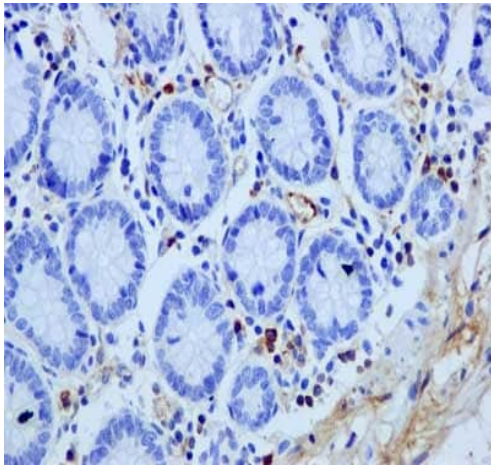
Anti-Rabbit IgG (HRP), specific to the non-reduced form of IgG at 1/10000 dilution

Predicted band size: 36, 41 kDa

Observed band size: 52 kDa

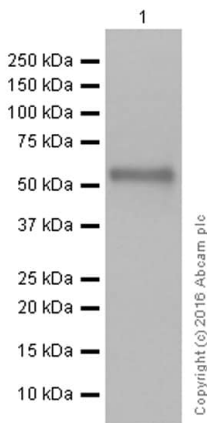
Western blot - Anti-Human IgG antibody [EPR12700] (ab181236)

Blocking and diluting buffer: 5% NFDM/TBST.



Immunohistochemistry (Formalin/PFA-fixed paraffin-embedded sections) - Anti-Human IgG antibody [EPR12700] (ab181236)

Immunohistochemical analysis of paraffin-embedded Human colon tissue labeling Human IgG with unpurified ab181236 at 1/250 dilution, dilution followed by pre-diluted HRP-conjugated secondary antibody and counter-stained with Hematoxylin.



Western blot - Anti-Human IgG antibody [EPR12700] (ab181236)

Anti-Human IgG antibody [EPR12700] (ab181236) at 1/2000 dilution (purified) + Human spleen tissue lysate at 20 µg

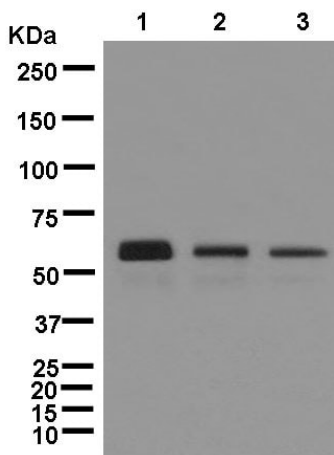
Secondary

Anti-Rabbit IgG (HRP), specific to the non-reduced form of IgG at 1/2000 dilution

Predicted band size: 36, 41 kDa

Observed band size: 52 kDa

Blocking and diluting buffer: 5% NFDM/TBST.



Western blot - Anti-Human IgG antibody [EPR12700] (ab181236)

All lanes : Anti-Human IgG antibody [EPR12700] (ab181236) at 1/10000 dilution (unpurified)

Lane 1 : Human plasma lysate

Lane 2 : Human thymus lysate

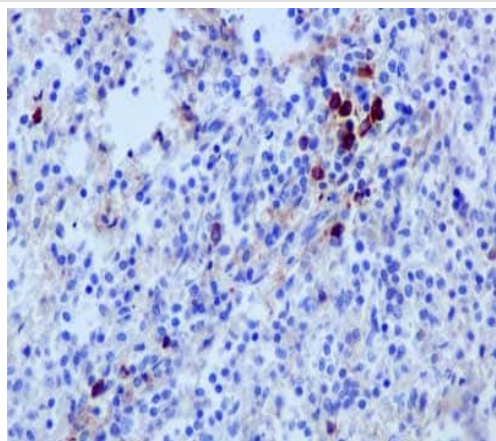
Lane 3 : Human tonsil lysate

Lysates/proteins at 10 µg per lane.

Secondary

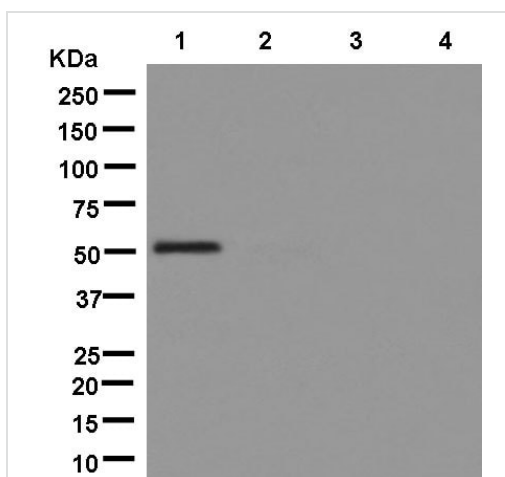
All lanes : Anti-Rabbit IgG (HRP), specific to the non-reduced form of IgG at 1/1000 dilution

Predicted band size: 36, 41 kDa



Immunohistochemistry (Formalin/PFA-fixed paraffin-embedded sections) - Anti-Human IgG antibody [EPR12700] (ab181236)

Immunohistochemical analysis of paraffin-embedded Human spleen tissue labeling Human IgG with unpurified ab181236 at 1/250 dilution, dilution followed by pre-diluted HRP-conjugated secondary antibody and counter-stained with Hematoxylin.



Western blot - Anti-Human IgG antibody [EPR12700] (ab181236)

All lanes : Anti-Human IgG antibody [EPR12700] (ab181236) at 1/2000 dilution (unpurified)

Lane 1 : Human IgG

Lane 2 : Human IgM

Lane 3 : Human IgA

Lane 4 : Human IgD

Lysates/proteins at 0.01 µg per lane.

Secondary

All lanes : Goat Anti-Rabbit IgG, (H+L), Peroxidase conjugated at 1/1000 dilution

Predicted band size: 36, 41 kDa

Why choose a recombinant antibody?



Research with confidence
Consistent and reproducible results



Long-term and scalable supply
Recombinant technology



Success from the first experiment
Confirmed specificity



Ethical standards compliant
Animal-free production

Anti-Human IgG antibody [EPR12700] (ab181236)

Please note: All products are "FOR RESEARCH USE ONLY. NOT FOR USE IN DIAGNOSTIC PROCEDURES"

Our Abpromise to you: Quality guaranteed and expert technical support

- Replacement or refund for products not performing as stated on the datasheet
- Valid for 12 months from date of delivery
- Response to your inquiry within 24 hours
- We provide support in Chinese, English, French, German, Japanese and Spanish
- Extensive multi-media technical resources to help you
- We investigate all quality concerns to ensure our products perform to the highest standards

If the product does not perform as described on this datasheet, we will offer a refund or replacement. For full details of the Abpromise, please visit <https://www.abcam.com/abpromise> or contact our technical team.

Terms and conditions

- Guarantee only valid for products bought direct from Abcam or one of our authorized distributors